

MAP OF

RAYMOND J. MACGEE TRACT.
Section 22 - Tp. 27S - Rg. 4W. WM.
Scale - 1" = 50'

COUNTY SURVEYORS FILE DATA
DO NOT REMOVE FROM OFFICE

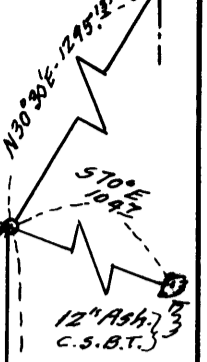
FILED
RECEIVED

JUN 1919

COUNTY SURVEYOR
DOUGLAS COUNTY, OREG.



1/4 Cor. Sec 15/22
Tp. 27S Rg. 4W WM



562°56'W-102.04'
Auto Axle

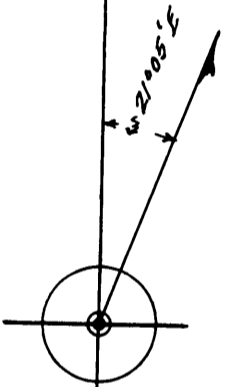
Road

559°37'W-210.43'

COUNTY

589°44'W-91.11'
581°01'W-97.73'

N



434.80
South

5.00 ACRES.

170°09'W
607.41'

East
461.47'

CS FILE FOLDER

CONTAINS

MORE

INFORMATION