

APPROVED

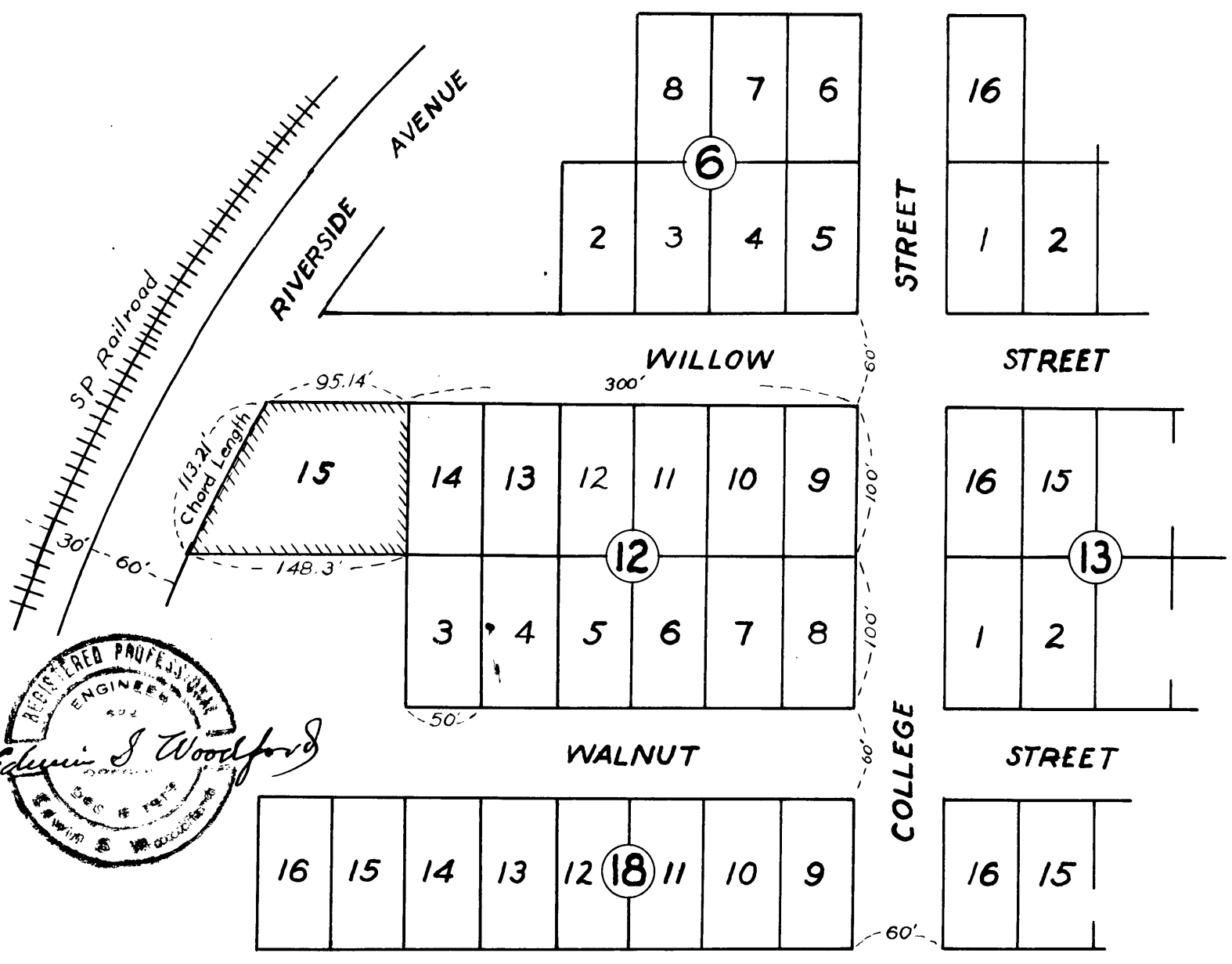
COUNTY SURVEYORS FILE DATA
DO NOT REMOVE FROM OFFICE

MAINE

MAP

SHOWING PORTION
of
RIVERSIDE ADDITION TO ROSEBURG
Block 12, Sec. 13, Twp. 27S, Rg. 6W

SCALE = 100' to 1"



REGISTERED PROFESSIONAL ENGINEER
Edwin J. Woodford
1922
MAINE

