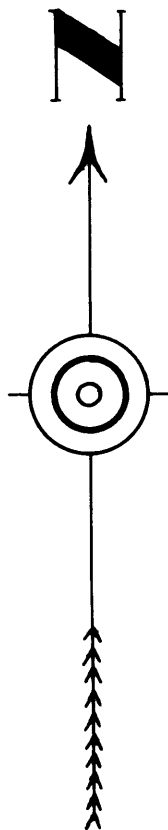
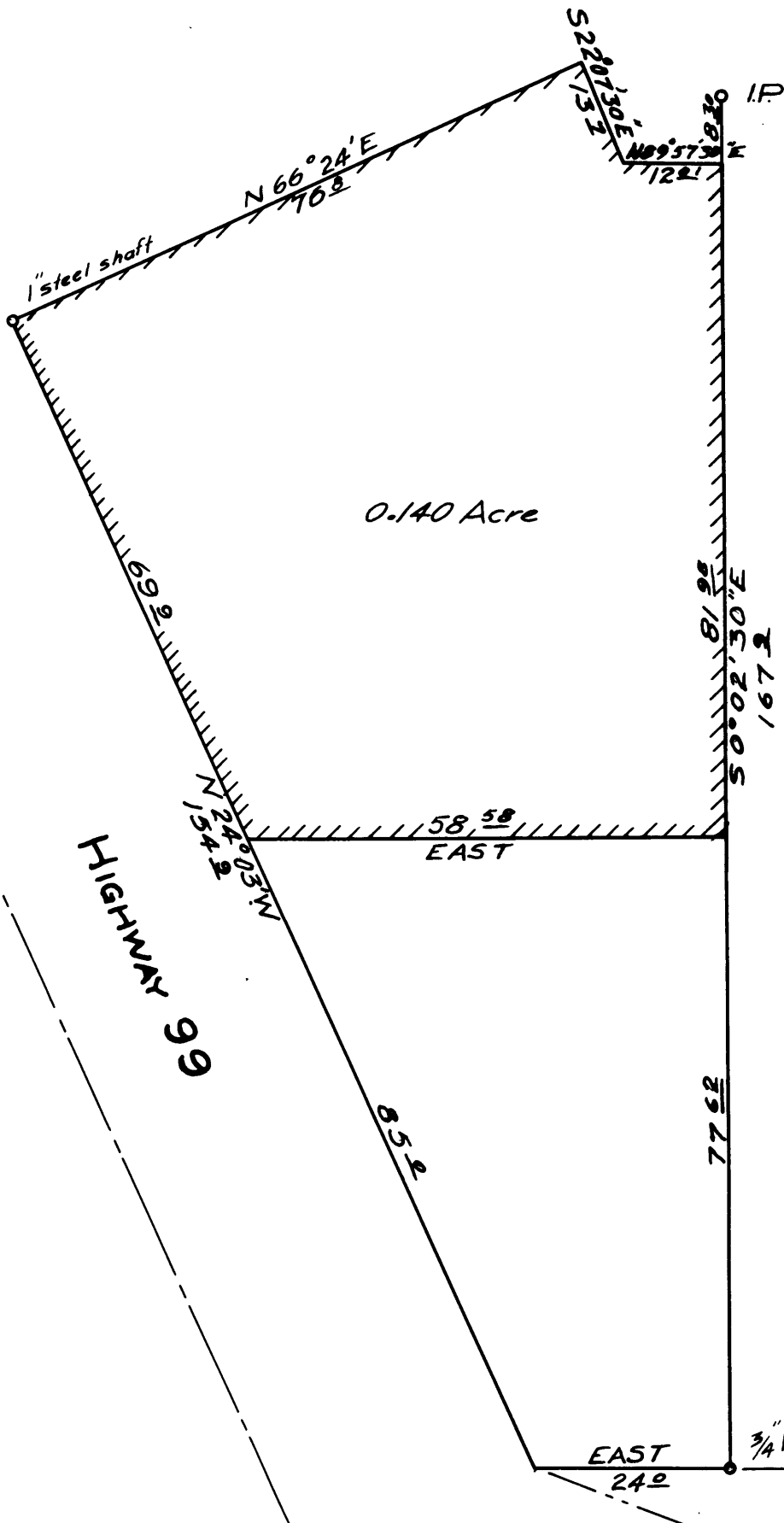


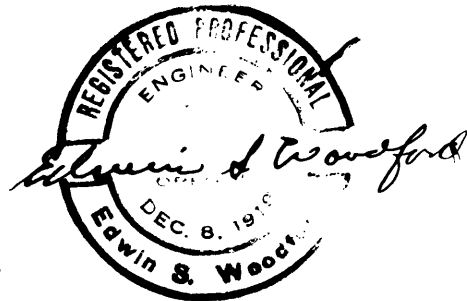
FILED
RECEIVED

JUL

COUNTY SURVEYOR
DOUGLAS COUNTY, OR.



Scale: 1-inch = 20 ft.



STEARNS
A PORTION OF
LOT 14

FRUITVALE ADDITION TO ROSEBURG, OREGON

SEC. 13 - TWP. 27 S - R. 5 W. W.M.

COUNTY SURVEYORS FILE DATA
DO NOT REMOVE FROM OFFICE

STEARNS

CS FILE FOLDER

CONTAINS

MORE

INFORMATION