

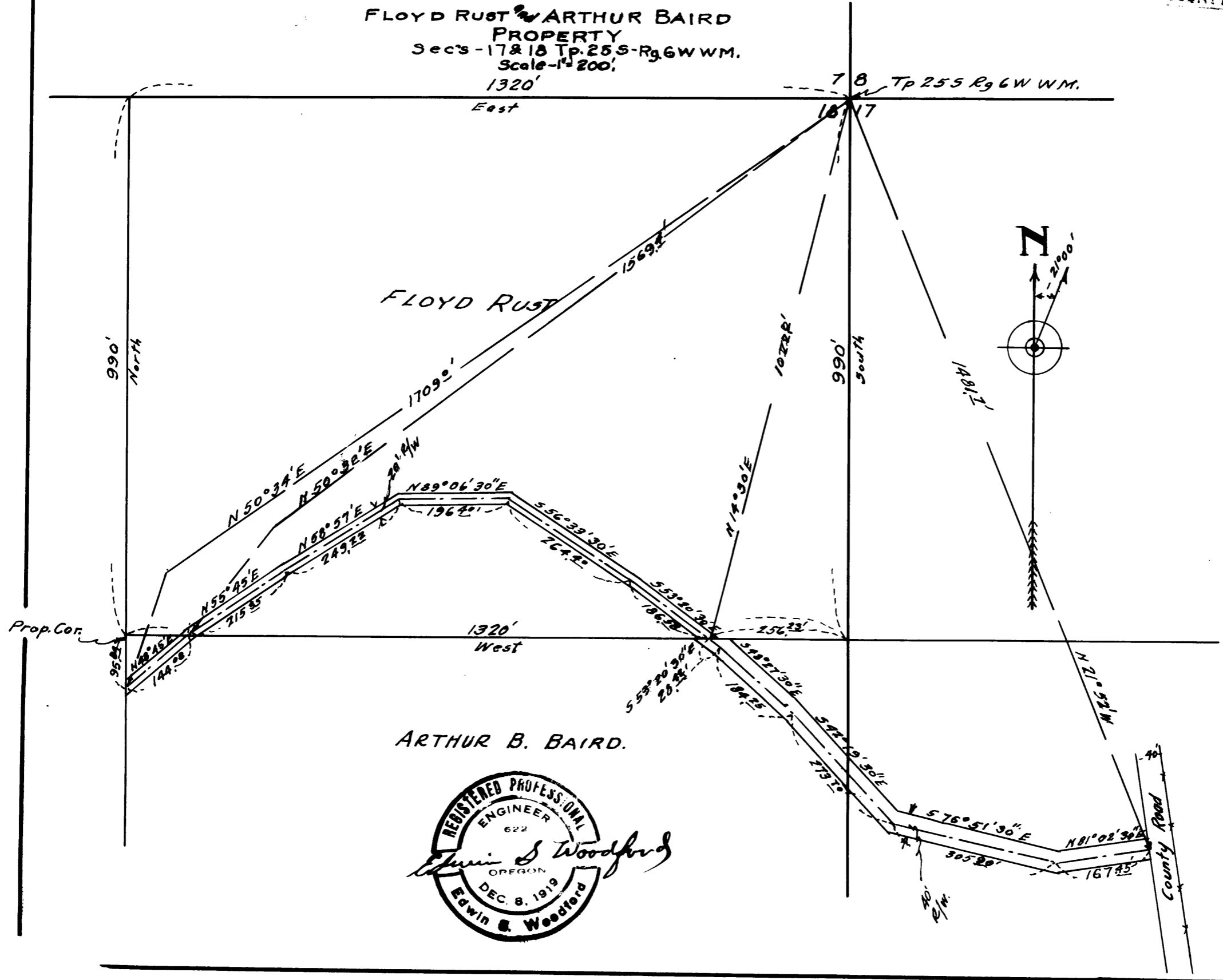
COUNTY SURVEYORS FILE DATA
DO NOT REMOVE FROM OFFICE

FILED
RECEIVED

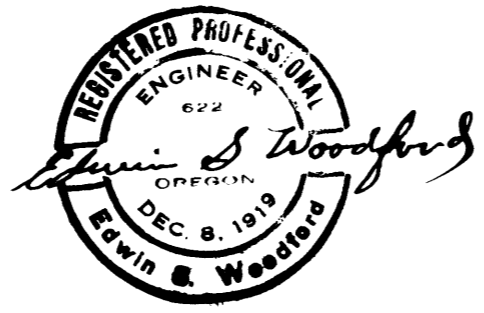
JUN 2 1961

COUNTY SURVEYOR
DOUGLAS COUNTY, ORE.

MAP
OF
RIGHT OF WAY
THRU
FLOYD RUST & ARTHUR BAIRD
PROPERTY
Sec's - 17 & 18 Tp. 25 S - R. 6 W W.M.
Scale - 1" = 200'



ARTHUR B. BAIRD.



-01-

CS FILE FOLDER

CONTAINS

MORE

INFORMATION