

KARLINGER

MAP SHOWING PORTION OF

LOTS - 156 and 157

TRACT - 1. PLAT - 1.

ROSEBURG ORCHARD COMPANY.

Sec. 6 - Tp. 27S - Rg. 5 W. WM.

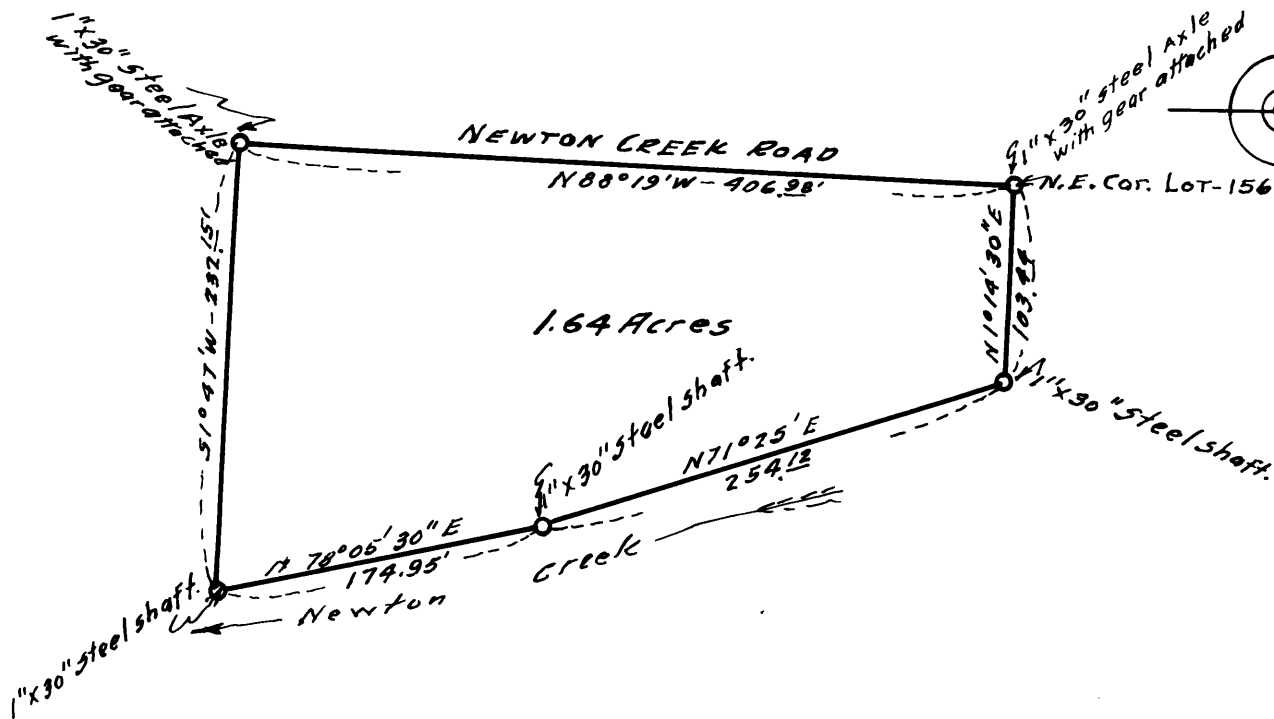
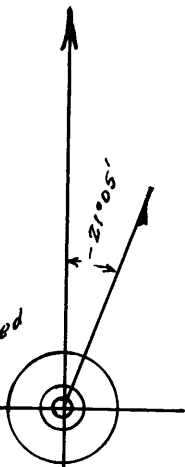
Scale - 1" = 100'

FILED
RECEIVED

JUL 1919

COUNTY SURVEYOR
WILLIAM COUNTY, ORE.

N



1.64 Acres

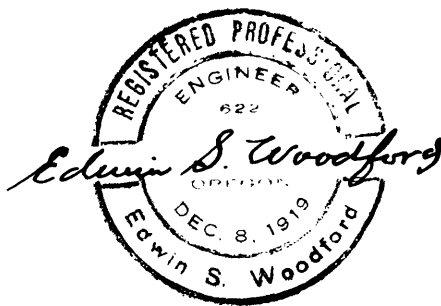
1\"/>

N 71° 25' E
254.12

N 78° 05' 30\"/>

174.95'

Newton Creek



COUNTY SURVEYORS FILE DATA
DO NOT REMOVE FROM OFFICE

CS FILE FOLDER

CONTAINS

MORE

INFORMATION