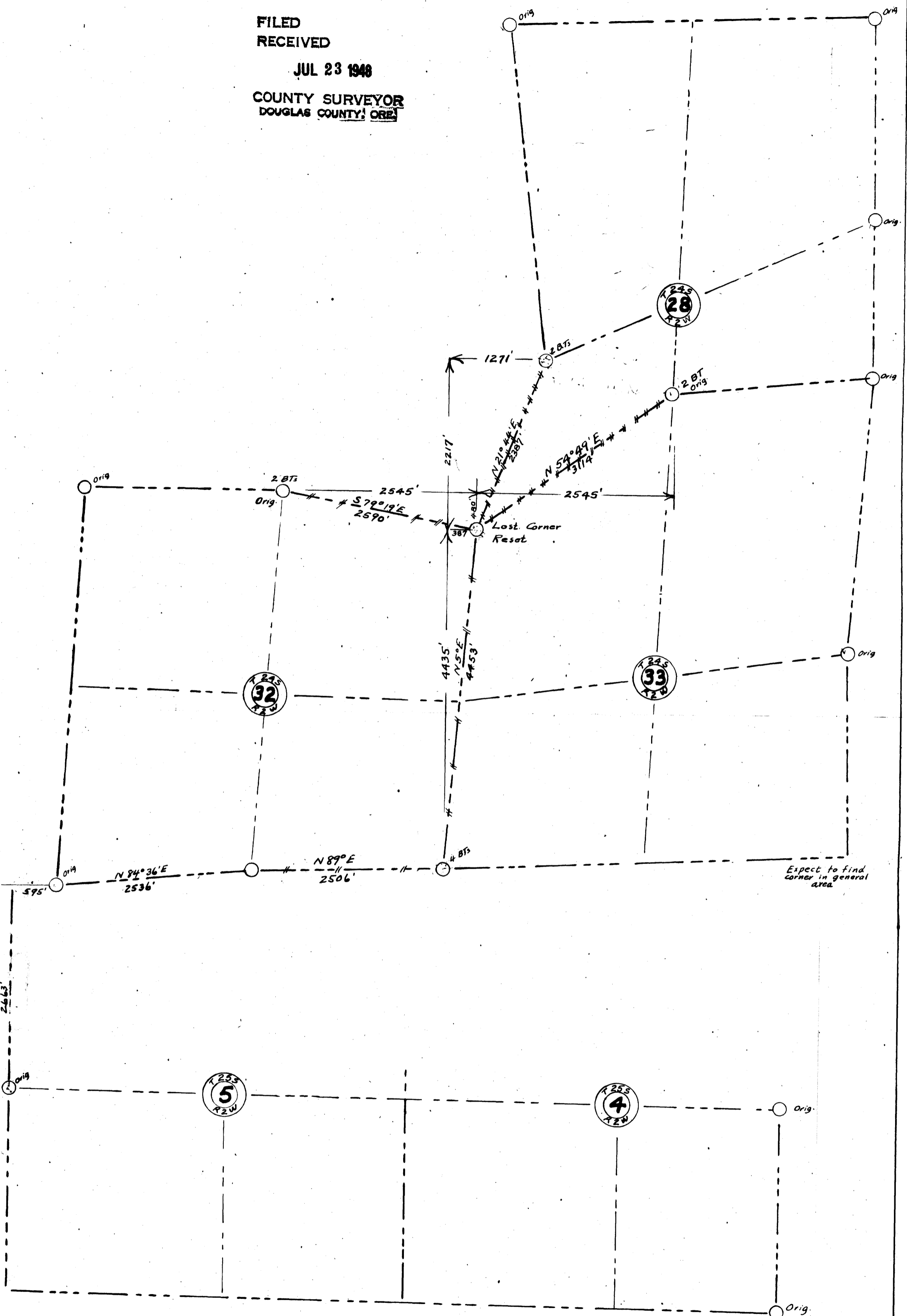


FILED  
 RECEIVED  
 JUL 23 1946  
 COUNTY SURVEYOR  
 DOUGLAS COUNTY, ORE.



Reestablishment Sec. Con  $\frac{29}{32} \frac{28}{33}$  T 24S-2W  
 by  
 Fred McCormack  
 Rock Island Lumber Co.  
 DEC. 1946

SCALE 1" = 1000' DECL. 20°

COUNTY SURVEYORS FILE DATA  
 DO NOT REMOVE FROM OFFICE

WEYERHAEUSER TIMBER COMPANY

Section 26 Township 24 S Range 2 W W.M.


SEE PLAT  
ATTACHED

FILED  
RECEIVED

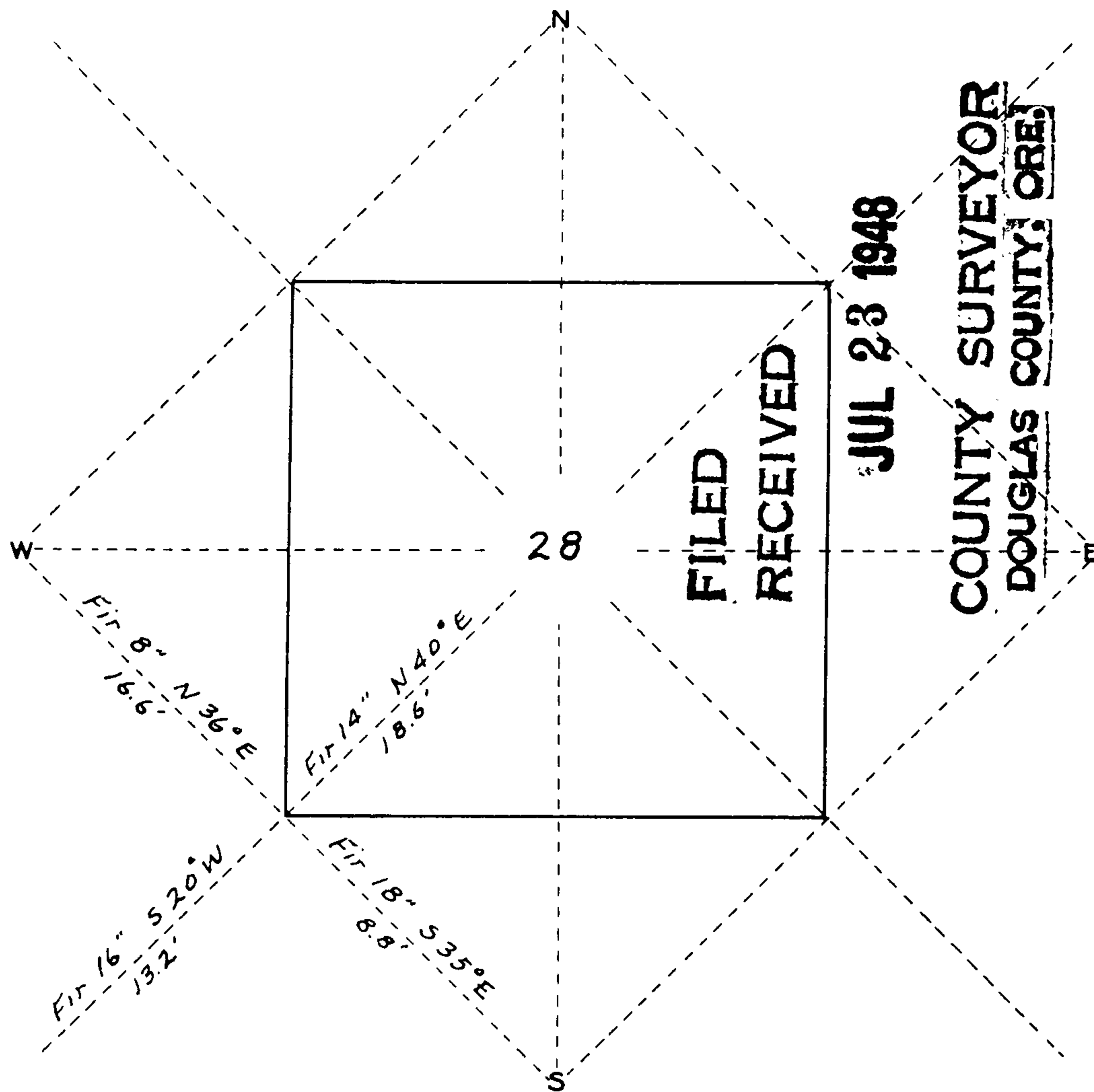
JUL 23 1948

COUNTY SURVEYOR  
DOUGLAS COUNTY, ORE.

The point for the SW corner of Sec 28, T24S, R2W was re-established by double proportionate measurement from field work of Fred McCornack of the Rock Island Lumber Co. assisted by employees of W.T.Co. and directed by Lester Calder. This point was referenced by 4 trees, each with aluminum plate, inscribed brass disk and "W" nail. From this re-established SW corner, random and blazed true lines were run to the W<sup>1</sup>/<sub>4</sub> and S<sup>1</sup>/<sub>4</sub> corners.

Examined June 8 1948  
By Lester Calder

Sec. 28 Twp. 24 S Range 2 W W.M.  
WEYERHAEUSER TIMBER CO.



FILED  
RECEIVED

JUL 23 1948

COUNTY SURVEYOR  
DOUGLAS COUNTY, ORE.

COR.	IDENTIFIED BY			WITNESSED BY		DATE	BY WHOM
	BT'S	POST	STONE	PIPE	TAG		
NE							
N $\frac{1}{4}$							
NW							
W $\frac{1}{4}$							
SW				Post	4	6/8/48	K. H. Bergeson
S $\frac{1}{4}$							
SE							
E $\frac{1}{4}$							

FIELD RECORD FOR OFFICE DATA

SW corner re-established by double proportionate measurement. Field work by F. McCornack. Plat by L. E. Calder. Witness trees identified by brass disks fixed with "W" nails and inscribed with Ore. Reg. Eng. License No. 2149 issued to L. E. Calder.

WITNESSED BY Fred McCornack + H. J. Carrels.

C. S. File No. 40110