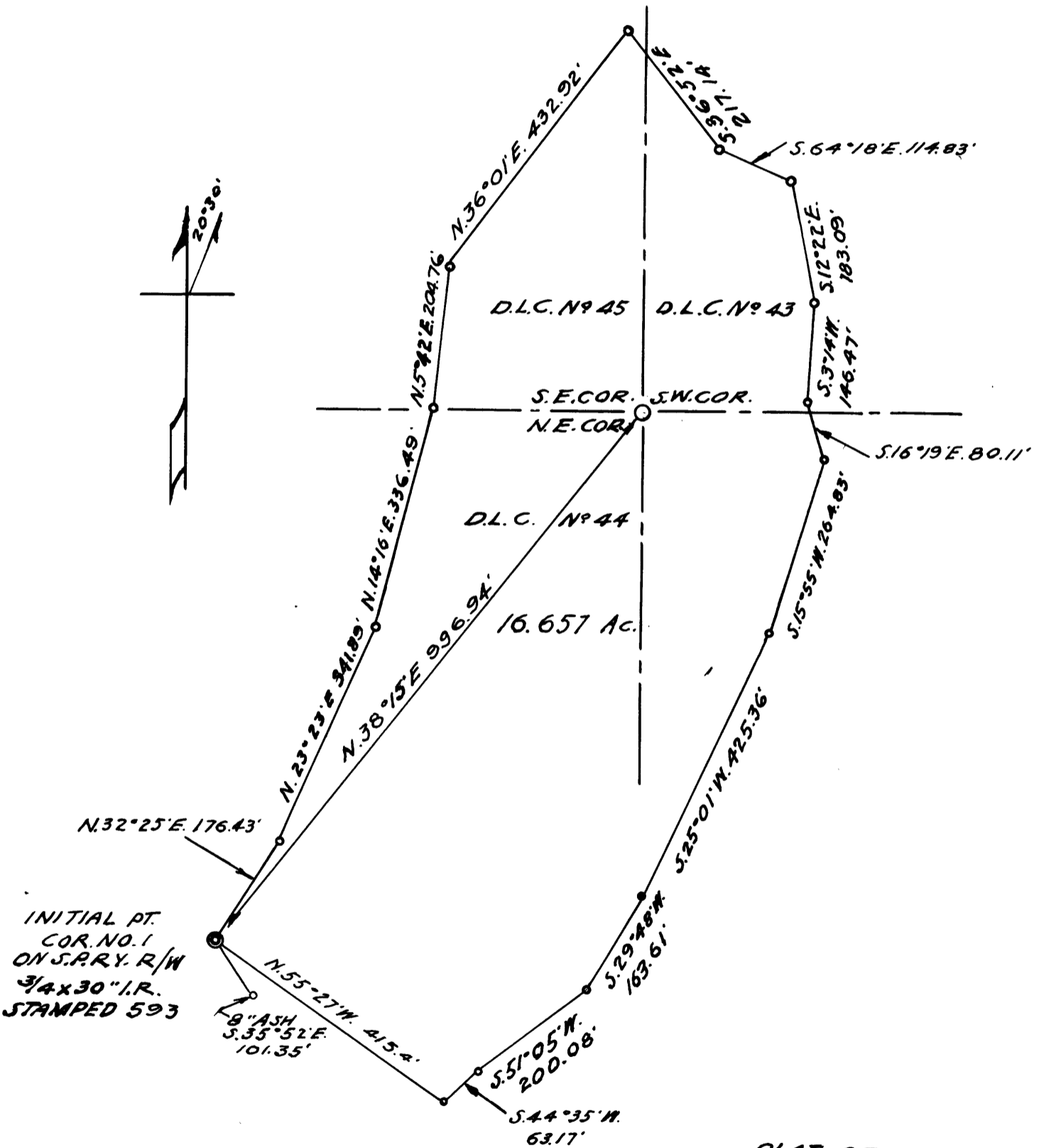


NOTE:
 D.L.C. COR. FOUND, 14" BELOW SURFACE.
 FROM INIT. PT. A NAIL IN 8" ASH BEARS S.35°52'E
 101.35 FT.; TREE SCRIBED W.L. CO. B.T. BEARINGS ARE
 REFERRED TO BEARING OF S.P.R.Y. TANGENT SOUTH
 OF WILBUR AS SHOWN IN DEED PARKER TO LEE-
 RECORDED P. 373, VOL. 3 OF DEEDS, DOUGLAS
 COUNTY, OREGON.



INITIAL PT.
 COR. NO. 1
 ON S.P.R.Y. R/W
 3/4 x 30" I.R.
 STAMPED 593

8" ASH
 S.35°52'E.
 101.35'

SURVEYED 4-22 TO 4-27, '48
 UNDER SUPERVISION OF

J. H. [Signature]

PLAT OF
WILBUR LUMBER CO.
TRACT IN SEC. 7, T.26S, R.5W, W.M.
DOUGLAS COUNTY, ORE.
 SCALE 1" = 200 FT.

COUNTY SURVEYORS FILE DATA
 DO NOT REMOVE FROM OFFICE

CS FILE FOLDER

CONTAINS

MORE

INFORMATION