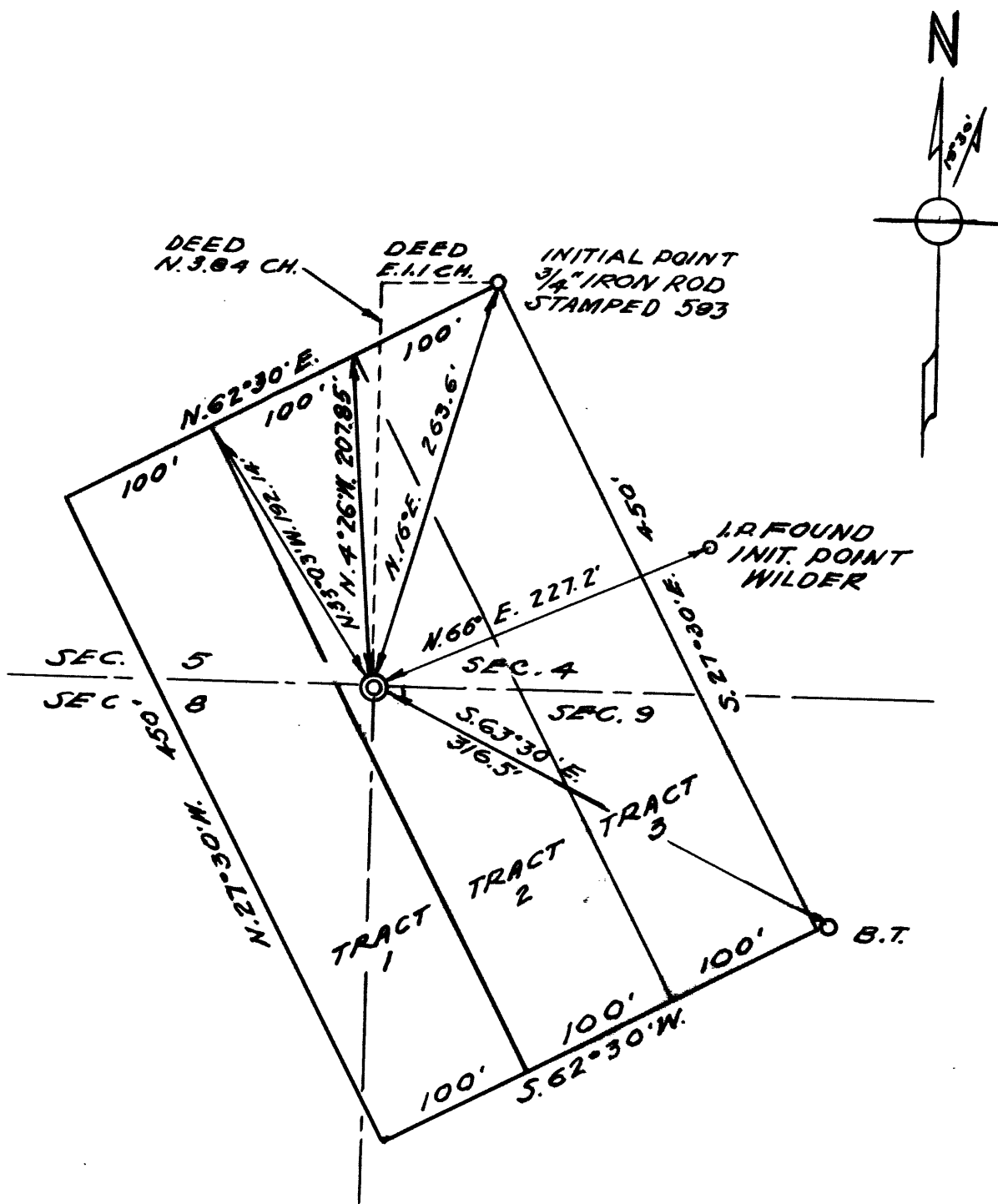


COUNTY SURVEYORS FILE DATA
DO NOT REMOVE FROM OFFICE

p FILE 100 DRAWER 40



NOTE: AN IRON
ROD IS SET AT
EVERY CORNER.

SEC. COR. IS 6" DIA.
CONCRETE BLK. SET IN
GROUND, WITH BOLT
FOR CENTER. APPAR-
ENTLY RECENTLY SET.
BEARING TREE & TIE
TO WILDER INIT. PT. AGREE
WITH RESPECTIVE DES-
CRPTIONS.

FILED
RECEIVED

APR 29 1948

COUNTY SURVEYOR

PLAT OF ALICE DOYLE'S
THREE ONE-ACRE TRACTS
IN SECS. 4-5-8-9, T.25 S.R.5W.W.M.
DOUGLAS COUNTY, OREGON
-SCALE 1 IN. = 100 FT.-

SURVEYED APR. 14, 1948.

J. W. Elmer
REGISTERED PROF. ENGINEER.