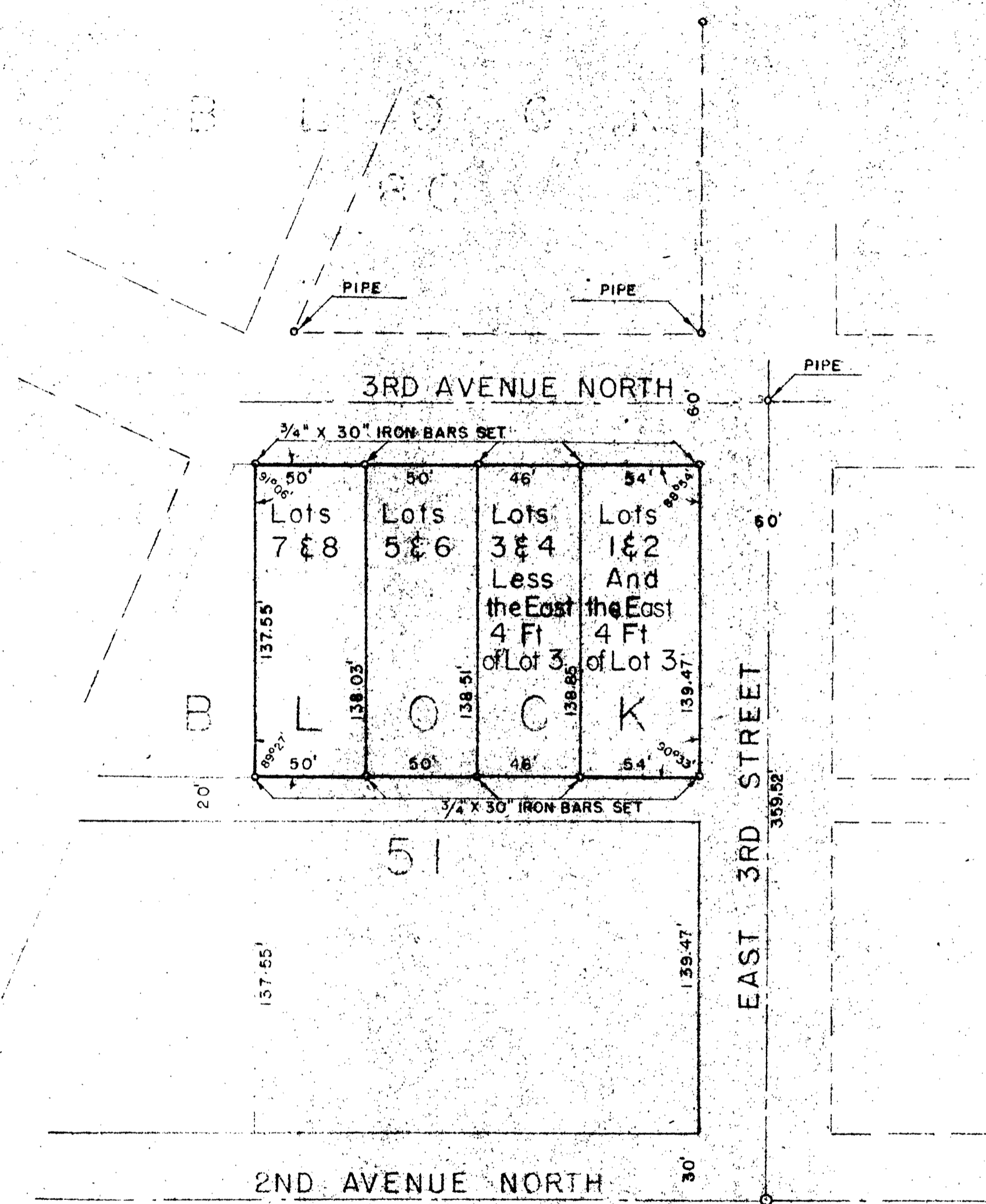


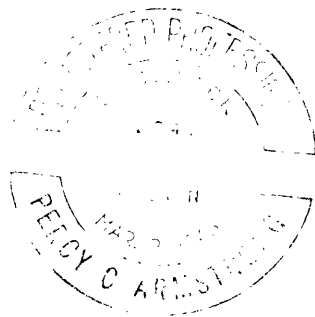
COUNTY SURVEYORS FILE DATA  
DO NOT REMOVE FROM OFFICE



A PLAT OF  
PART of BLOCK 51  
KINNEY'S IMPROVED PLAT IN  
Roseburg, Douglas Co.  
Oregon.  
Scale 1" = 50'  
Sept. 1947.

Survey of Lots 1 to 8 in Block 51, Kinneys Improved Plat, Roseburg,  
Oregon for Vernon Martin and others  
To establish line and corners

Established center of East Third Street by line between existing monuments. Established center of Third Avenue North by monument at intersection of Third Street North and pipes set on the South line of Block 60 by Gene Richardson. Upon checking the distance across Block 51 in line with the west side of Lot 8, I find it does not agree with the distance shown on the plat. I therefore prorate the difference as shown in accompanying plat and mark the corners of the Lots surveyed as shown.



FILED  
RECEIVED

FEB 20 1948

COUNTY SURVEYOR  
DOUGLAS COUNTY, ORE.