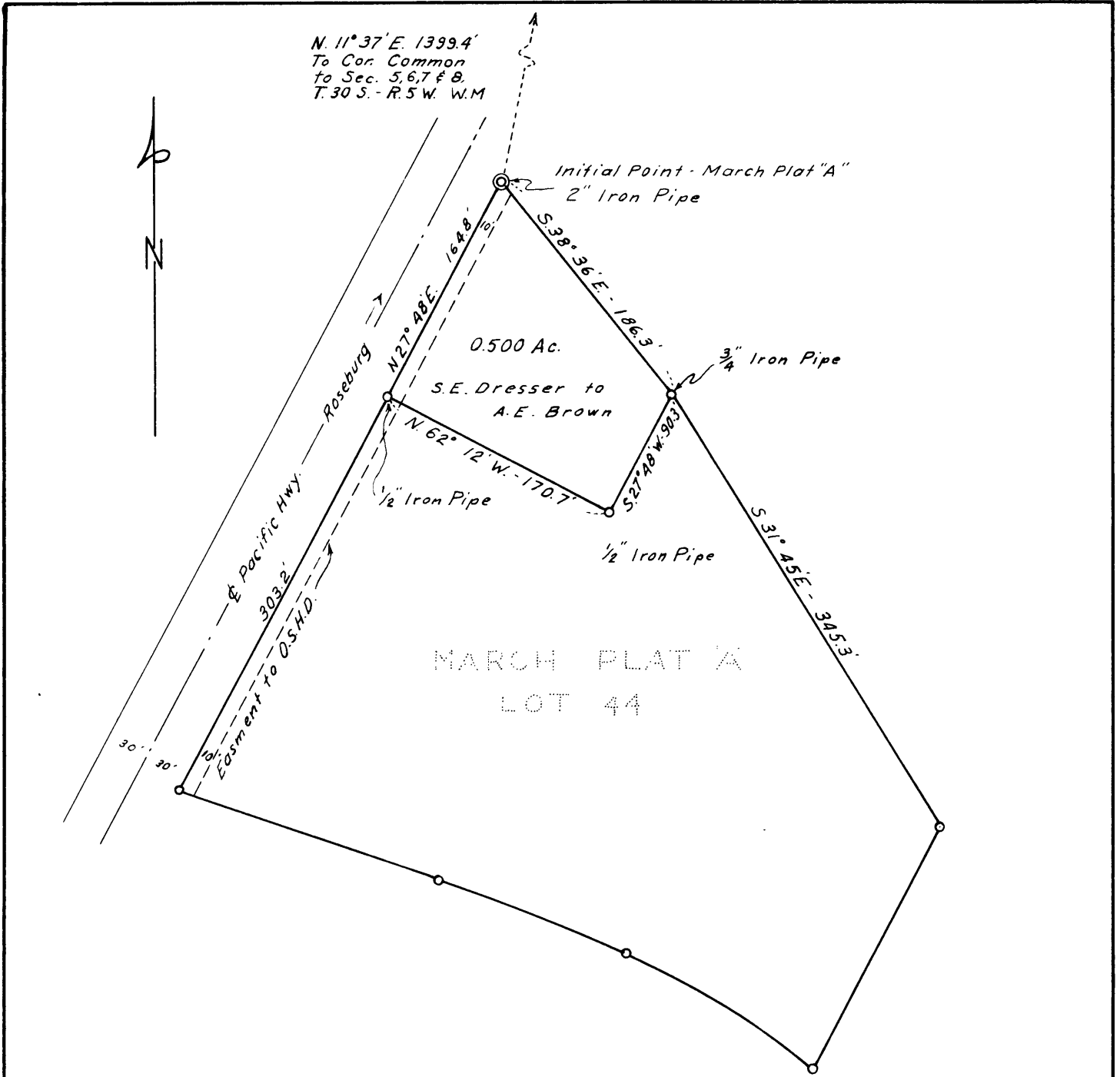


COUNTY SURVEYOR FIELD DATA  
DO NOT REMOVE FROM OFFICE

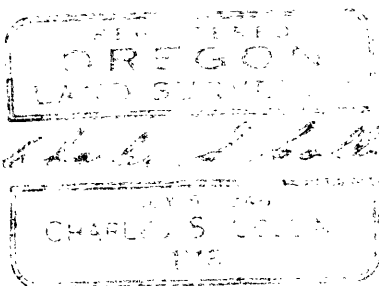


MARCH PLAT 'A'  
LOT 44

FIELD NOTES

I begin at a 2" by 36" iron pipe which is the initial point of March Plat "A"; thence I run S.38° 36' E. 186.3 feet, at which point I find a 3/4 inch iron pipe; thence I run S.27° 48' W. 90.3 feet and set a 1/2 inch iron pipe; thence I run N.62° 12' W. 170.7 feet and set a 1/2 inch iron pipe; thence I run N.27° 48' E. 164.8 feet, parallel to and 30 feet distant from the center line of the Pacific Highway, to the initial point.

*Charles S. Collins*  
Charles S. Collins  
Ore. Reg. Land Surveyor  
No. 176



PART OF  
LOT 44 - MARCH PLAT "A"  
T. 30 S. - R. 5 W. W.M. - DOUGLAS CO. ORE.  
S.E. DRESSER to A.E. BROWN

SURVEY BY: CHARLES S. COLLINS - O.R.L.S. No 176  
JANUARY 19, 1948 SCALE: 1 IN. = 100 FT.