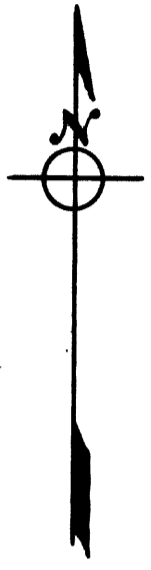


Iron Pin
N.W. Cor. D.L.C. #51



3201.9

1/4 Cor. bet.
Sec. 27-28

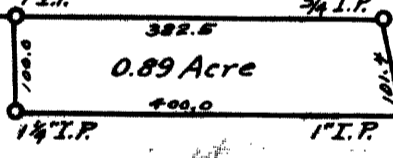
1/2" I.P.
Stone

121.0

East 1287.0

1" I.P.

3/4" I.P.



PACIFIC HWY.
S.E. 1/4

S.E. Cor.
D.L.C. #50

252.0

327.1

Stone

West 1356.9

1/2" I.P.

1/4" Axle Shaft

851.4

County Surveyor's Office
Douglas County, Oregon
C.C. Phillips Property
Section 27 T.30S., R.5W. W.M.
Geo. J. Wenderoth Dep. Co. Surveyor.
Surveyed Dec. 1945 Scale 1"=200'

COUNTY SURVEYORS FILE DATA
DO NOT REMOVE FROM OFFICE

REGISTERED
OREGON
LAND SURVEYOR

Geo. J. Wenderoth

MARCH 10, 1944
George J. Wenderoth
§

S.W. Cor. D.L.C. #51

1/4" I.P.

Deputy County Surveyor

CS FILE FOLDER

CONTAINS

MORE

INFORMATION