

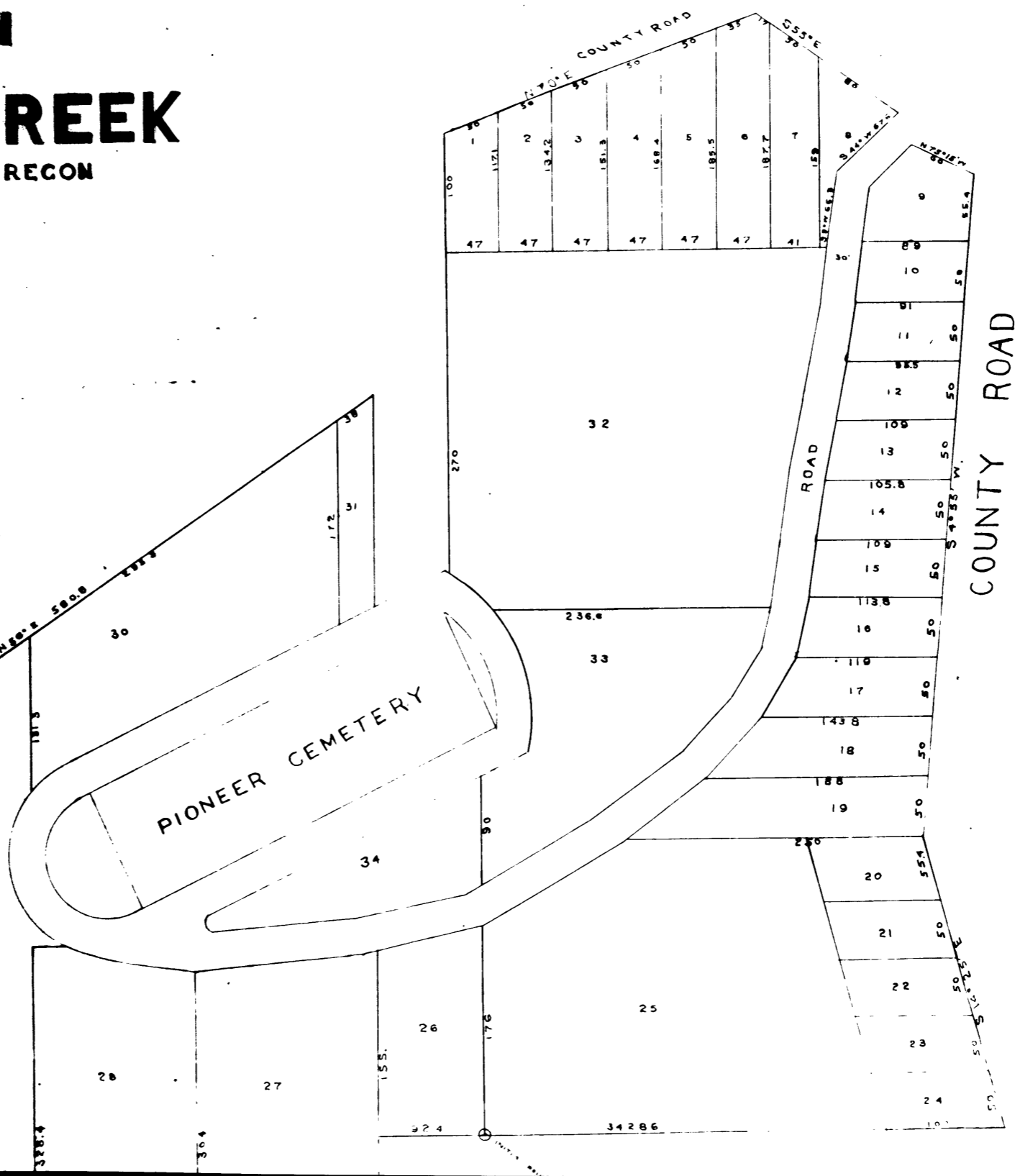
ADDITION

To

MYRTLE CREEK

DOUGLAS CO. OREGON

SCALE  
1" = 100'



APPROV  
APPROV  
APPROV

COUNTY SURVEYORS FILE DATA  
DO NOT REMOVE FROM OFFICE

I Frank Cain being first duly sworn depose and say I have surveyed and marked with proper monuments the lands shown on the annexed plat of which the following is a true and correct description; Beginning at the S.W. cor. of the Lazarus Wright D.L.C. No. 45 in T.P. 29 S R 5 W thence west 92.4, thence South 165, thence west 773.5, thence N 23° E 330, thence N 45° 15' E 231 thence N 56° E 580.8 thence South 172 thence East 66.4 thence north 400 thence N 70° E 285 thence S 55° E 226.4 thence S 40° 55' W 566 thence S 14° 25' E 255.4 thence west 442.86 to the place of beginning Except from the above that piece of land known as the Pioneer Cemetery that the initial point of the above survey is a 2" iron pipe 30" long set 24" in the ground at the SW cor. of the Lazarus Wright D.L.C. 45 in T.P. 29 S R 5 W

FRANK CAIN

Subscribed and Sworn to, before me  
 this 11<sup>th</sup> day of August 1910

MARK RENHARDT

Lots 21-31 incl

See Bob Jones  
for Plat

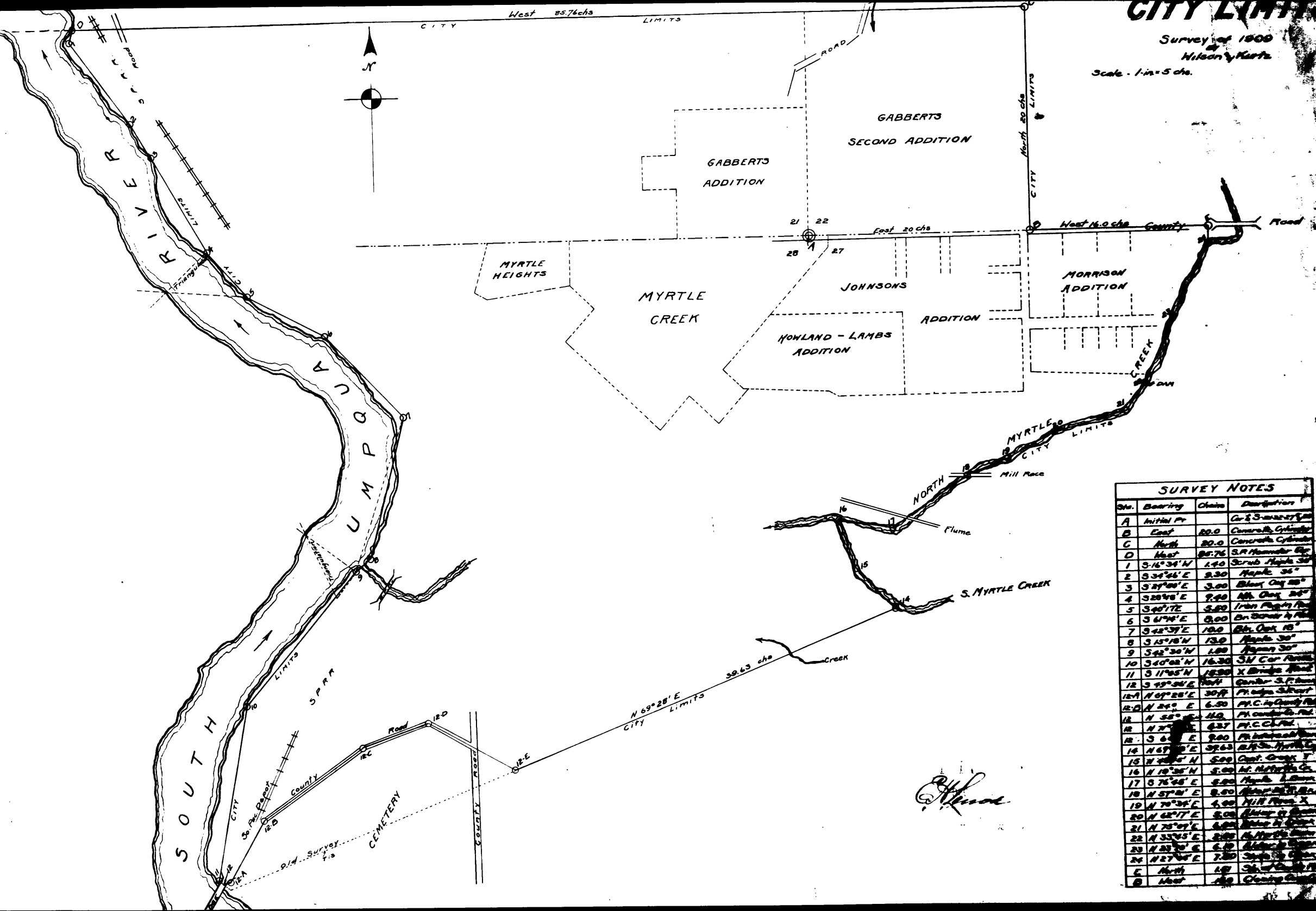
J.L. Perry - Dist Plat Engr  
730 S.W. Oak St.  
Portland, Oregon

C. S. File No. 40/54

# CITY LIMITS

Survey of 1900  
by  
Nelson & Kutz

Scale - 1 in = 5 chs.



Sta.	Bearing	Chains	Description
A	Initial Pt		Co. & S. corner of
B	East	80.0	Corner of Gabberts
C	North	20.0	Corner of Gabberts
D	West	85.76	S.R. Hammer Blk
1	S 16° 34' N	1.40	Scrub Maple 30"
2	S 34° 46' E	2.30	Maple 36"
3	S 27° 00' E	3.00	Blunt Oak 20"
4	S 20° 40' E	2.50	Blk. Oak 20"
5	S 40° 17' E	2.50	Iron Pipe 1/2"
6	S 67° 44' E	0.00	On corner of
7	S 42° 37' E	10.00	Blk. Oak 18"
8	S 15° 18' N	13.00	Maple 30"
9	S 42° 30' N	1.00	Maple 30"
10	S 40° 02' N	16.30	S.W. Cor. of
11	S 11° 05' N	15.00	X Blk. Oak
12	S 19° 54' E	10.00	Corner S.P. Ham
12A	N 67° 28' E	30.00	Pr. edge of
12B	N 24° E	6.50	M.C. in Quarry
12C	N 55° E	11.00	M. corner of
12D	N 77° E	6.37	M.C. in
12E	S 64° E	2.00	M. corner of
13	N 67° 0' E	32.63	Blk. S. Myrtle Cr
14	N 70° 0' N	5.00	Coal. Creek
15	N 10° 25' N	5.00	M. Myrtle Cr
16	N 76° 45' E	5.00	Maple 1 1/2"
17	N 57° 0' E	8.00	Blk. Oak 18"
18	N 70° 34' E	5.00	N.W. Corner X
19	N 42° 17' E	5.00	Blk. Oak 18"
20	N 75° 07' E	6.00	Blk. Oak 18"
21	N 33° 45' E	2.00	Blk. Oak 18"
22	N 22° 40' E	6.00	Blk. Oak 18"
23	N 27° 0' E	7.00	Blk. Oak 18"
24	N 27° 0' E	1.00	Blk. Oak 18"
C	North	1.00	Blk. Oak 18"
D	West	1.00	Closing Curve

*Nelson*