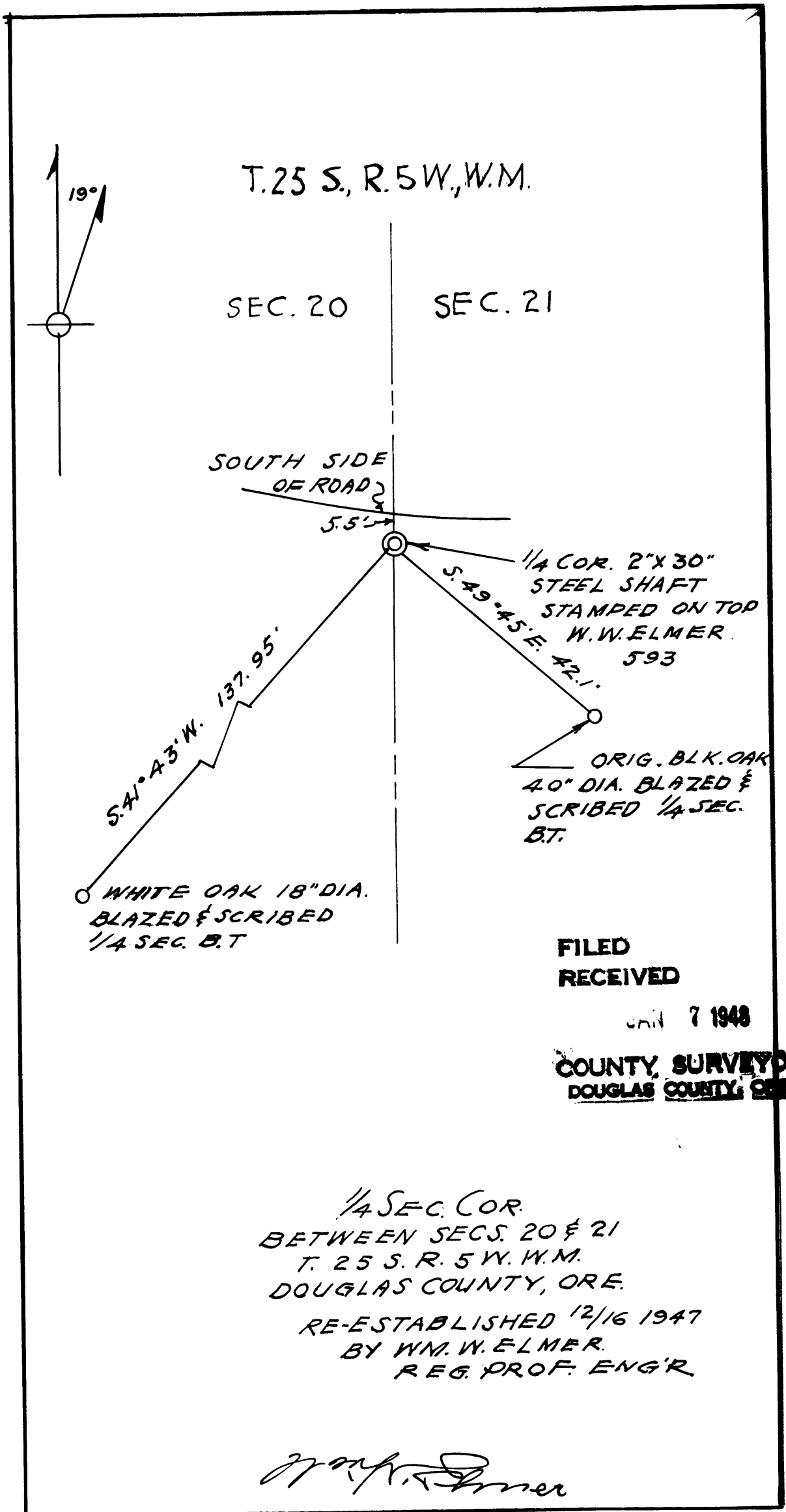


**COUNTY SURVEYORS FILE DATA
DO NOT REMOVE FROM OFFICE**



REESTABLISHMENT OF 1/4 COR. BETWEEN SECS. 20-21,
TOWNSHIP 25 S., RANGE 5 W., of WILLAMETTE MERID-
IAN, DOUGLAS COUNTY, OREGON

For a tie to the 1/4 Cor. above referred to from the Initial Point of Mabel J. Aaby Subdivision which is a part of Lot 1, Block 1 of Plat "A" of Sutherlin Land & Water Co., search for that corner was made without avail, for which reason the corner was reestablished as per map attached here to and as shown in the following:

For Balfour Guthrie Company J. W. Cole made a survey Nov. 20, 1920 and found an iron pipe monument N. $49^{\circ} 45'$ W. 42.1 feet from a branching black oak which was a B. T. of the original survey, and which he re-scribed because of destruction of original inscription.

I found a part of what I assume to be Coles' inscription and on a living part of the oak, now 42 inches diameter, I scribed 1/4 Cor. B. T. and from a nail on the approximate vertical center line of that oak set a 2 inch x 34 inch steel shaft 30 inches in the ground north $49^{\circ} 45'$ West 42.1 feet for the reestablished 1/4 Corner. Stamped on the top surface this shaft bears the inscription W. W. Elmer 593. From this reestablished 1/4 corner South $41^{\circ} 43'$ West 137.94 feet is a white oak 18 inches diameter which I blazed and scribed 1/4 Cor. B. T.

Supporting data as to the acceptance of the 42 inch black oak as the bearing tree of the original and Cole notes, as follows:

On a North-South line the tree is approximately 990 feet from the South bank of the creek referred to in original notes and 45.5 feet from the cut bank of a road referred to in Coles' notes.

FILED

RECEIVED

DEC 7 1948

**COUNTY SURVEYOR
DOUGLAS COUNTY, ORE.**

Bearings of this survey were projected from the bearing of Central Avenue of City of Sutherlin on a base line of 1000 feet, more or less.

Reestablished Dec. 16, 1947.

Registered Prof. Engineer

Claud Schrack
Assistant

>

40/32