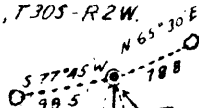


1/4 COR BETWEEN  
SEC'S 28 & 33, T30S-R2W.

Found 16" Pine (Scribes partly legible)  
without Chaping.



Found corner stone with "x"  
Set 3" Iron pipe 6" North of Stone

Found 24" Fir  
(Bark scribes legible)

**COUNTY SURVEYORS FILE DATA  
DO NOT REMOVE FROM OFFICE**

PLAT OF  
TILLER COMMUNITY HOUSE SITE  
FOR  
ELTON JACKSON

SCALE 1" = 200' - MAG. VAR. 20° 45' E.  
AUGUST 1947

555.3'  
1320.0'  
South

Mill Stack ○

REGISTERED  
OREGON  
LAND SURVEYOR

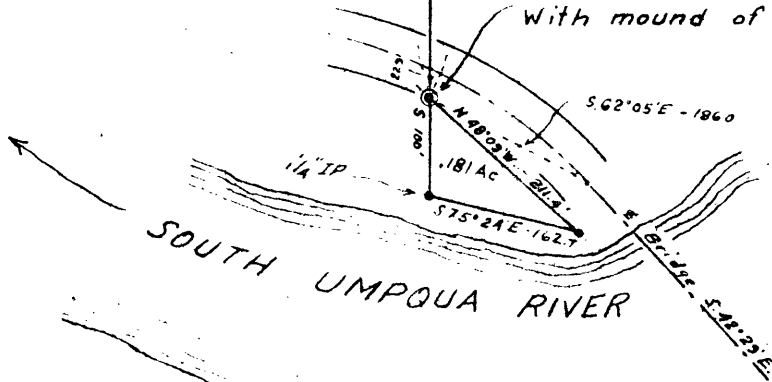
*Charles S. Collins*

JULY 5 1946  
CHARLES S. COLLINS  
176

Office

523.0'

Set 2" x 40" Iron pipe  
With mound of stones



2-15-55 Note!  
Iron pipes shown South of Hwy are gone,  
G. J. Wundersoth.

COUNTY SURVEYORS FILE DATA  
DO NOT REMOVE FROM OFFICE

FIELD NOTES

Survey for Elton Jackson - Sect. 33, T.30 S., R.2 W.W.M.  
Douglas County, Oregon - August 1947  
Charles S. Collins - ORLS 176

Found the  $\frac{1}{4}$  Section corner between Section 28 and Section 33, T.30 S., R.2 W.W.M. Corner and accessories are as renewed by the County Surveyor and recorded in the County Surveyors Office of Douglas County, Oregon.

A 16 inch Pine bears N.65° 30'E 78.8 feet (scribes legible)  
A 24 inch Fir bears S.77° 45'W.99.5 feet (bark scribe legible)

Corner stone easily displaceable, set 3 inch iron pipe 6 inches North.

Beginning at the above corner I run:  
South (Var. 20° 45' E.)

208.0 feet to creek 2 feet wide course SW.  
1112.0 feet Set a 2"x 40" iron pipe 24 inches in ground and piled rocks within 4 inches of top. Marked "176". Near S. R/w Canyonville - Trail State Highway.  
1212.0 feet Set 1 $\frac{1}{4}$  inch iron pipe marked "176".

Thence: S.75° 24'E  
162.7 feet Set 1 $\frac{1}{4}$  inch iron pipe marked "176".

Thence: N.48° 09'W.  
211.4 feet To previously set 2"x40" pipe.

Thence: S.62° 05'E.  
186.0 feet To center of approach of OSHD bridge over S.Ump.

Thence: S.42° 29'E.  
Along centerline of bridge. (S.42° 32'E. OBHD Data)

  
Charles S. Collins

FILED  
RECEIVED

SEP 13 1947

COUNTY SURVEYOR  
DOUGLAS COUNTY, ORE.

C. S. File No. 40/28