

Line Date Dec. 1946 Party Barnhart

Weber

Stubblefield

Project Section Line Between Sections

29-30 T29S RAW W.M.

30, 29
31 | 32

Found 18" Red Fir bearing tree (dead) measured N 5° E 23links (15.2 feet), set 3/4" iron rod 30" long for section corner, from which new bearing trees were set.

- A 8" Fir bears N19°52'W a distance of 4.0 feet
- A 5" Fir " N 45°07'E " 20.3 feet
- A 5" Yew " S64°57' E " 28.7 feet
- A 16" Cedar " S50°03' W " 20.5 feet

Thence ran North on a random line, could not find any trace of the 1/4 corner so continued North to the section corner. Found a spring leaf and all four bearing trees, set in 1945, for section corner to sections ~~29-24~~ 29-30 T29S RAW W.M.

Figured distances between section corners and found it to be 5494.50 feet.

Set 3/4" Iron Rod 30" long. 2747.25 from section corners and on a true line between them, from which

- A 12" fir bears S68°17'W 22.7 feet
- A 3" fir bears S81°58'E 4.2 feet

1/4 S30/S29

REGISTERED
OREGON
LAND SURVEYOR

G. A. Barnhart

JAN. 1. 1945
G. A. BARNHART
120

U.S. File No. 40/12 A

P

Line Date June 1947 Party Barnhart
 West Line of Section 32 T29S R4W Weber
 Project Stubblefield

From the corner common to sections 29, 30, 31 & 32 T29S R4W W.M., I ran South on a random line to the corner common to 31 & 32 T29S R4W and 5 & 6 T30S R4W, found a 14" laurel, that was set in 1889, dead and fallen over, could still read all of the scribing.

Measured S30°E a distance of 37 links (24.4 feet) from stump hole and set a 1-1/4" iron pipe for the section corner; from which

- A 16" Fir bears N24°14'W a distance of 31.5 ft,
- A 14" Fir bears N33°51'E a distance of 31.5 ft.
- A 12" Fir bears S51°19'E a distance of 34.0 ft.
- A 40" Fir bears S69°26'E a distance of 4.0

Co-ordinated a true line and distance between the corners, found it to be S22°23'W and 4152.76 feet. Then by proportional measure set a 3/4" x 30" iron rod ~~for~~ 2076.4 feet from both corners and on a true line between them for 1/4 corner; from which

14 531 / 532

- A 5" White Fir bears S80°40'W a dist. of 9.0 ft.
- A 36" Red Fir bears N40°25'E a dist. of 26.6 ft.

Searched the surrounding country for the original 1/4 corner. Could find signs of the section line or that the 1/4 corner had ever been run or set.

REGISTERED
ORIGINAL
G. A. Barnhart
G. A. BARNHART
 120

B
 40/12

S. File No.

June 1947

Line Date

Barnhart

Party

Weber

South Line of Section 32 T29S R4W Stubblefield
Project Between West corner and 1/4 corner

5/4 sec 32

From the South section corner of 31 & 32
T29S R4W W.M. ran east on a random line to
the 1/4 corner of section 32. Found 8" Oak (dead)
and 24" Laurel (in good condition), from Laurel
measured S70°W 63 links (41.6 feet) and set a
bottle and 4"x4" oak post for 1/4 corner;
from which

- A 24" Laurel bears N70°E a dist. of 41.6 ft.
- A 10" Fir bears N59°30'E a dist of 2.9 ft.
- A 12" Fir bears N10°00'W a dist. of 14.5 ft.

By co-ordinates found the true line to be
N39°23'EE and a distance of 2624.8 feet.

REGISTERED
OREGON
LAND SURVEYOR

G. A. Barnhart

JAN. 1, 1945
G. A. BARNHART
120

✓

40/19 c

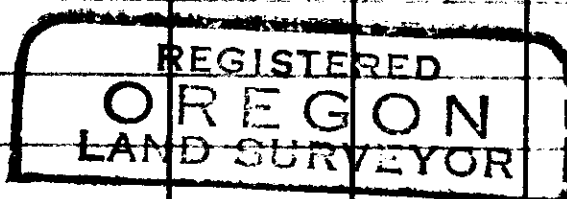
Line Date June 1947 Part Barnhart
Weber
West Line of S32 T29S R4W W.M. Stubblefield
Project

Information on the North Line of Section 32

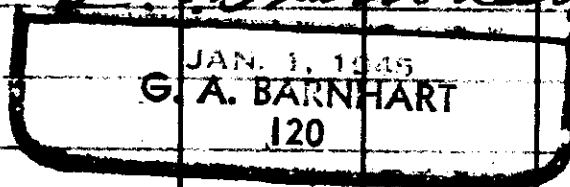
From the N.W. corner of Section 32

I ran N89°30'E the given distance to the 1/4 corner (2659.8 feet) and to the NE corner of section 32 (5319.6 feet).

The 1/4 corner came in an old burn, could not find any signs of the bearing trees. Could not find any of the bearing trees at the section corner. Did find a few line blazes between the 1/4 corner and the section corner.



G. A. Barnhart



C. S. E. No. 40/19^D

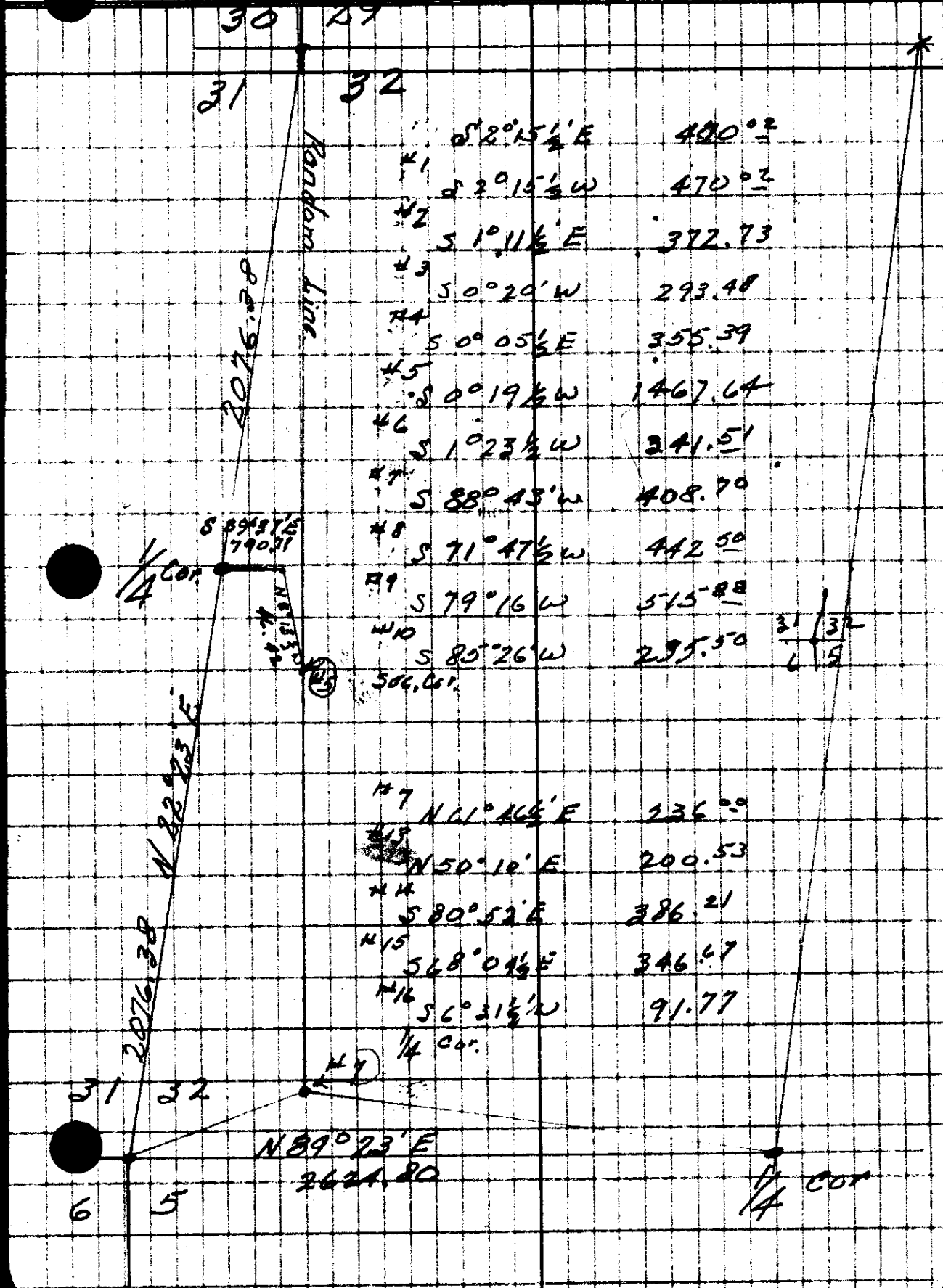
over

OREGON STATE HIGHWAY COMMISSION

TRANSIT SHEET

Form E33-8M-4-45

T 295 R 4W W.M.



#1	S 2° 15' 1/2" E	400.02
#2	S 2° 15' 1/2" W	470.02
#3	S 1° 11' 1/2" E	372.73
#4	S 0° 20' W	293.48
#5	S 0° 05' 1/2" E	355.39
#6	S 0° 19' 1/2" W	1467.64
#7	S 1° 23' 1/2" W	241.51
#8	S 88° 43' W	408.70
#9	S 71° 47' 1/2" W	442.50
#10	S 79° 16' W	515.88
#11	S 85° 26' W	295.50
#12	506.61	

#17	N 61° 46' E	236.09
#18	N 50° 10' E	200.53
#19	S 80° 52' E	386.21
#20	S 68° 04' 1/2" E	346.47
#21	S 6° 31' 1/2" W	91.77

#29
N 89° 23' E
2624.80

31 | 32

4 | 5

OREGON STATE HIGHWAY COMMISSION

TRANSIT SHEET

Form E33-8M-4-45

19 30
29 29
Spring West

T29S R4W. W.M.

4°52' Rt. 458.2!

29°27½" Lt. 2079.51

1°10" Lt. 216.51

27°31½" Rt. 232.15

1°05' Lt. 104.22

0°48' Rt. 214.72

0°10½" Rt. 1435.10

11°00' Lt. 99.58

22°00' Rt. 360.00

11°00" Lt. 360.00

CS 40/19 E

North 5494.50

(Meas)
626.79

672.2
172.7
25.3

64.50

64.50

REGISTERED
OREGON
LAND SURVEYOR

G. A. Barnhart

JAN 1, 1945
G. A. BARNHART
120

North

30 29

31 32