

FILED  
RECEIVED

AUG 19 1947

COUNTY SURVEYOR  
DOUGLAS COUNTY, ORE.

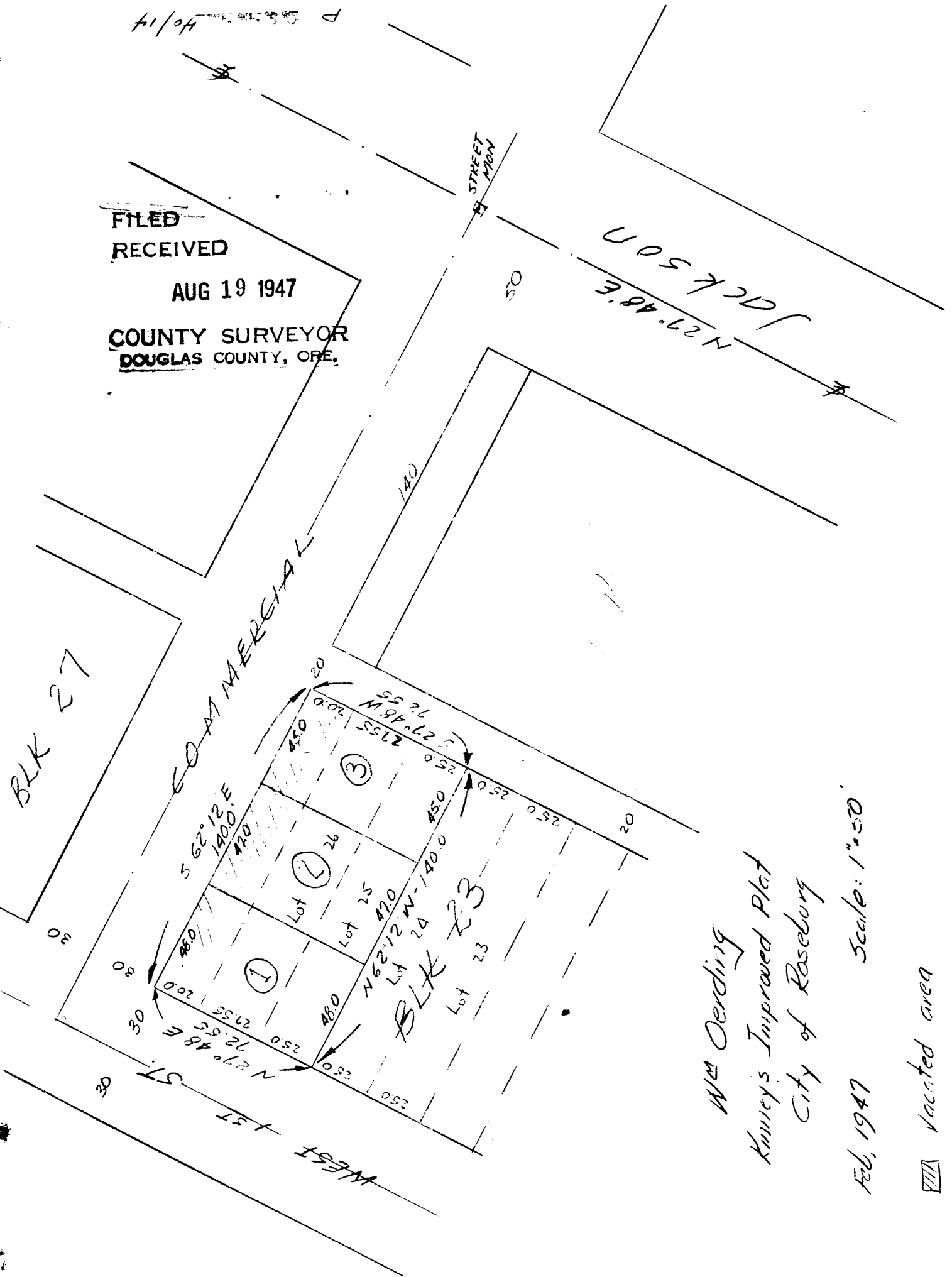
40/14

STREET  
MON

N 27° 48' E  
JACKSON

BLK 27

COMMERCIAL



Wm Oerding  
Kinney's Improved Plat  
City of Roseburg

Feb, 1947 Scale: 1"=50'

 Vacated area

CS FILE FOLDER

CONTAINS

MORE

INFORMATION