

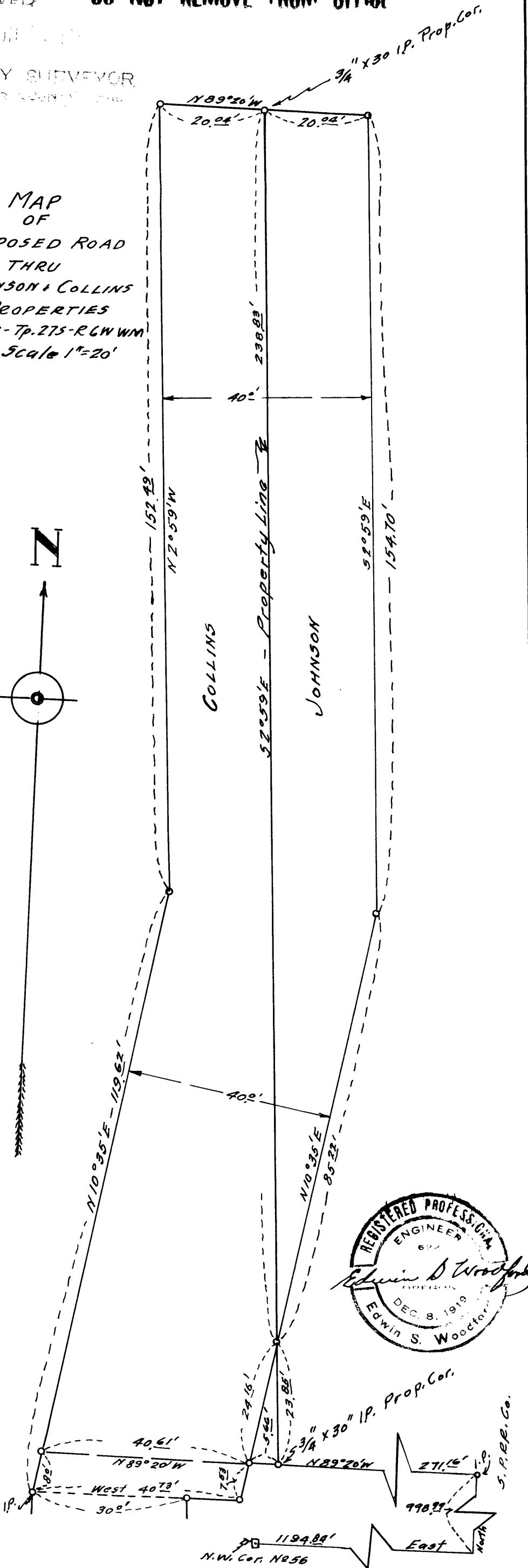
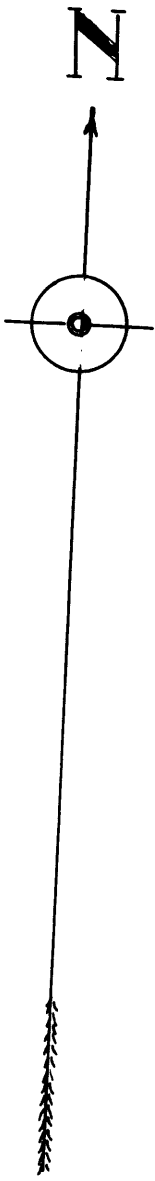
COUNTY SURVEYORS FILE DATA  
DO NOT REMOVE FROM OFFICE

FILED  
RECEIVED

JUL 1919

COUNTY SURVEYOR  
MISSOURI COUNTY, MO.

MAP  
OF  
PROPOSED ROAD  
THRU  
JOHNSON & COLLINS  
PROPERTIES  
Sec. 12 - Tp. 27S - R. 6W - W. 4N  
Scale 1" = 20'



CS FILE FOLDER

CONTAINS

MORE

INFORMATION