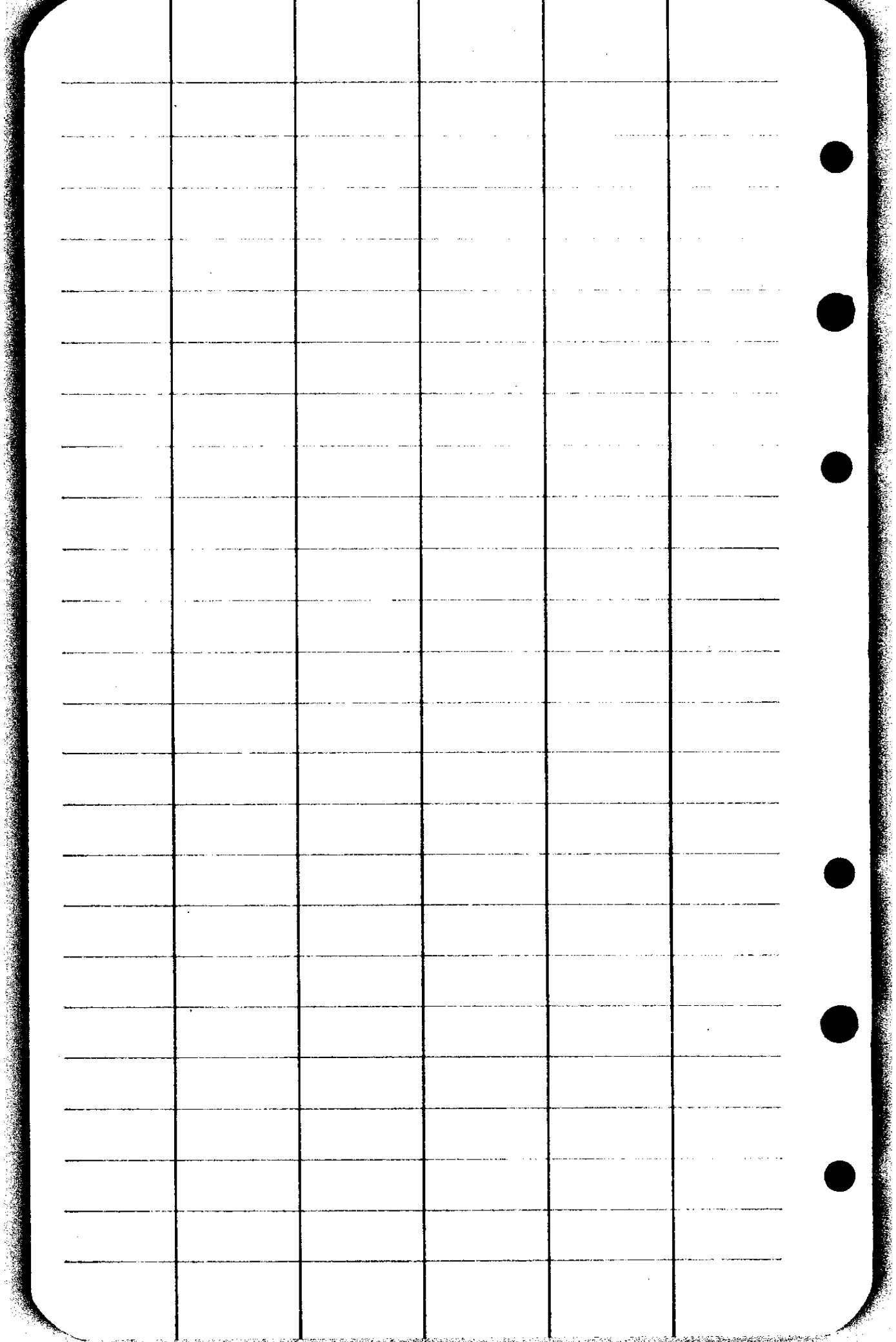


U. S. File No. 39/167

Ashbaugh -
T 225 - R 5121.
April - 6 - 7 - 48

Evans - T
Godfrey H.C.



N.W. Corner DLC No 38

Fd Rock Corner identified
from old Oak witness tree -

N 5° W - 72 lks - Standing -

Scribe marks in form -

Reset corner rock

Marked 16" D. Fir N 49 1/4° W - 355

" 24" D. Fir S 64 1/2° W - 397

-15° 05'

Rec'd
4-19-48

S. File No. 321167

4

①

Hub 4

Hub 1

260° 00'
132° 02' R

Hub 3

Hub 1

265° 04'
132° 32' R

Hub 2

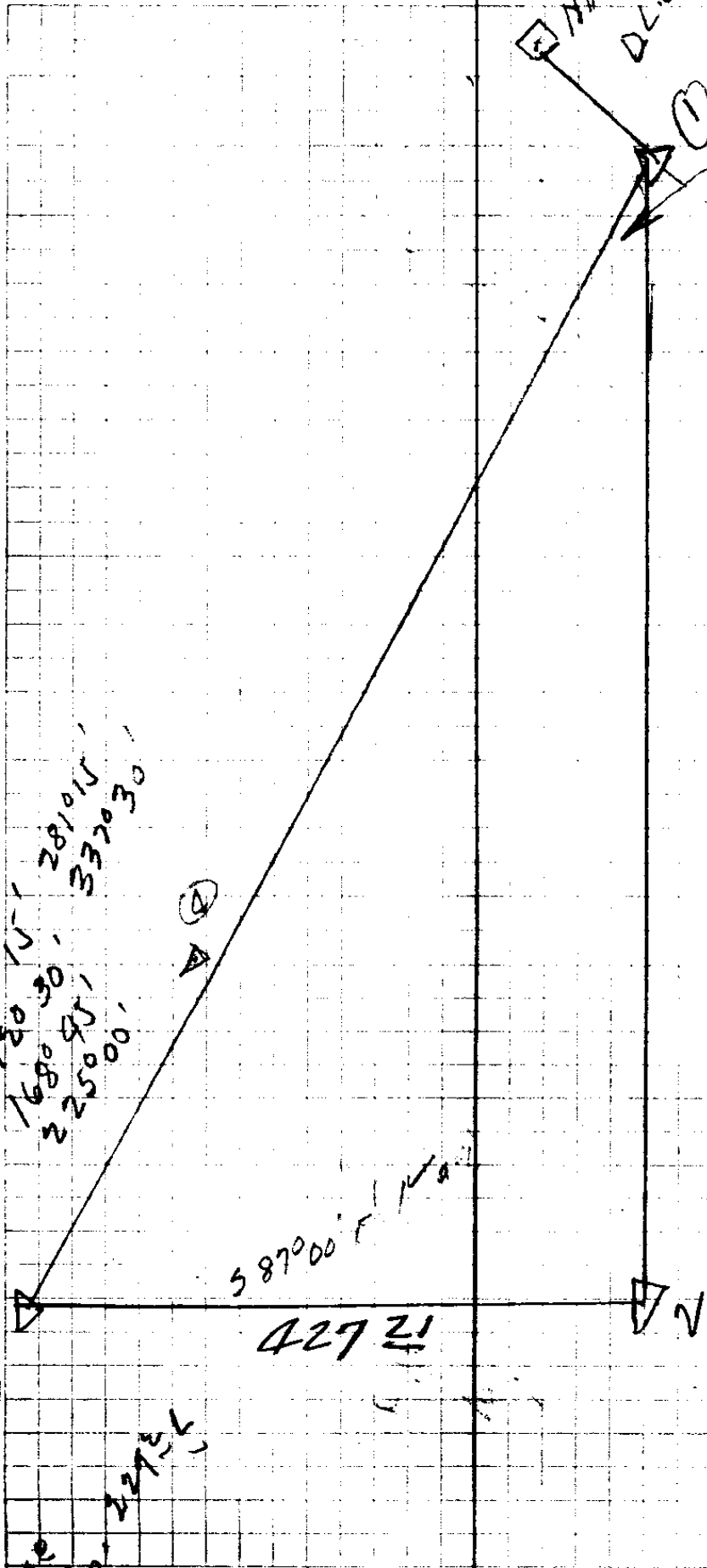
Hub 1

247° 14'
123° 37' R

296

NW
D.L.C. Cor. #38

②



8°56'20"
 17°54'
 26°50'
 35°46'
 44°42'
 53°38'

560
 1180 N
 1680.30
 2250.45
 2810.15
 3370.30

58700' N

427 ±

③

2000
 800
 2275

114048'
 229037'
 344026'
 459015'
 574064'
 688053'
 114050'

S. File No. 32167

Sta	Dist	±	CC.	MC.	Slope
-----	------	---	-----	-----	-------

N. Corner

510

4

8° 17' R

1185.08

225° L
 300° L
 360° L
 300°
 + 200°

3

248° 38'
 124° 19' R

587° 00'

2

Spring Z

790 From A
50' R
SP

P.D. 11

Spring A

121
127

31035'

20622

88700'E

62

5 IN Car

2058' R
5056'

~~A~~ 2

S. File No. 397/167

8

741⁹

7

40°44'
2°22'R

141⁸

6

13°02'
6°31'R

156⁶

5

331°43'
165°51'R

186⁴

187⁴
-6°43'

4

30°08'
15°04'L

3

165

B.C. & Hwy 145 Lt

E.C. & 145 Lt.

W.

Hwy & 145 Lt

On Highway R/W & 145 Lt. on C.

S. File No. 32167

3

2

24° 30'
12° 15' L

51°

9

81° 50'
90° 56' R

153°

8

5° 20'
2° 40' L

7

8

2007

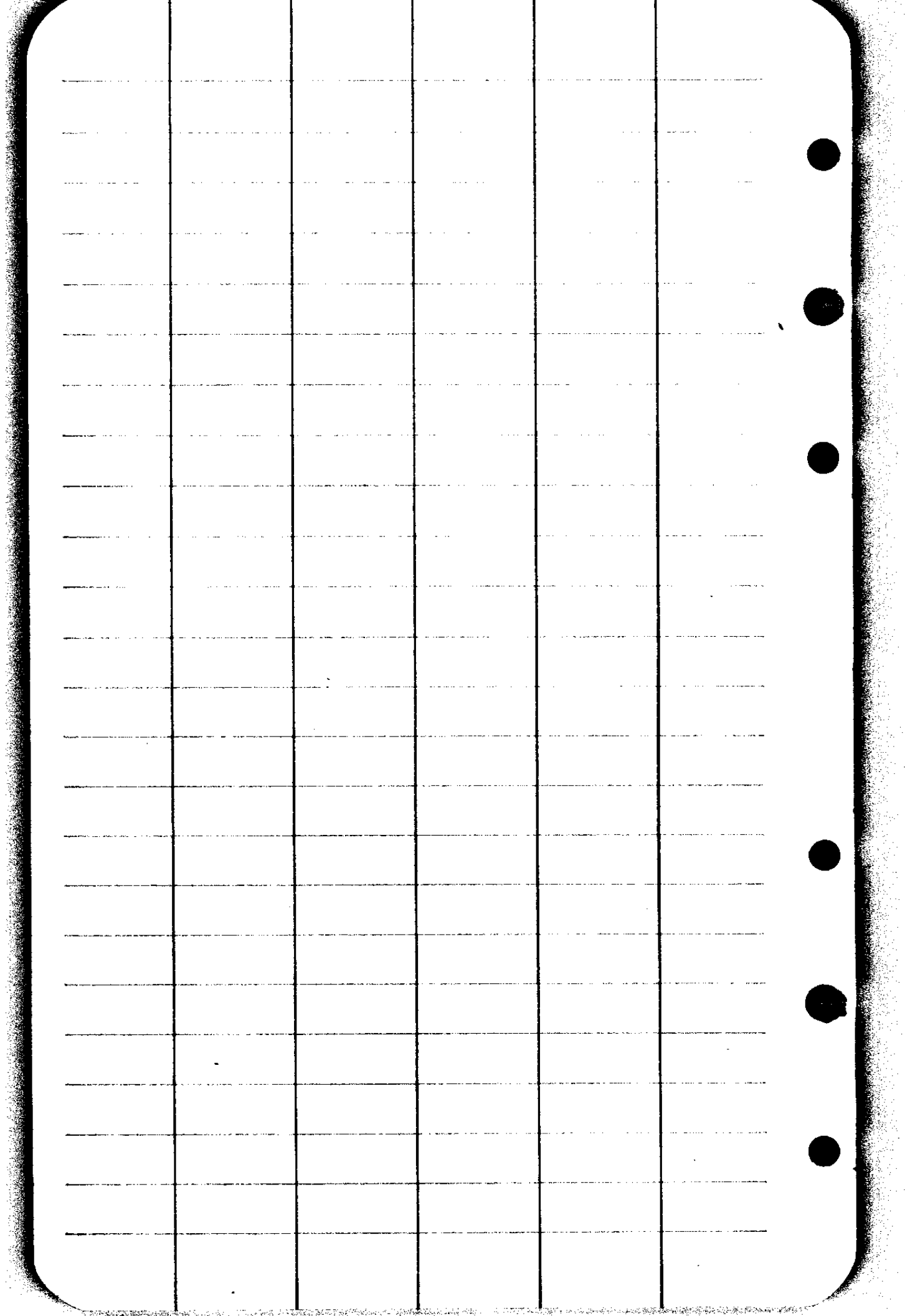
S. File No. 321167

SE COR

162

106 1/2 9

8



CS FILE FOLDER

CONTAINS

MORE

INFORMATION