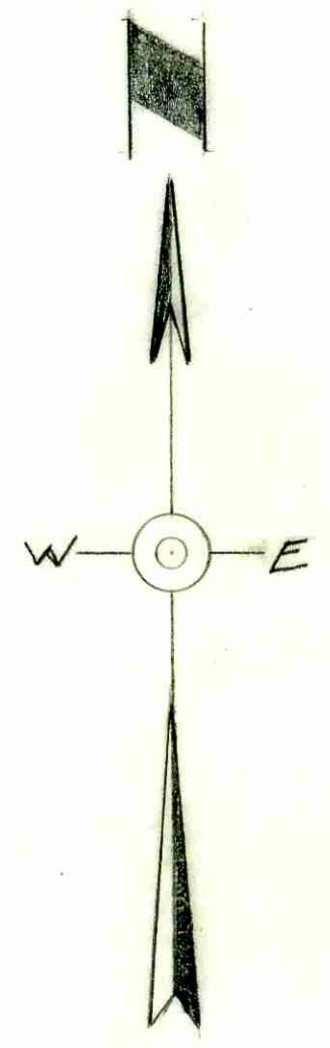


Fowler St

Int. L. Cor. D.L.C. No. 38
(S.W. 1/4)

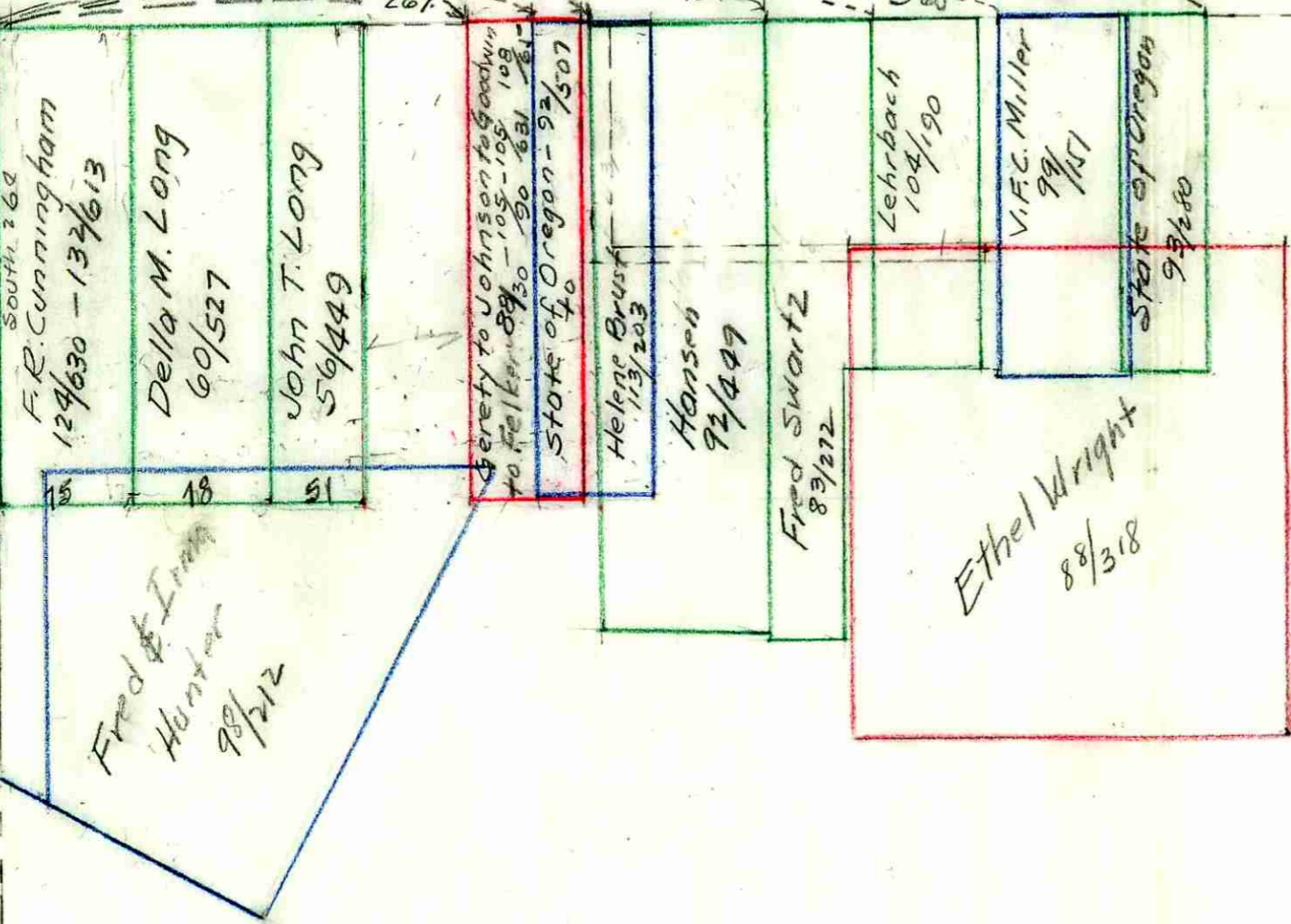
South Line W.T. Perry D.L.C. No. 39

Douglas Street



East Line A. Rose D.L.C. #39
South 268

Washington St



MAP
 SHOWING OVERLAP OF DEEDS
 EAST DOUGLAS ST.
 ROSEBURG ORE.
 OFFICE OF BEN B. IRVING, C.E.
 COUNTY SURVEYOR.
 PLATTED 12-12-47 BY AREVANS E.M.

CS FILE FOLDER

CONTAINS

MORE

INFORMATION