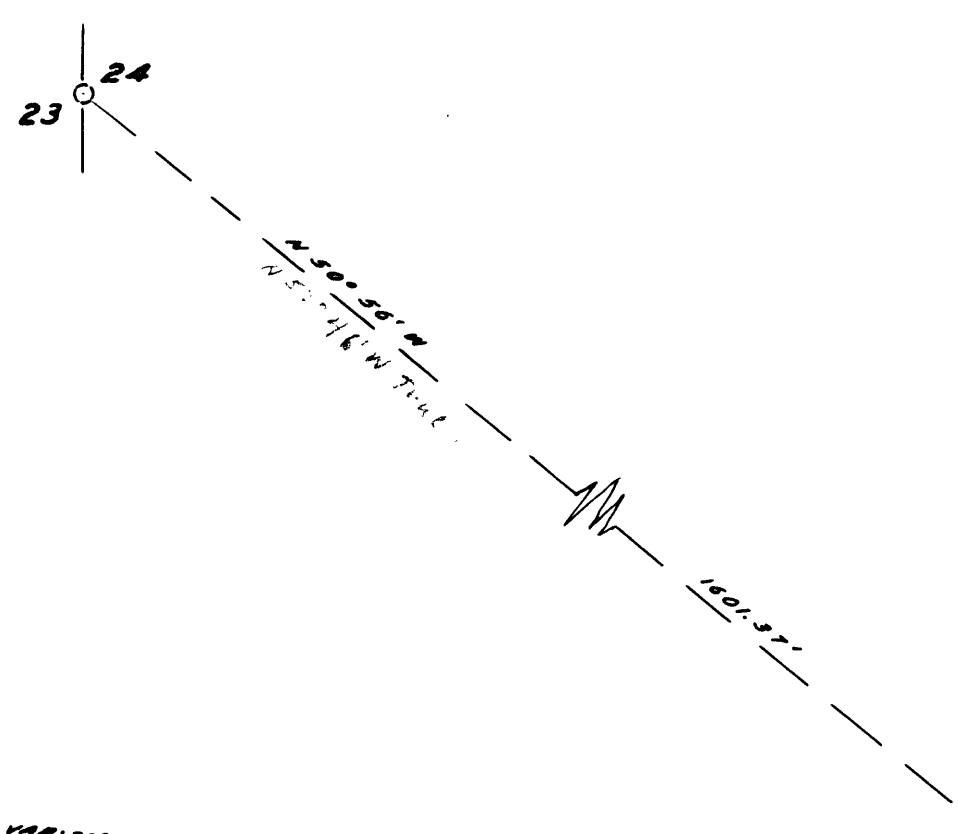
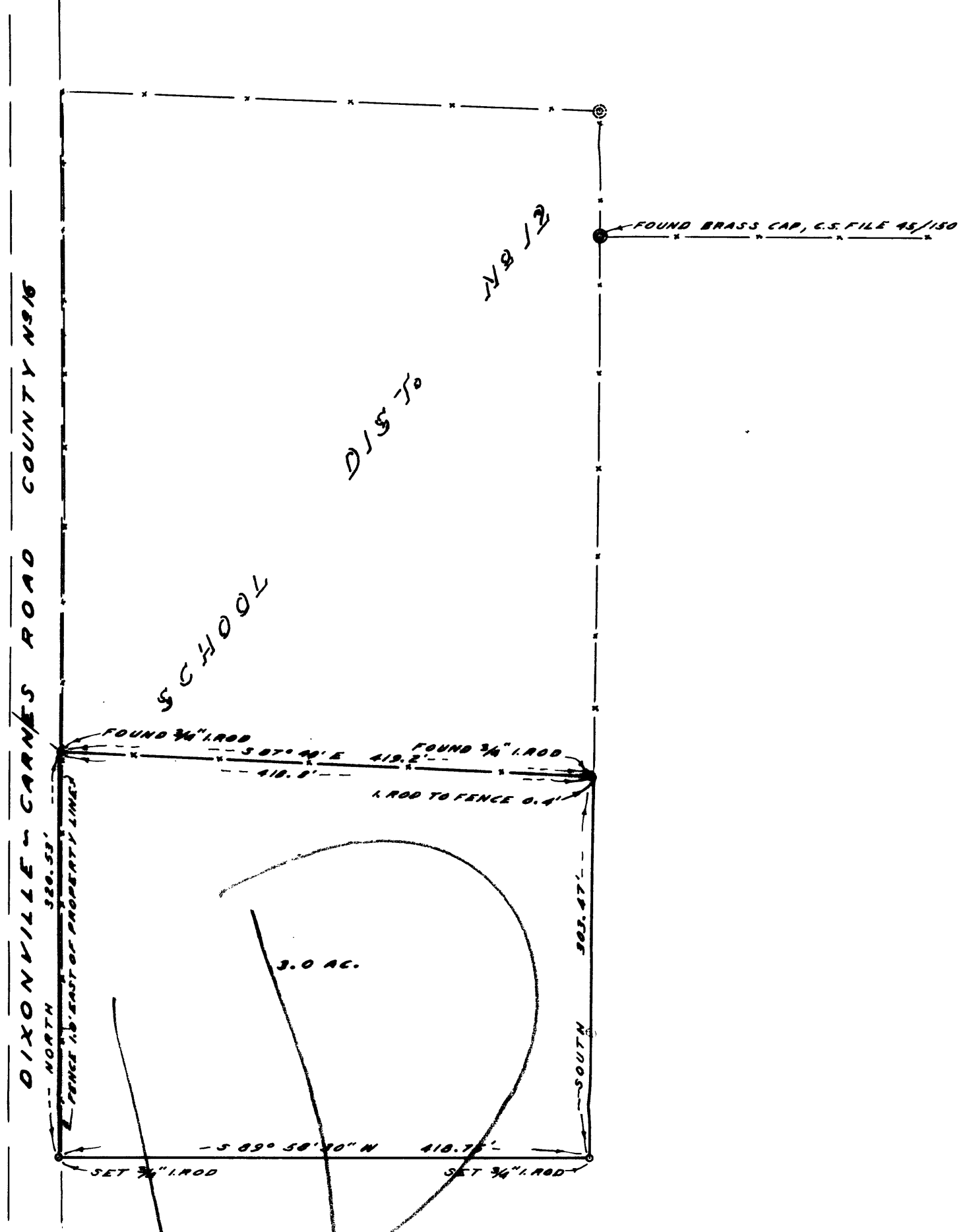


23
24



NOTE: FOR BASE BEARING
SEE C.S. FILE 39/115

VAR: 20' 30"



NOTE: THIS MAP REVISED BY SURVEY DATED
DEC. 18, 1959, SEE NEW MAP

See Revision
Dec 18, 1959

COUNTY SURVEYOR'S OFFICE
DOUGLAS COUNTY, OREGON

SURVEY FOR DEED DESCRIPTION,
SECTION 24, T27S., R.5W., W.M.

REGISTERED
OREGON
LAND SURVEYOR
James W. Byron
NOV. 8, 1953
JAMES W. BYRON
303

FRED M. DARBY COUNTY SURVEYOR
SURVEYED NOV. 30, 1959 BY
JAMES W. BYRON - DEPUTY SCALE 1" = 100'
SURVEYED FOR SCHOOL DIST. 12