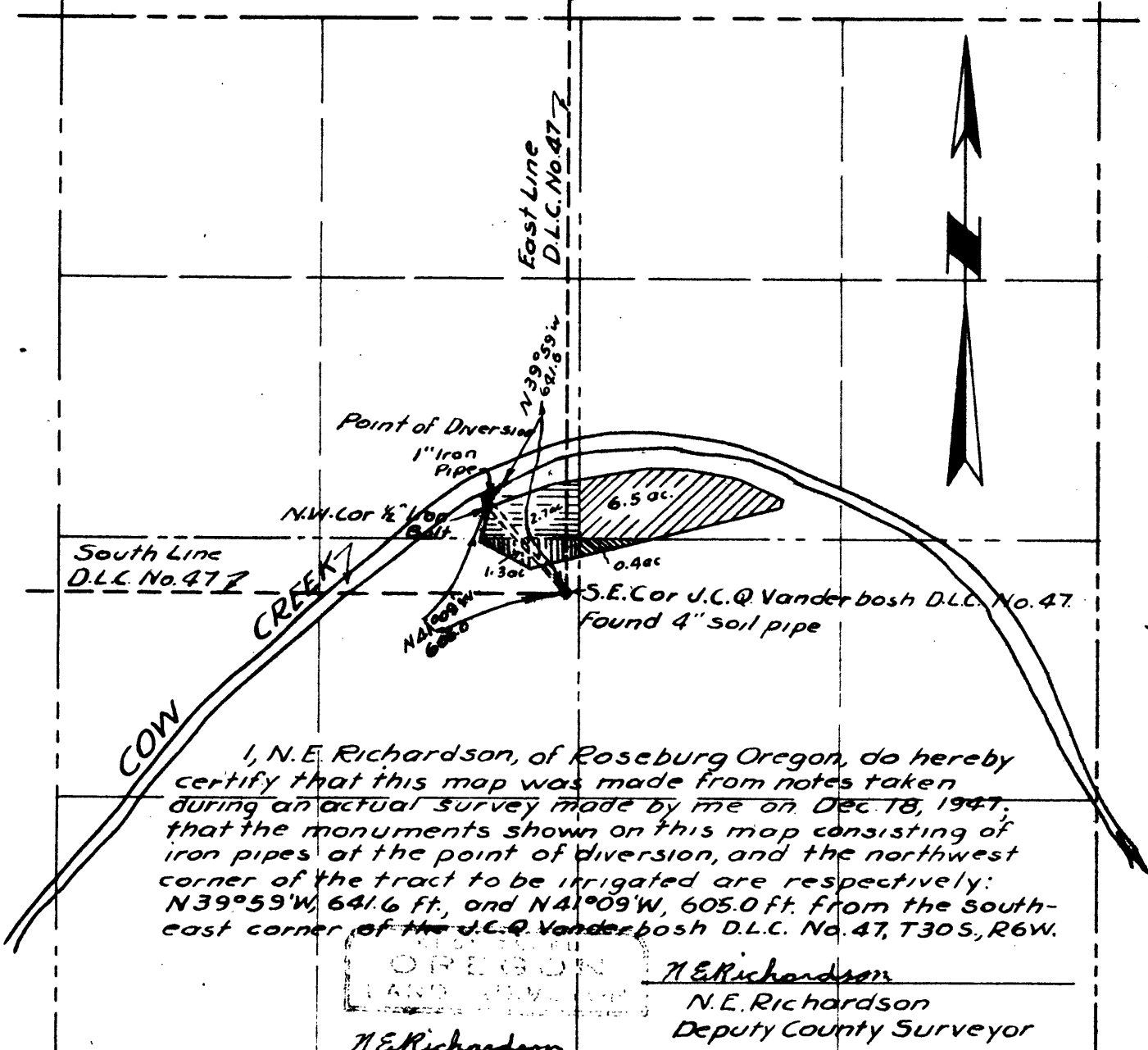


SEC. 24, T30S, R6W.



I, N.E. Richardson, of Roseburg Oregon, do hereby certify that this map was made from notes taken during an actual survey made by me on Dec. 18, 1947; that the monuments shown on this map consisting of iron pipes at the point of diversion, and the northwest corner of the tract to be irrigated are respectively:  $N39^{\circ}59'W$ , 641.6 ft., and  $N41^{\circ}09'W$ , 605.0 ft. from the southeast corner of the J.C. Q. Vanderbosh D.L.C. No. 47, T30S, R6W.

OREGON  
LAND SURVEYOR

N.E. Richardson  
N.E. Richardson  
Deputy County Surveyor

N.E. Richardson

OFFICE OF THE COUNTY SURVEYOR  
DOUGLAS COUNTY OREGON  
MAP FOR WATER RIGHT ON COW CREEK  
NW<sup>4</sup> SE<sup>4</sup>, SW<sup>4</sup> NE<sup>4</sup>, NE<sup>4</sup> SW<sup>4</sup>, SE<sup>4</sup> NW<sup>4</sup>,  
SECTION 24, T30S, R6W W.M.

BEN B. IRVING COUNTY SURVEYOR  
SURVEYED DECEMBER 18, 1947 BY  
N.E. RICHARDSON DEPUTY  
SCALE 1" = 800'