

39/113
M 16-40

BLOCK 19

St. Mon.
E. 3rd St. and
Commer. Ave.

BLOCK 20

St. Mon.
E. 2nd St. and
Commer. Ave.

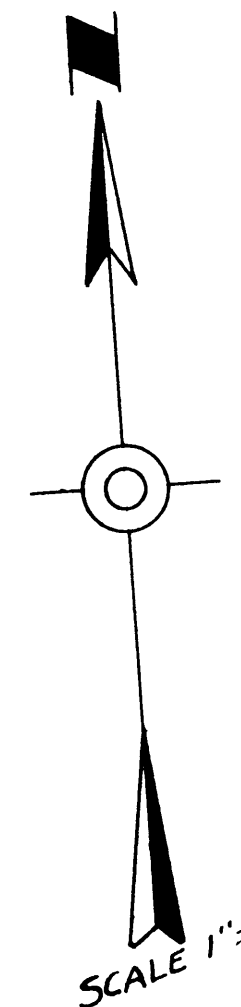
BLOCK 21

FIRST AVENUE SOUTH

N 87°04' W 359.85

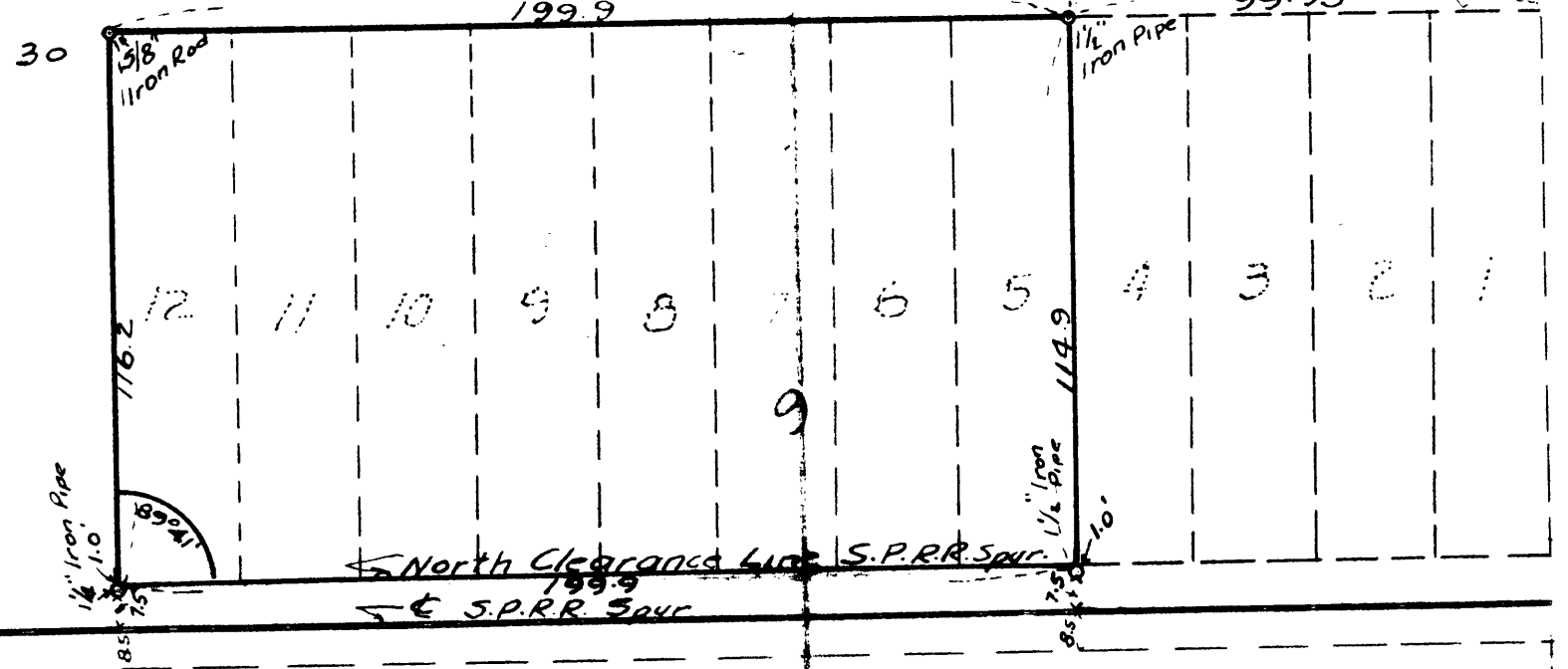
St. Mon.

St. Mon.



EAST SECOND STREET SOUTH

EAST THIRD STREET SOUTH



BLOCK RAILROAD ALLEY

**OFFICE OF THE COUNTY SURVEYOR
DOUGLAS COUNTY OREGON
SURVEY OF PART OF LOTS 5-12, BLK. 9
KINNEY'S IMPROVED PLAT, ROSEBURG.**

BEN B IRVING COUNTY SURVEYOR
SURVEYED, NOVEMBER 5, 1947. BY
N.E. RICHARDSON DEPUTY

REGISTERED
OREGON
LAND SURVEYOR

N.E. Richardson
JULY 7 1944
N. E. RICHARDSON
35

BLOCK 10