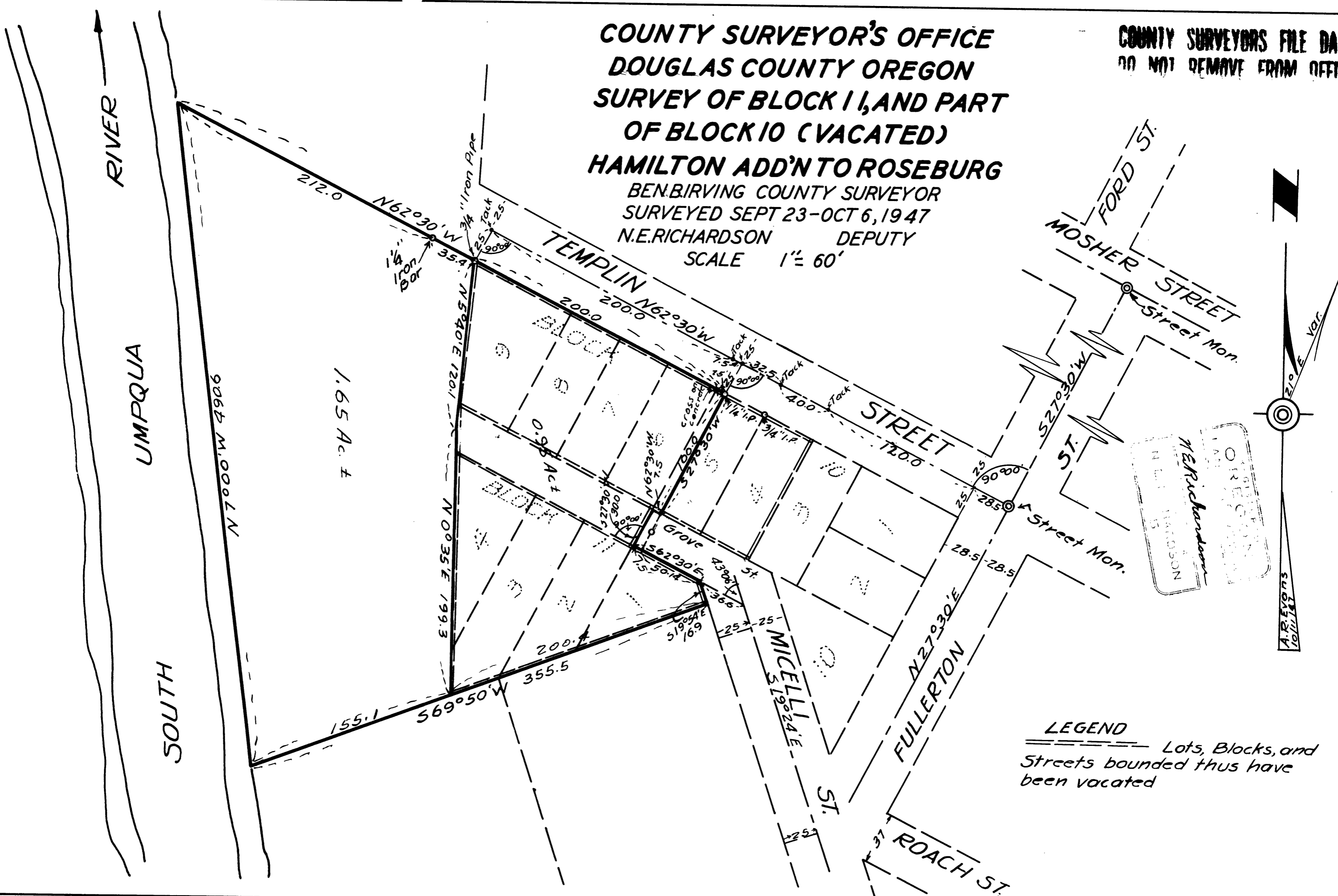


**COUNTY SURVEYOR'S OFFICE
DOUGLAS COUNTY OREGON
SURVEY OF BLOCK I, AND PART
OF BLOCK 10 (VACATED)**

HAMILTON ADD'N TO ROSEBURG
 BEN. BIRVING COUNTY SURVEYOR
 SURVEYED SEPT 23-OCT 6, 1947
 N.E. RICHARDSON DEPUTY
 SCALE 1" = 60'

COUNTY SURVEYORS FILE DATA
 DO NOT REMOVE FROM OFFICE



LEGEND
 ----- Lots, Blocks, and
 Streets bounded thus have
 been vacated

N.E. Richardson
 COUNTY SURVEYOR
 DOUGLAS COUNTY, OREGON
 1947

A. R. Evans
 10/11/47