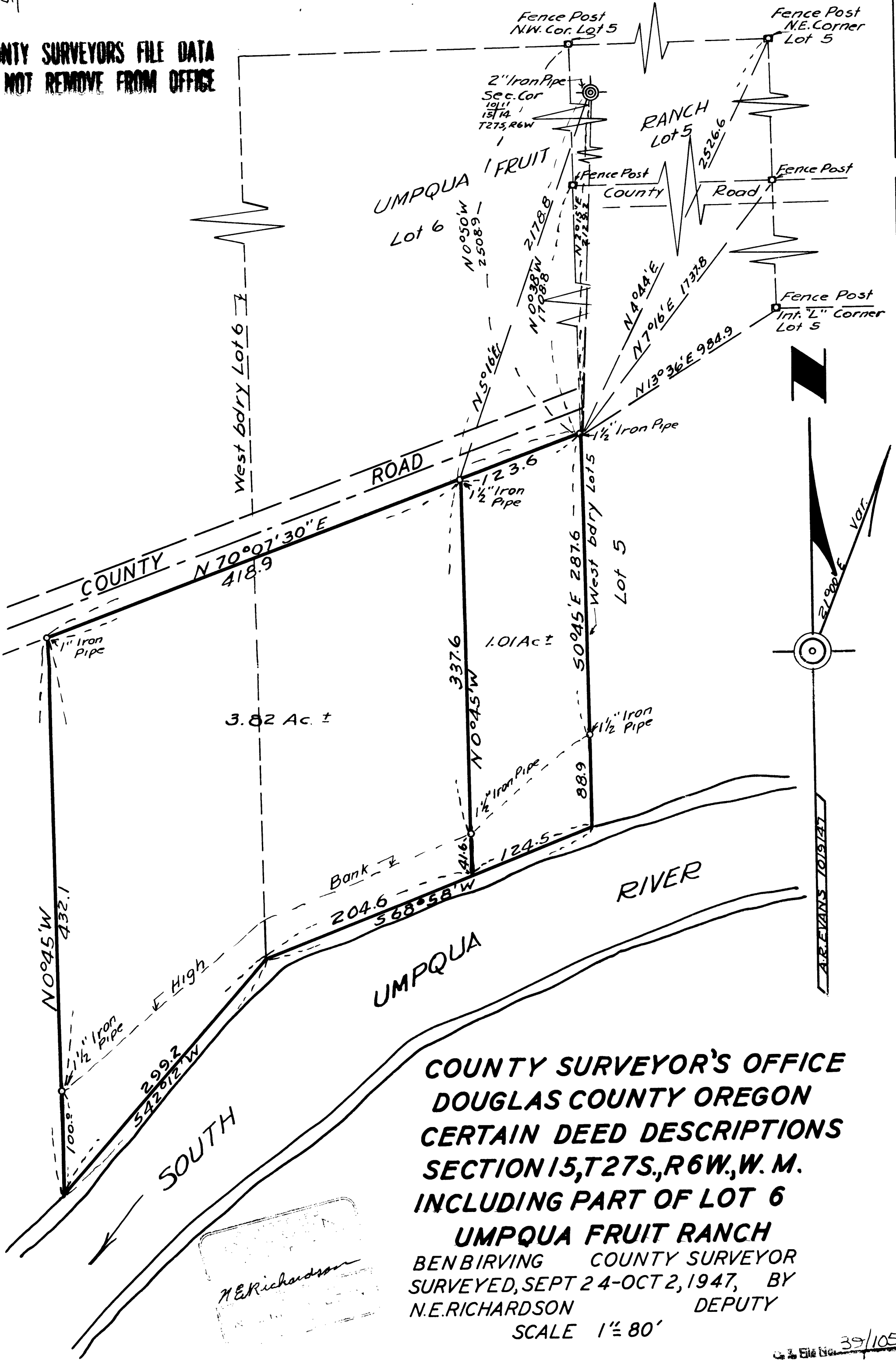


COUNTY SURVEYORS FILE DATA  
DO NOT REMOVE FROM OFFICE



**COUNTY SURVEYOR'S OFFICE  
DOUGLAS COUNTY OREGON  
CERTAIN DEED DESCRIPTIONS  
SECTION 15, T27S., R6W., W. M.  
INCLUDING PART OF LOT 6  
UMPQUA FRUIT RANCH**  
BEN BIRVING COUNTY SURVEYOR  
SURVEYED, SEPT 24-OCT 2, 1947, BY  
N.E. RICHARDSON DEPUTY  
SCALE 1" = 80'

*N.E. Richardson*