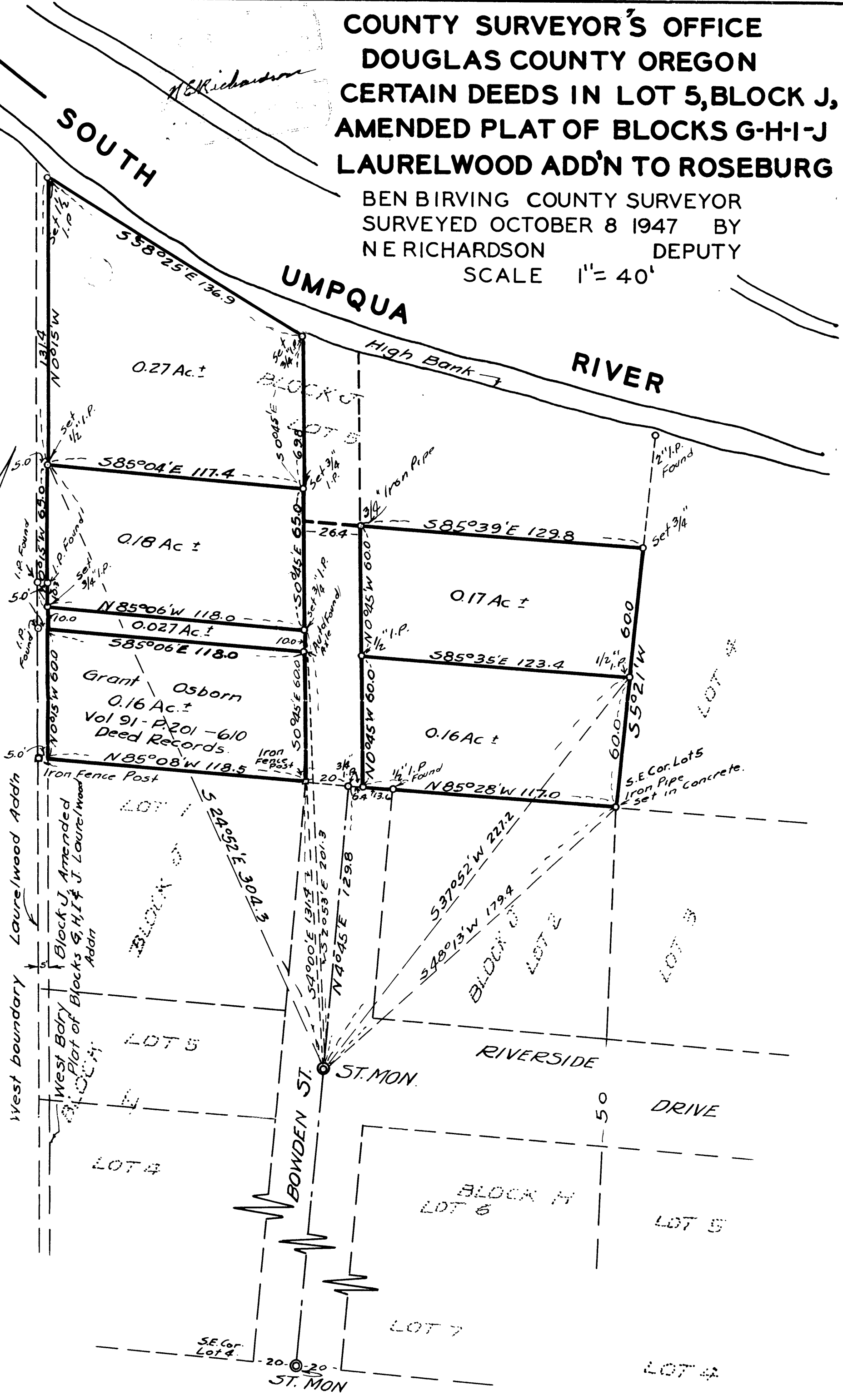
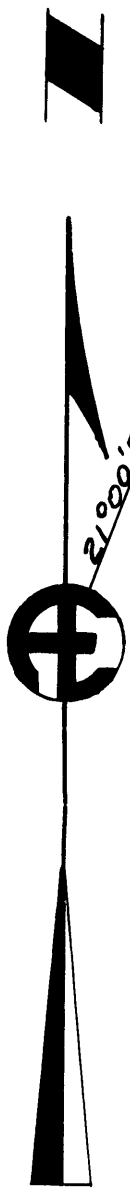


COUNTY SURVEYOR'S OFFICE  
 DOUGLAS COUNTY OREGON  
 CERTAIN DEEDS IN LOT 5, BLOCK J,  
 AMENDED PLAT OF BLOCKS G-H-I-J  
 LAURELWOOD ADD'N TO ROSEBURG

BEN BIRVING COUNTY SURVEYOR  
 SURVEYED OCTOBER 8 1947 BY  
 N E RICHARDSON DEPUTY

SCALE 1" = 40'



COUNTY SURVEYORS FILE DATA  
 DO NOT REMOVE FROM OFFICE

A.R. Evans 10-17-46