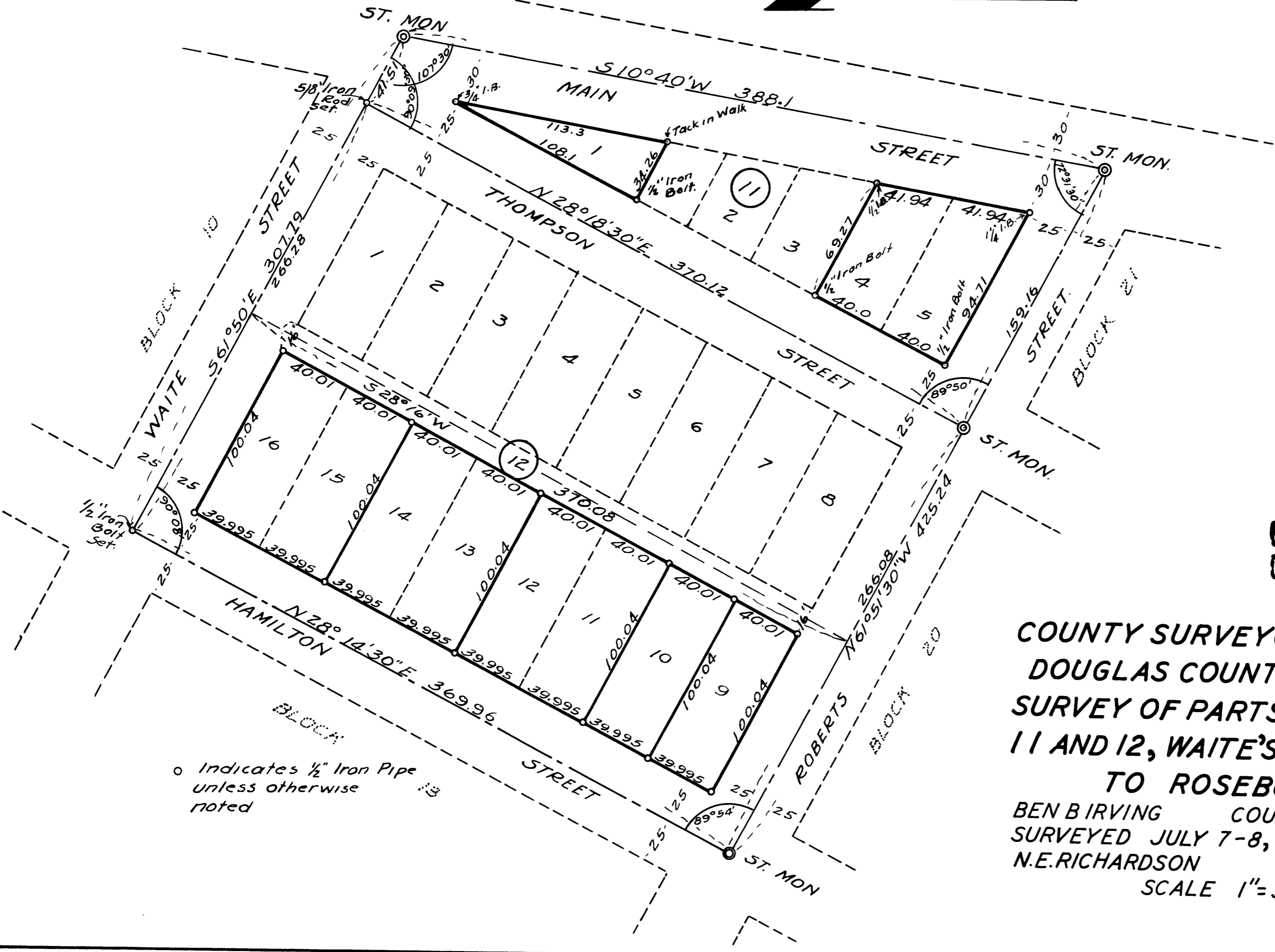


A.R. EVANS 7/25/47

REGISTERED
OR
LAND SURVEYOR
N.E. RICHARDSON
JULY 7, 1944
N.E. RICHARDSON



COUNTY SURVEYORS FILE DATA
DO NOT REMOVE FROM OFFICE

COUNTY SURVEYOR'S OFFICE
DOUGLAS COUNTY OREGON
SURVEY OF PARTS OF BLOCKS
11 AND 12, WAITE'S ADDITION
TO ROSEBURG

BEN B IRVING COUNTY SURVEYOR
SURVEYED JULY 7-8, 1947 BY
N.E. RICHARDSON DEPUTY.
SCALE 1" = 50'

o Indicates 1/2" Iron Pipe
unless otherwise
noted