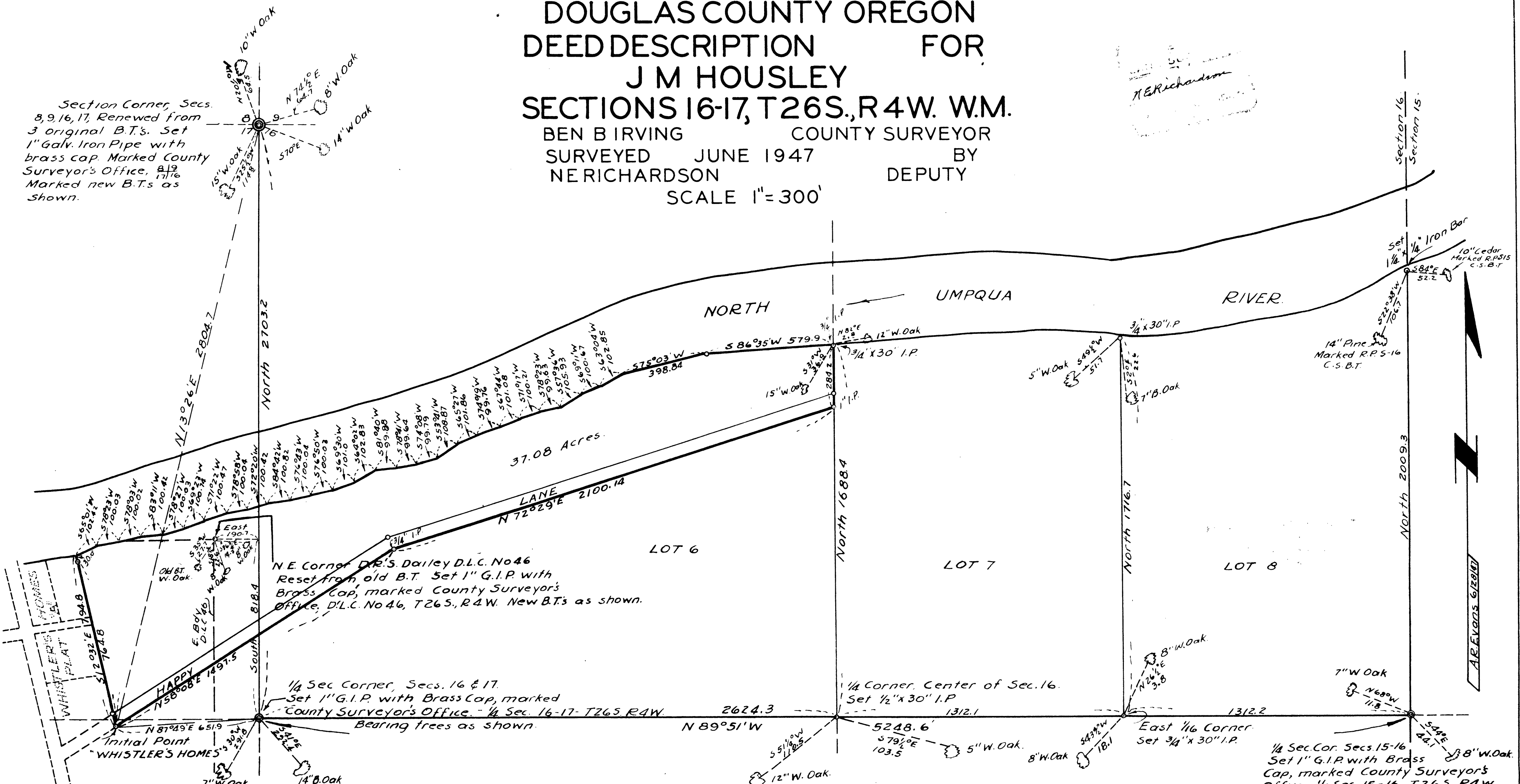


COUNTY SURVEYOR'S OFFICE
DOUGLAS COUNTY OREGON
DEED DESCRIPTION FOR
J M HOUSLEY
SECTIONS 16-17, T26S., R4W. W.M.
 BEN B IRVING COUNTY SURVEYOR
 SURVEYED JUNE 1947 BY
 NE RICHARDSON DEPUTY
 SCALE 1" = 300'

Section Corner, Secs.
 8, 9, 16, 17, Renewed from
 3 original B.T.'s. Set
 1" Galv. Iron Pipe with
 brass cap. Marked County
 Surveyor's Office, 8/19
 Marked new B.T.'s as
 shown.

N.E. Richardson
 (Signature)



N.E. Corner D.B.'s Dailey D.L.C. No 46
 Reset from old B.T. Set 1" G.I.P. with
 Brass Cap, marked County Surveyor's
 Office, D.L.C. No 46, T26S., R4W. New B.T.'s as shown.

1/4 Sec. Corner, Secs. 16 & 17.
 Set 1" G.I.P. with Brass Cap, marked
 County Surveyor's Office. 1/4 Sec. 16-17-T26S. R4W.
 Bearing trees as shown.

1/4 Sec. Cor. Secs. 15-16
 Set 1" G.I.P. with Brass
 Cap, marked County Surveyor's
 Office, 1/4 Sec. 15-16-T26S., R4W.

Note: All Bearings calculated from angles turned in
 deflection from meridian established by solar obser-
 vation taken during course of survey for "Whistler's Homes,
 Plat "A"

The following corners on Section 16 have been obliterated; S 1/4 Sec. cor., North 1/4
 Sec. cor., N.E. corner, and S.W. corner. Their replacement by proportional measure-
 ment would necessitate the surveying of a minimum of 5 1/2 miles of additional
 line, and it is highly probable that the resultant locations would be at considerable
 variance with the original locations. After careful computations, and consultation
 with interested property owners, the center 1/4 Sec. corner of Section 16 was placed
 at the midpoint of the direct line between the east and West 1/4 Section corners
 as most nearly conforming to the original subdivision of this section as shown
 by the official plat. The subdivisional lines of Lots 7 and 8 were projected North
 from the proper points located on the East and West center line of said section.

FOR J. M. HOUSLEY
 SEC. 16-17-43