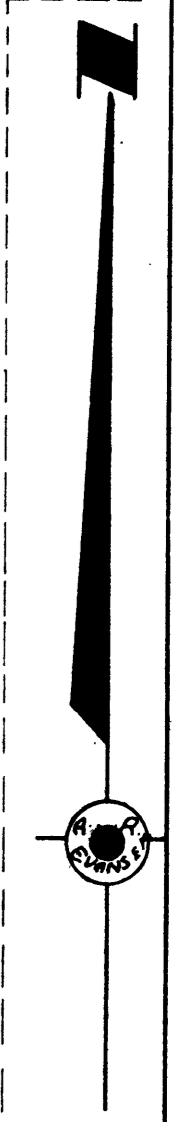
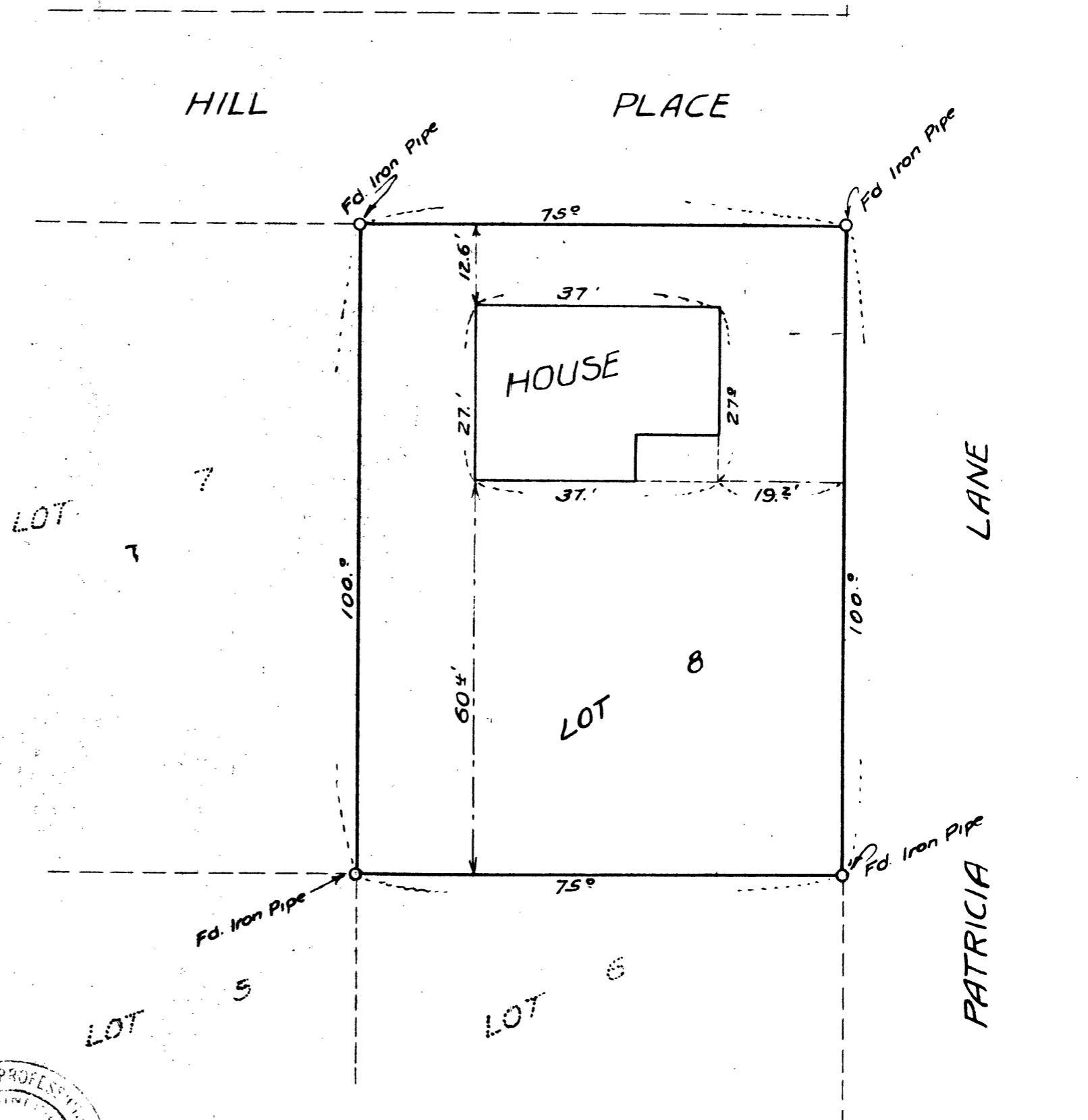


COUNTY SURVEYORS FILE DATA
DO NOT REMOVE FROM OFFICE



OFFICE OF THE COUNTY SURVEYOR
DOUGLAS COUNTY OREGON
MAP SHOWING LOCATION OF RESIDENCE
IN REFERENCE TO LOT LINES
LOT 8, BLOCK 3, RONALD HEIGHTS

BEN B. IRVING COUNTY SURVEYOR
SURVEYED AND PLATTED 6-23-48 BY
A. R. EVANS DEPUTY
SCALE 1 in. = 20 ft.

