

COUNTY SURVEYORS FILE DATA
DO NOT REMOVE FROM OFFICE

COUNTY SURVEYOR'S OFFICE
DOUGLAS COUNTY OREGON

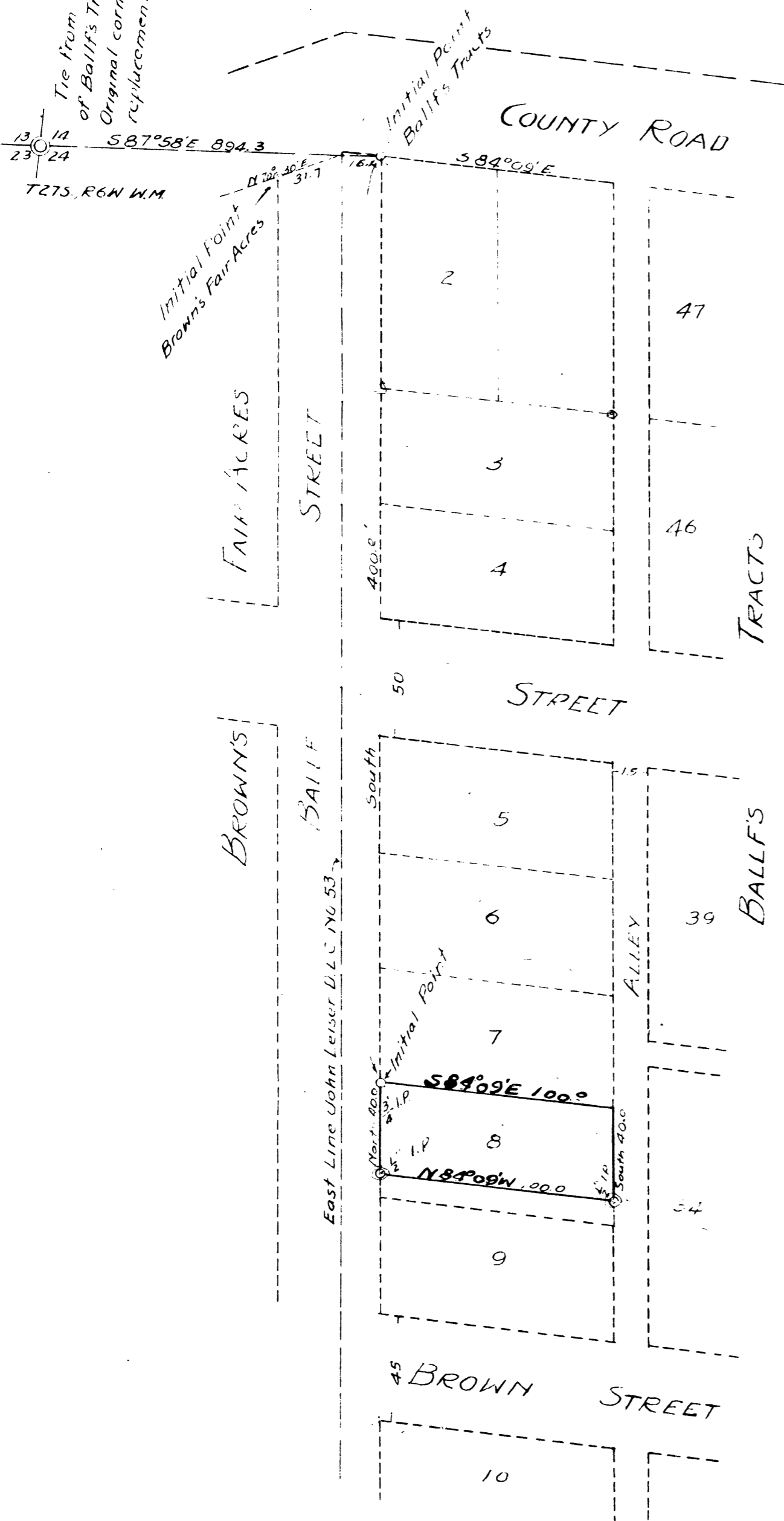
SURVEY OF SMALL PARCEL OF LAND IN THE NW 1/4
OF THE NW 1/4 SECTION 24 T27S, R6W, WIL. MER.

(PART OF BALLIF TRACTS)

BEN B. IRVING COUNTY SURVEYOR
SURVEYED DEC. 18, 1946 BY
H.E. RICHARDSON DEPUTY.
SCALE 1" = 50'

H.E. Richardson

Tie from Section Corner to NW corner
of Ballif's Tracts taken from Deed Records
Original corner has been destroyed and cost of its
replacement is not justified in this survey



DEED DESCRIPTION

Beginning at a point which is a 3/4" Iron Pipe in the East line of Ballif Street and which is S87°58'E 894.3 ft. and South 400.0 ft. from the corner of Sections 13-14-23-24, T27S, R6W, W.M.
Thence S84°09'E 100.0 ft. Thence South 40.0 ft. to a 1/2" Iron Pipe Thence N84°09'W 100.0 ft. to a 1/2" Iron Pipe in the East line of Ballif Street Thence North 40.0 ft. along the East line of Ballif Street to the place of beginning containing 0.092 acres more or less in the NW 1/4 of the NW 1/4 Section 24 T27S, R6W, Wil. Mer.
(Note: This description is of the North 40 ft. of Tract No. 8 of Ballif's Tracts which were never officially platted or filed.)



The numbers of the tracts listed herein are for reference and are those applied by Ballif at the time the tract was broken up and sold as small units. It has never been officially platted or filed.

Drawn by A. R. Evans 12/12/46