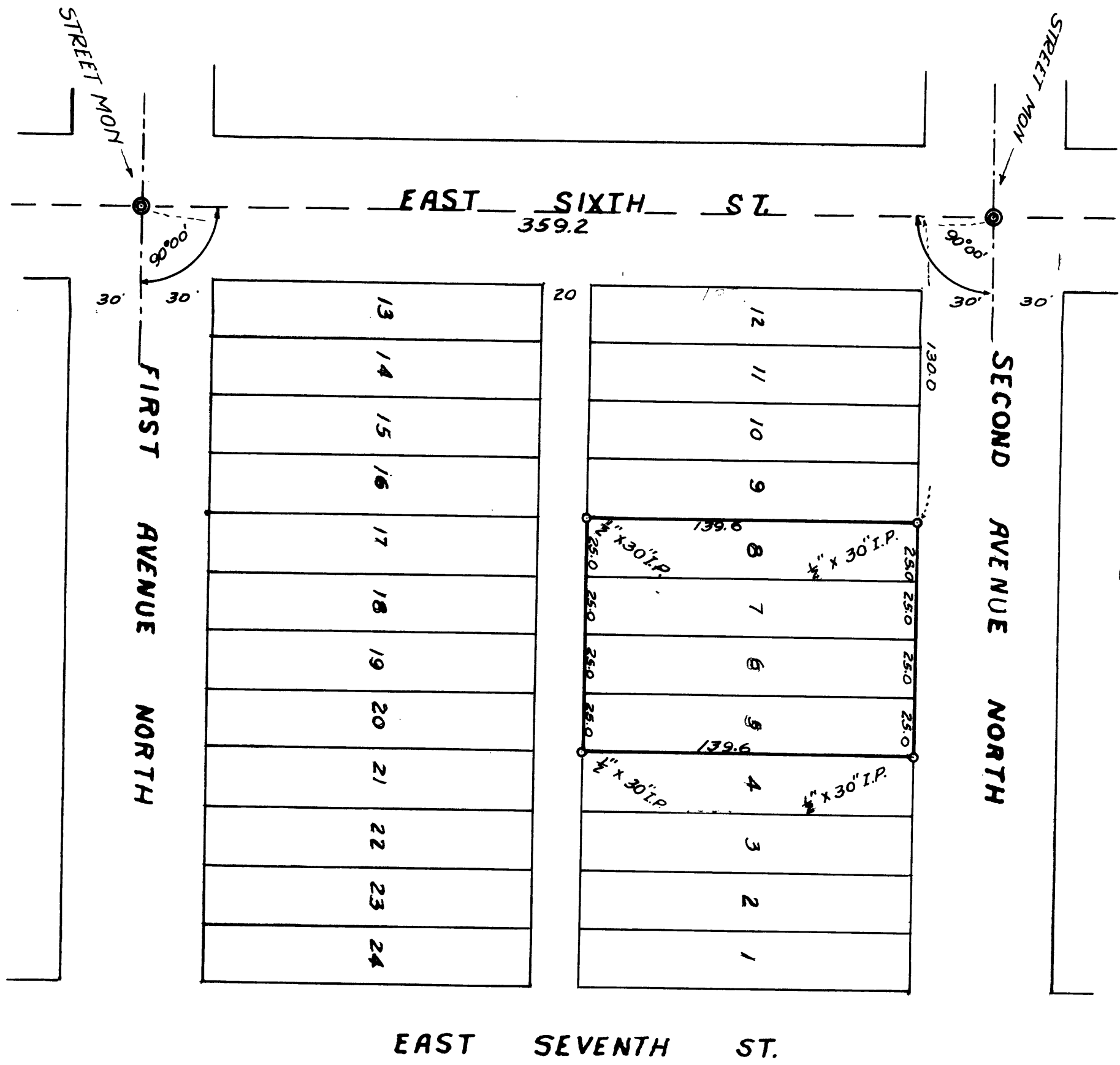


COUNTY SURVEYORS FILE DATA
DO NOT REMOVE FROM OFFICE

COUNTY SURVEYOR'S OFFICE
DOUGLAS COUNTY OREGON
SURVEY OF LOTS 5-6-7-8-BLOCK 36
KINNEY'S ADDITION TO ROSEBURG

BEN B. IRVING COUNTY SURVEYOR
SURVEYED DEC. 27 1946 BY
N.E. RICHARDSON DEPUTY
SCALE 1" = 50'



REGISTERED
OREGON
LAND SURVEYOR
N.E. Richardson
JULY 7, 1944
N. E. RICHARDSON
35