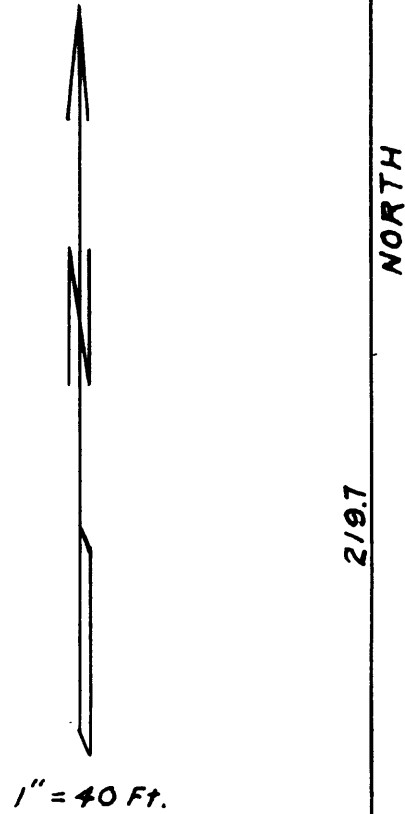


COUNTY SURVEYOR'S OFFICE
DOUGLAS COUNTY OREGON

JOHN ALEXANDER TO CARL MESSING
SECTION 18 T 26S. R 3W, WM.

BEN. B. IRVING County Surveyor
N.E. RICHARDSON Deputy County Surveyor
Sept. 17, 1946
SCALE 1" = 40'



NORTH
219.7

REGISTERED
OREGON
LAND SURVEYOR
N.E. Richardson
JULY 7, 1944
N. E. RICHARDSON
35

SEC. 18
SEC. 19
RIFLE BARREL
1/4 Section Corner.

COUNTY SURVEYORS FILE DATA
DO NOT REMOVE FROM OFFICE