

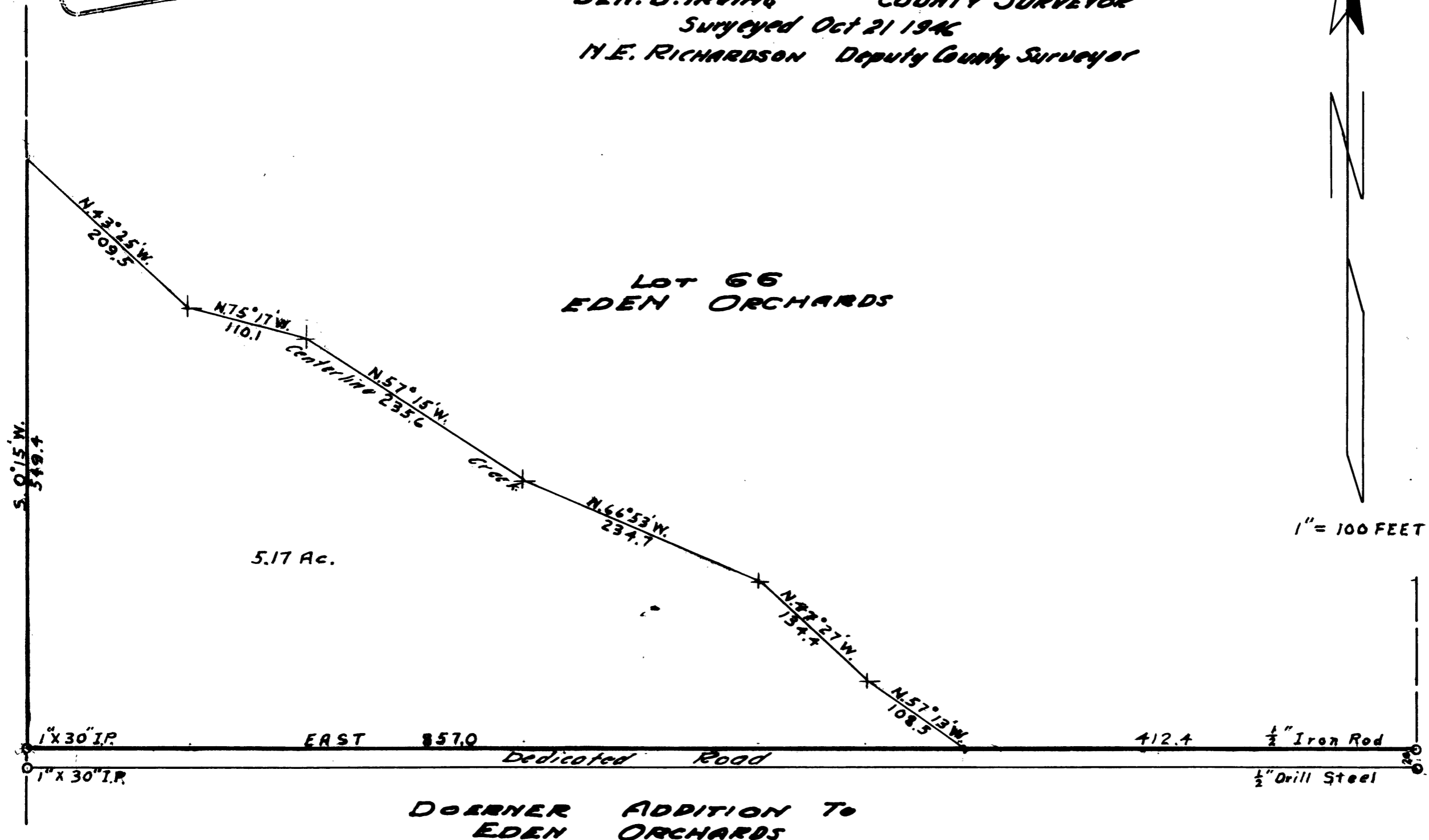
COUNTY SURVEYORS FILE DATA  
DO NOT REMOVE FROM OFFICE

COUNTY SURVEYOR'S OFFICE  
DOUGLAS COUNTY OREGON

PART OF LOT 66 EDEN ORCHARDS  
SEC. 4 T27S, R7W, WM.

BEN. B. IRVING COUNTY SURVEYOR  
Surveyed Oct 21 1946  
N.E. RICHARDSON Deputy County Surveyor

REGISTERED  
OREGON  
LAND SURVEYOR  
N.E. Richardson  
JULY 7, 1944  
N. E. RICHARDSON  
35



DOERNER ADDITION TO  
EDEN ORCHARDS

P