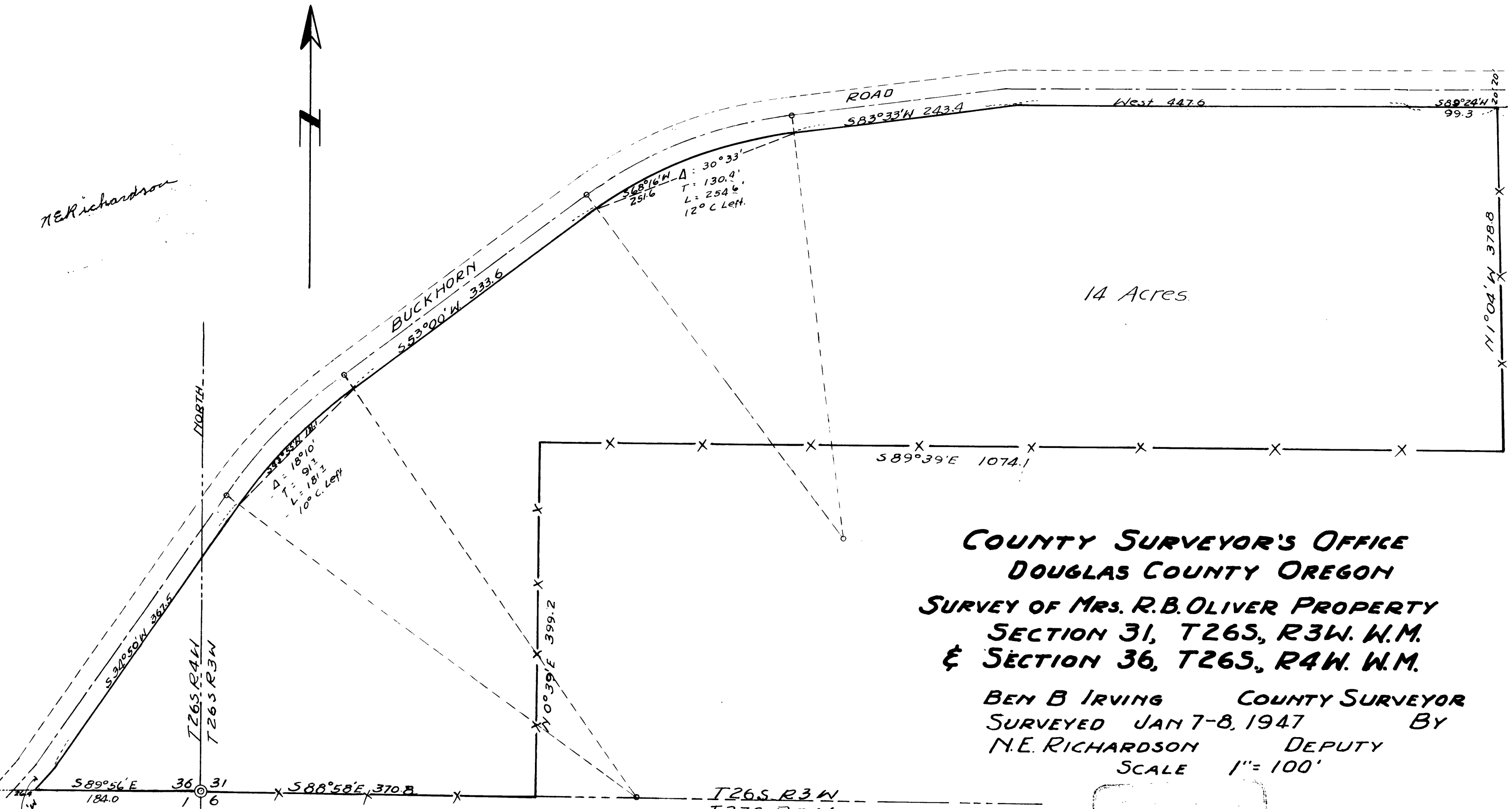
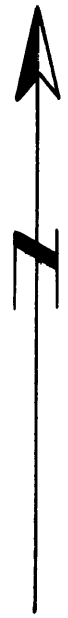


N.E. Richardson

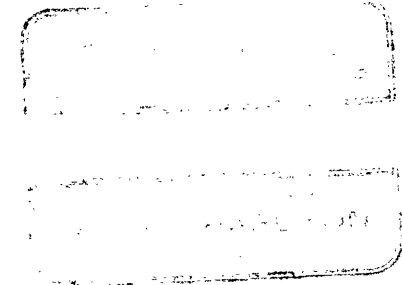


14 Acres

COUNTY SURVEYOR'S OFFICE
DOUGLAS COUNTY OREGON
SURVEY OF MRS. R.B. OLIVER PROPERTY
SECTION 31, T26S, R3W. W.M.
& SECTION 36, T26S, R4W. W.M.

BEN B IRVING COUNTY SURVEYOR
SURVEYED JAN 7-8, 1947 BY
N.E. RICHARDSON DEPUTY
SCALE 1" = 100'

COUNTY SURVEYORS FILE DATA
DO NOT REMOVE FROM OFFICE



DRAWN BY A.R. EVANS 1/15/47