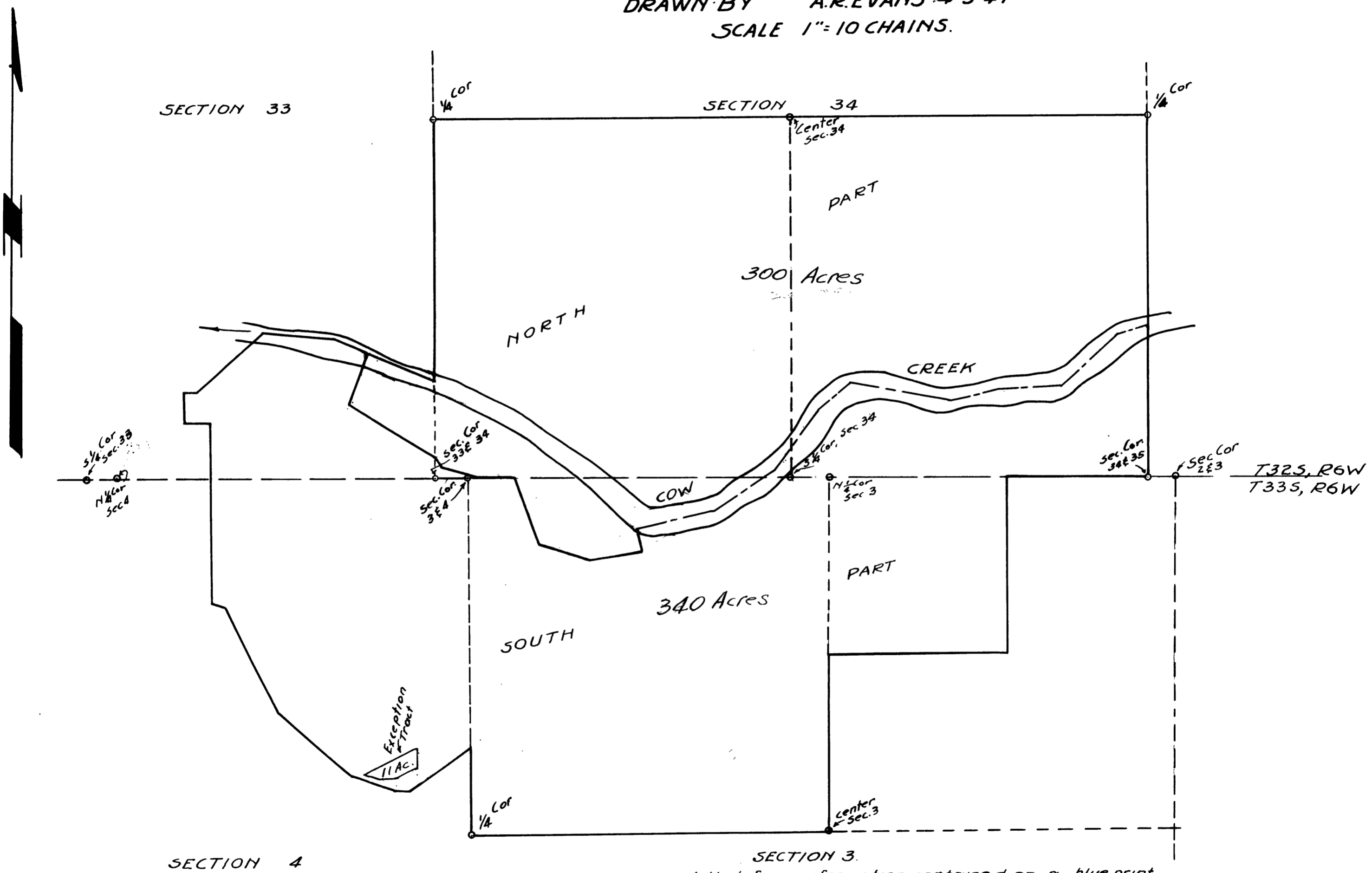


COUNTY SURVEYOR'S OFFICE  
 DOUGLAS COUNTY OREGON  
 SETHER RANCH  
 SECS. 33 & 34, T32S, R6W, SECS. 3 & 4, T33S, R6W, W.M.  
 BEN B. IRVING COUNTY SURVEYOR  
 DRAWN BY A.R. EVANS - 4-3-47  
 SCALE 1" = 10 CHAINS.



Note: This map was platted from information contained on a blue print map and from other data furnished by Mr Carl J. Sether. No survey was made, and the accuracy of this map can only be that of the information furnished.