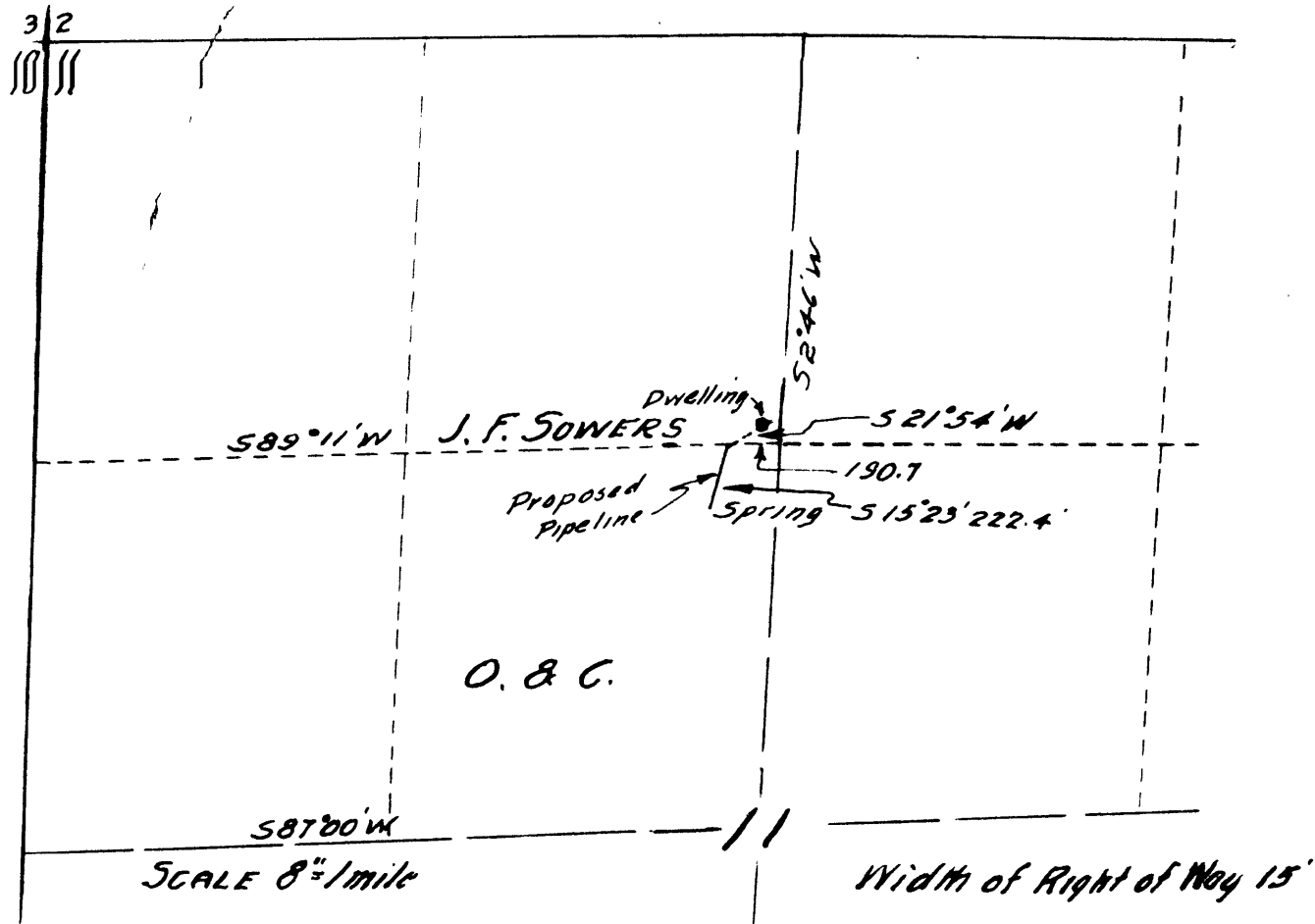


PART OF
SECTION 11
T 27 S - R 3 W
W.M.



SCALE 8"=1 mile

Width of Right of Way 15'



DESCRIPTION OF RIGHT OF WAY
Beginning at a point on the NORTH boundary
of the SE 1/4 NW 1/4 SEC. 11 T 27 S, R 3 W, W.M., 589°11'W
190.7 ft. from the NE corner thereof; Thence
521°54'W 3.0 ft.; Thence 515°23'W 222.4 ft. to
a spring.

BEN B. IRVING, being duly sworn says that he was employed by
J.F. SOWERS to make the survey represented on the accompanying map
that the pipeline right of way so represented is accurately on this map.

Subscribed and Sworn to before me this 27th day of July 1945
Roy Cole
County Clerk

OFFICE OF THE COUNTY SURVEYOR
DOUGLAS COUNTY OREGON
PROPOSED RIGHT OF WAY
J.F. SOWERS PIPELINE
SE 1/4 NW 1/4 SEC 11 T 27 S, R 3 W W.M.
BEN. B. IRVING COUNTY SURVEYOR.
JULY 1945

CS 38/224-2