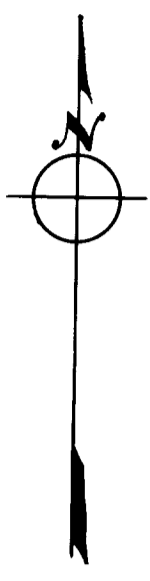


31 32 T. 31 S.  
6 5 T. 32 S.  
1" Iron Pipe

6" Chin. N. 44° 26' W. 9.0 ft.  
7" Chin. N. 45° 00' E. 42.6  
7" Madrona S. 47° 00' E. 22.2  
7" Madrona S. 45° 55' W. 26.5

1320.0

10" Fir N. 31° 15' E. 20.0  
10" Fir S. 21° 25' E. 15.6  
1" Iron Pipe



COUNTY SURVEYORS FILE DATA  
DO NOT REMOVE FROM OFFICE

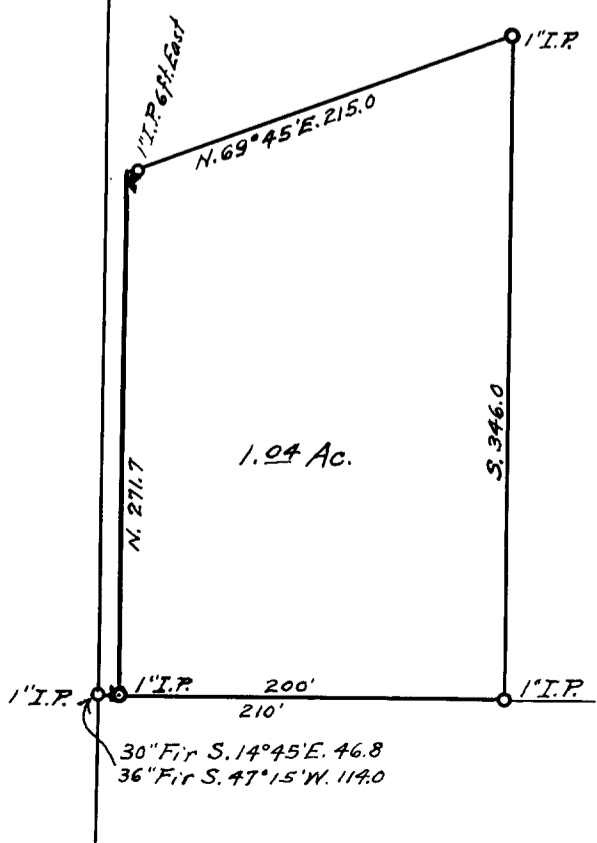
COUNTY SURVEYOR'S OFFICE  
DOUGLAS COUNTY, OREGON  
Survey for  
Halbert Booth  
Section 5, T. 32 S., R. 4 W., W.M.  
May 1946 Scale 1" = 100 ft.

1320.0

REGISTERED  
OREGON  
LAND SURVEYOR

*Geo. J. Wenderoth*

MARCH 10, 1944  
George J. Wenderoth  
5



FILED  
RECEIVED

DEC 30 1947

COUNTY SURVEYOR  
DOUGLAS COUNTY, OREGON