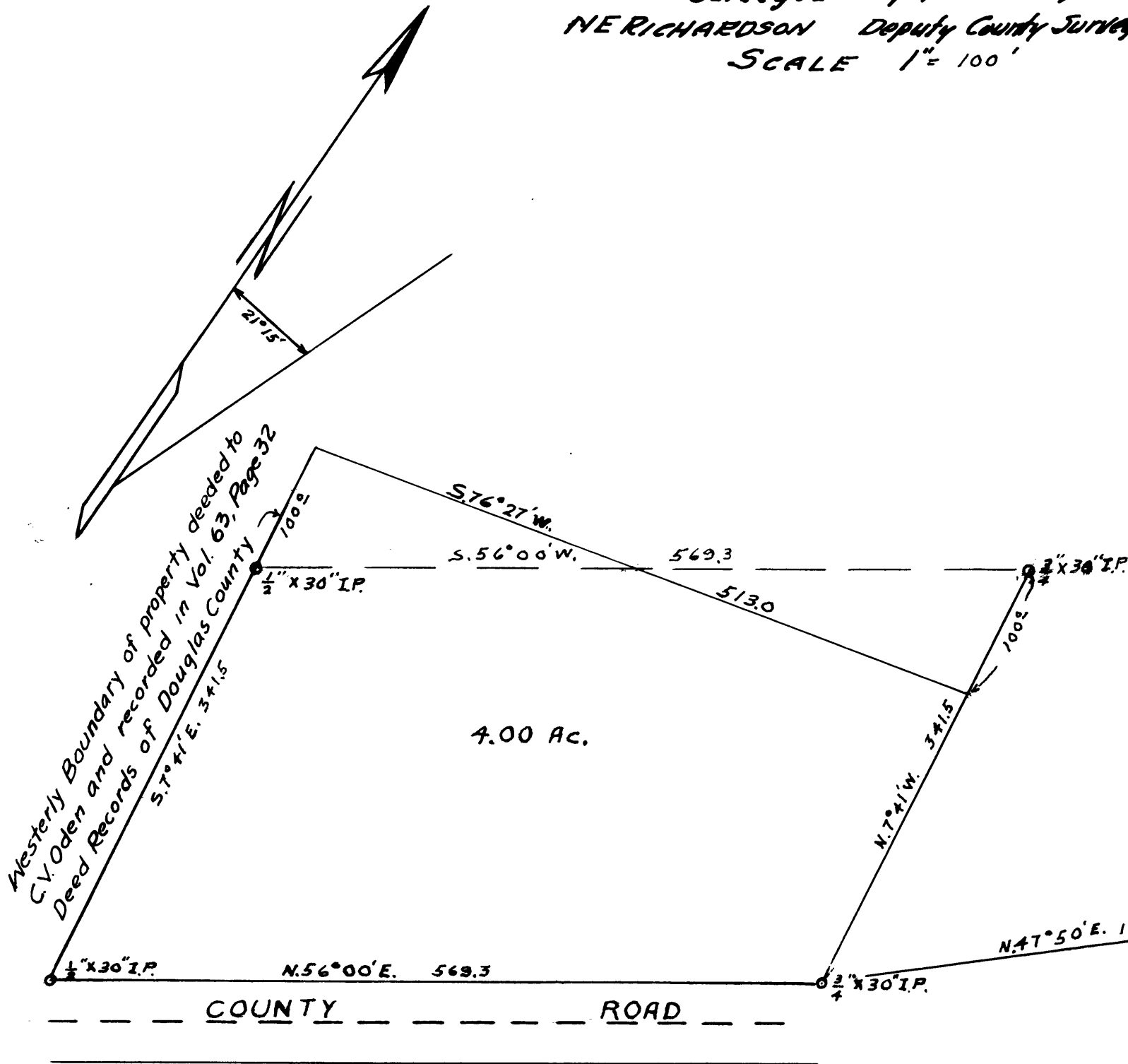


COUNTY SURVEYOR'S OFFICE
DOUGLAS COUNTY OREGON

COUNTY SURVEYORS FILE DATA
DO NOT REMOVE FROM OFFICE

SMALL TRACT
SECTION 22 T27S R4W WM

BEN. B. IRVING County Surveyor
Surveyed Sept. 10 1946 by
N.E. RICHARDSON Deputy County Surveyor
SCALE 1" = 100'



REGISTERED
OREGON
LAND SURVEYOR
N.E. Richardson
JULY 7, 1944
N. E. RICHARDSON
35