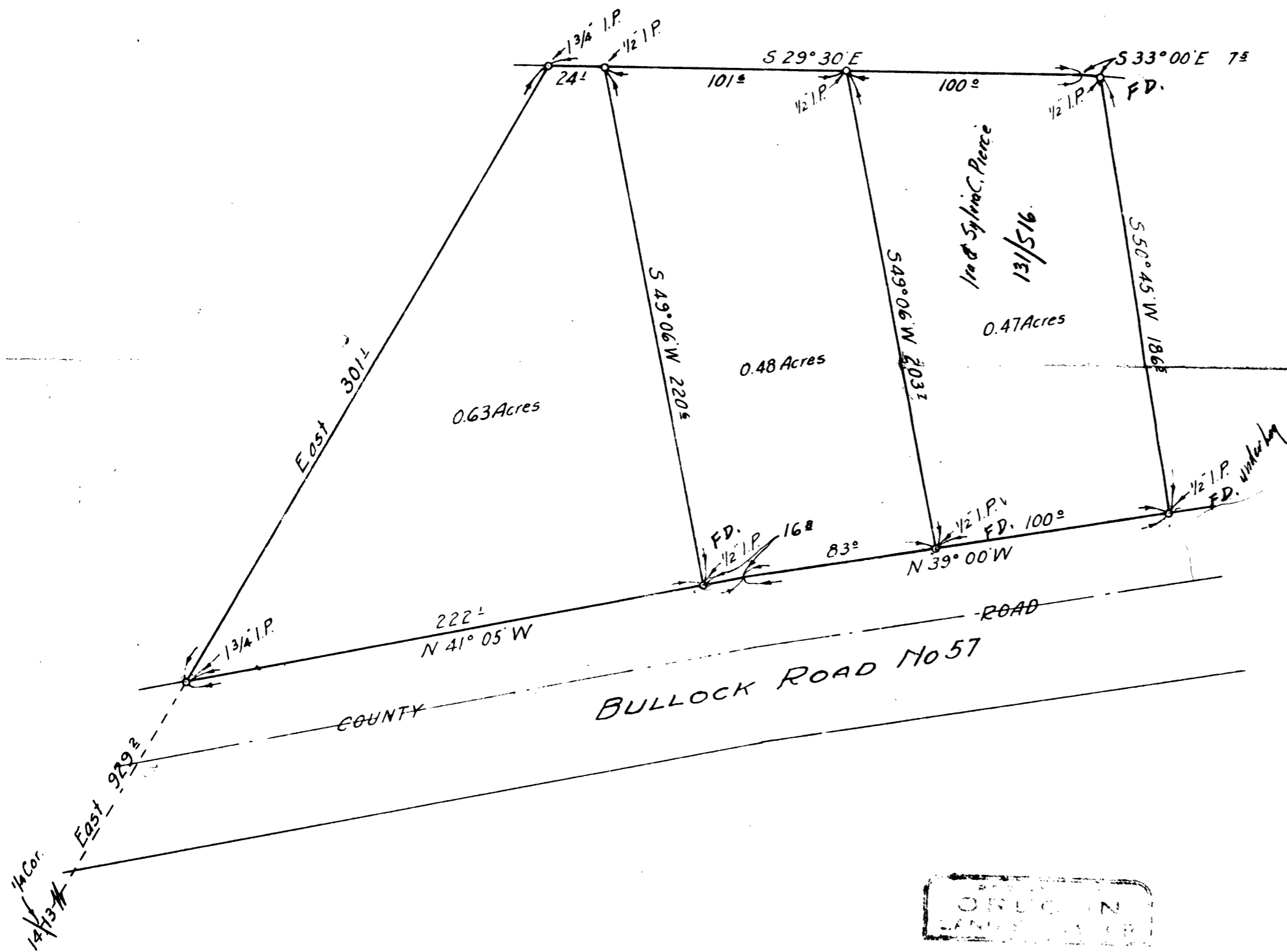


Umpqua River



OREGON
 LAND SALES
 N.E. Richardson
 N.E. RICHARDSON
 35

COUNTY SURVEYOR'S OFFICE
DOUGLAS COUNTY, OREGON

SURVEY OF
SMALL TRACTS IN LOT 7,
SECTION 13, T24S, R7W, W.M.

BEN. B. IRVING COUNTY SURVEYOR.
SURVEYED BY
N.E. RICHARDSON DEPUTY COUNTY SURVEYOR.
SCALE 1" = 50'
AUGUST 12, 1946.

F.M.D.

C.S. File No. 38207-1