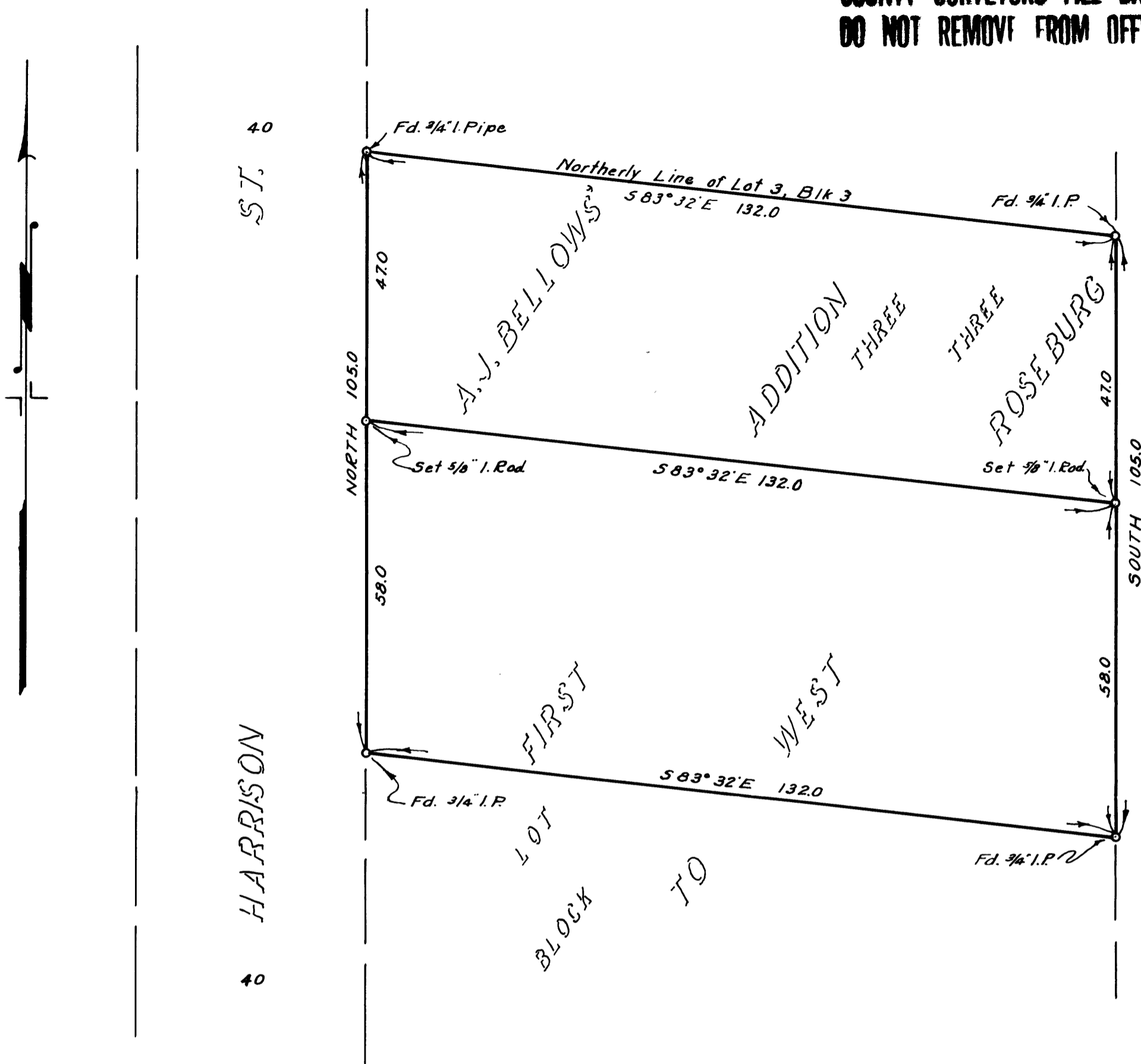


COUNTY SURVEYORS FILE DATA
DO NOT REMOVE FROM OFFICE



N.E. Richardson

COUNTY SURVEYOR'S OFFICE
DOUGLAS COUNTY, OREGON.

SURVEY FOR DEED DESCRIPTION,
IN WEST ROSEBURG.

BEN. B. IRVING
SURVEYED JANUARY 25, 1949
N.E. RICHARDSON

COUNTY SURVEYOR
BY
DEPUTY

SCALE 1" = 20'