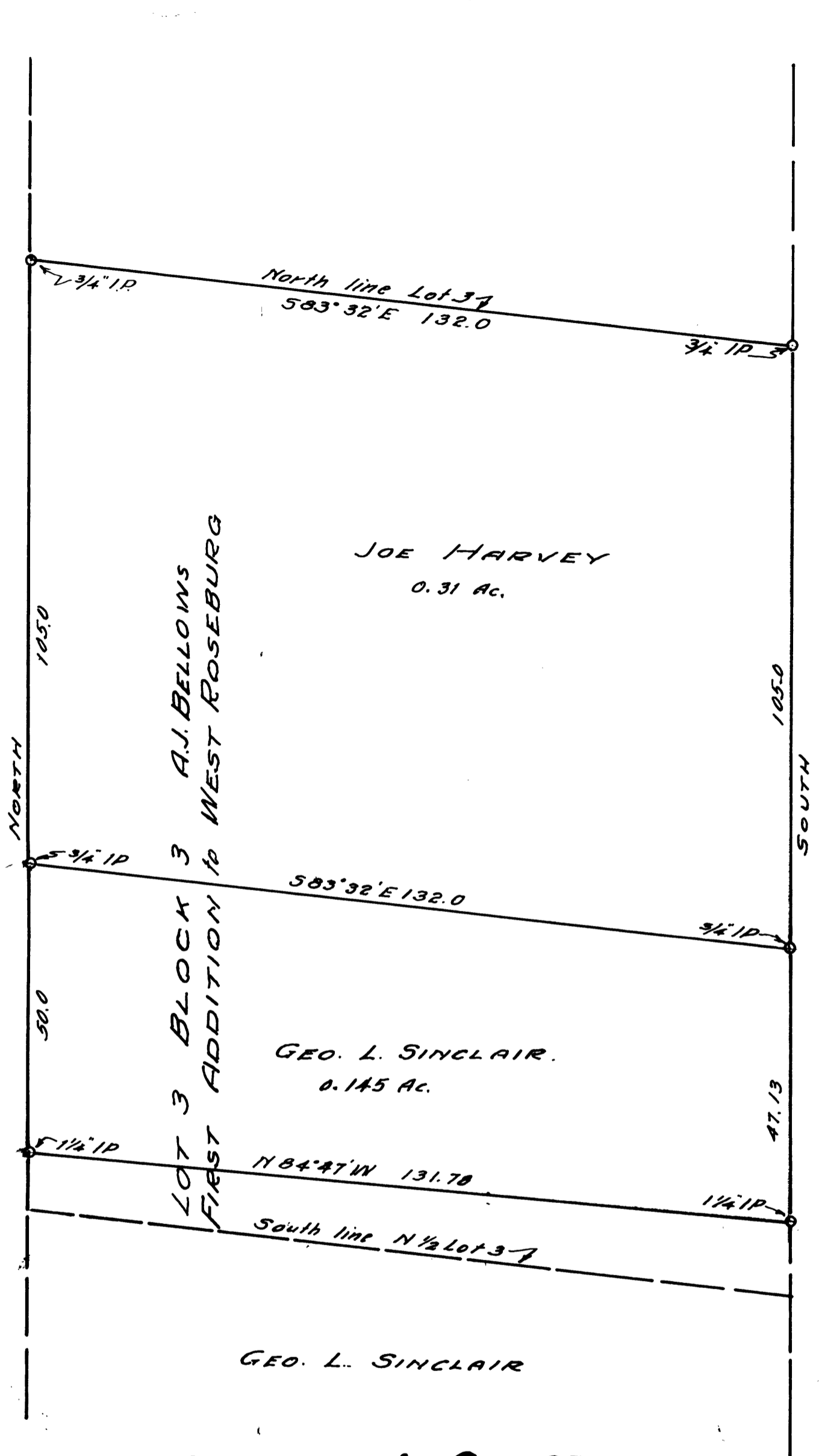


HARRISON STREET



COUNTY SURVEYOR'S OFFICE
DOUGLAS COUNTY OREGON

NORTH 1/2 LOT 3 BLOCK 3
A.J. BELLOWS, FIRST ADDITION
TO WEST ROSEBURG

BEN. B. IRVING County Surveyor.
Surveyed August 1946



COUNTY SURVEYORS FILE DATA
DO NOT REMOVE FROM OFFICE

SCALE 1" = 20'

CS 38/205-2

P FILE 205 DRAWER 38