

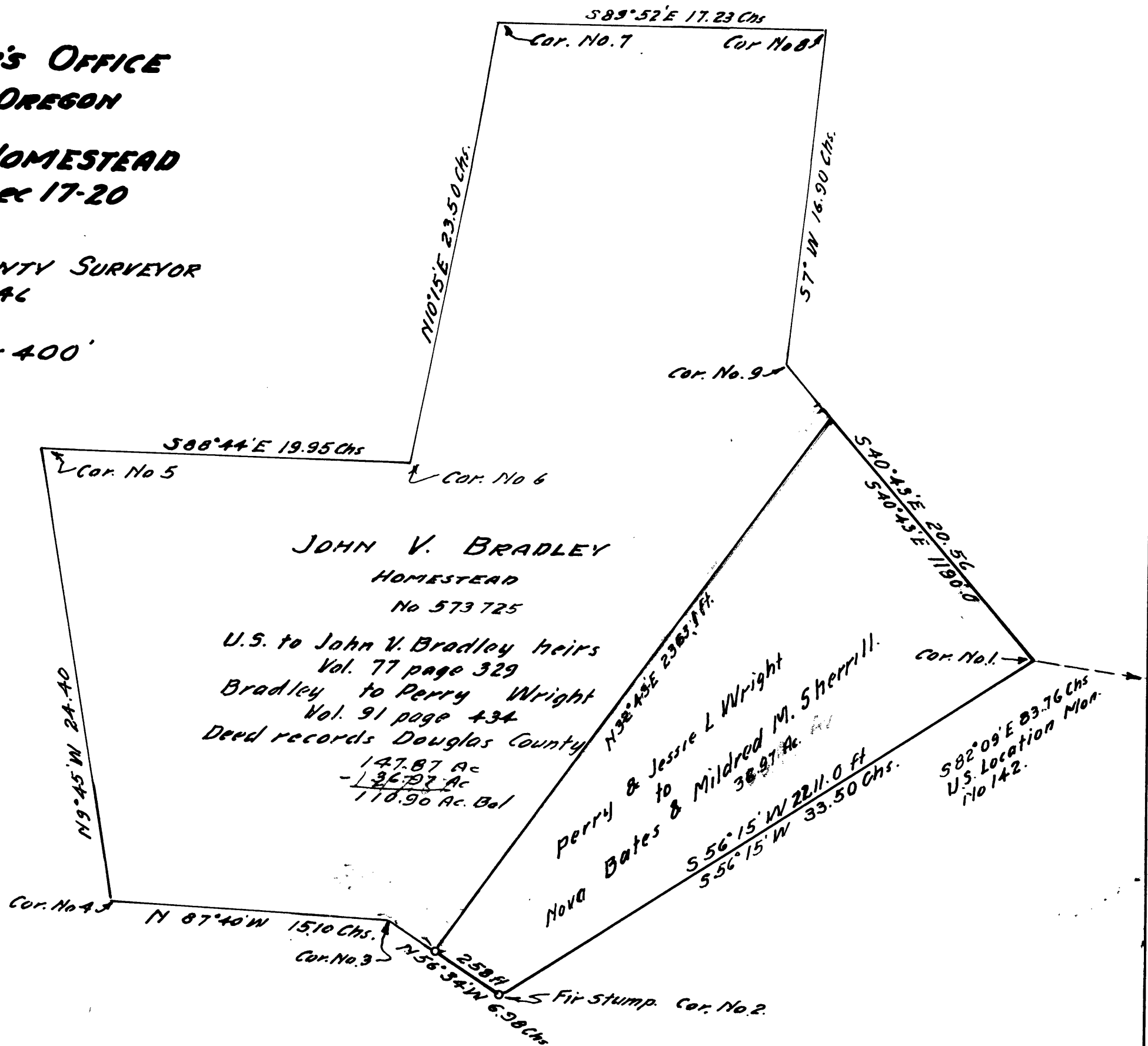
**COUNTY SURVEYOR'S OFFICE
DOUGLAS COUNTY OREGON**

**JOHN V. BRADLEY HOMESTEAD
T26S R2E W.M. Sec 17-20**

**BEN. B. IRVING, COUNTY SURVEYOR
AUGUST 31 1946**

SCALE 1" = 400'

NOTE: This map was prepared from data contained in the deeds quoted thereon and not from a field survey.



**JOHN V. BRADLEY
HOMESTEAD
No 573 725**

U.S. to John V. Bradley heirs
Vol. 77 page 329
Bradley to Perry Wright
Vol. 91 page 434
Deed records Douglas County

147.87 Ac
- 36.97 Ac
110.90 Ac. Bal

Perry & Jessie L Wright
Nova Bates & Mildred M. Sherrill.

36.97 Ac.

C.S. File No 38/201-3