

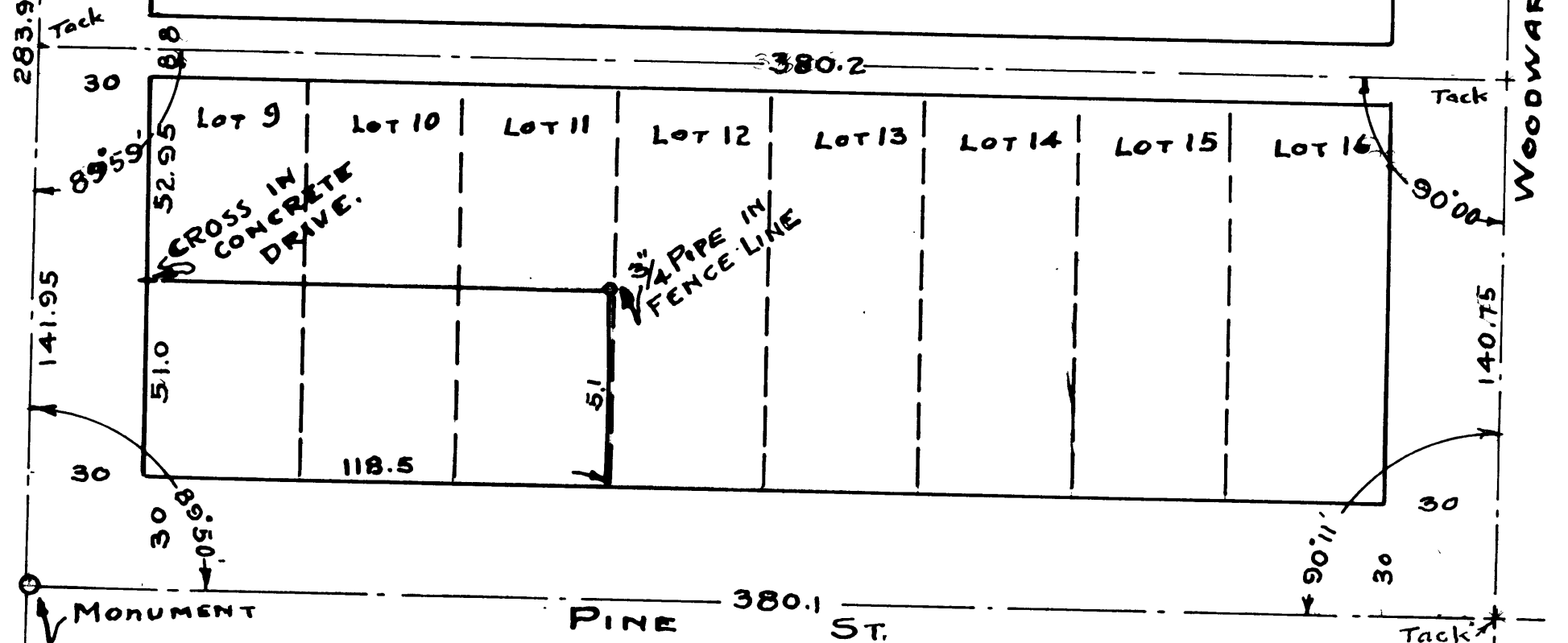
COUNTY SURVEYORS FILE DATA
DO NOT REMOVE FROM OFFICE

STEPHENS ST.

WEST 51 FT LOTS 9-10-11
BLOCK 71 ROSE'S 1ST SOUTHERN ADD'N. TO
ROSEBURG OREGON
SURVEYED OCT. 16, 1944. BY
BEN. B. IRVING
Registered Civil Engineer
ROSEBURG, OREGON.

283.9 MOSHER ST.
141.95

WOODWARD ST.
140.75



SCALE 1" = 40'
FILE NO. 38/183