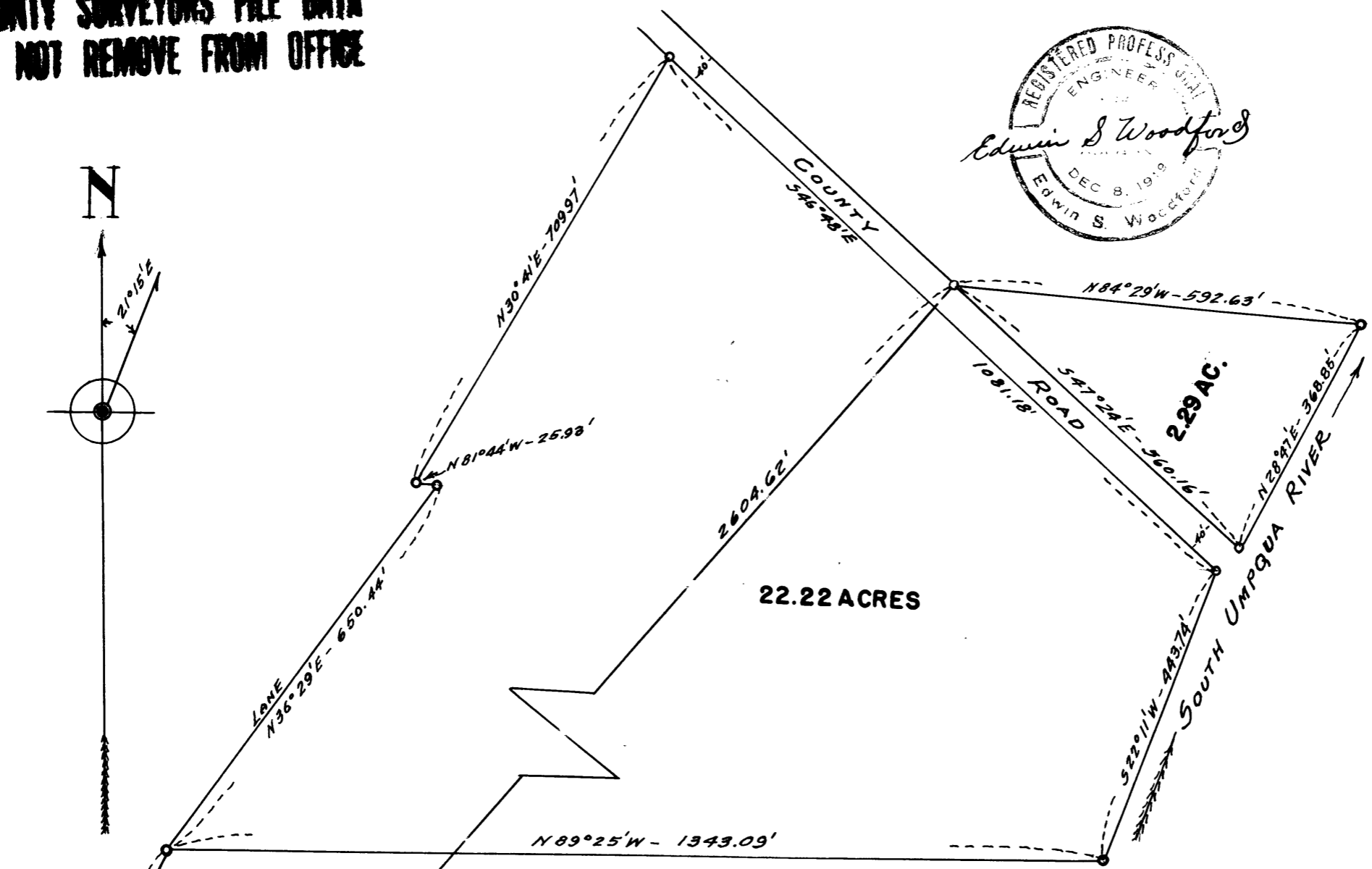
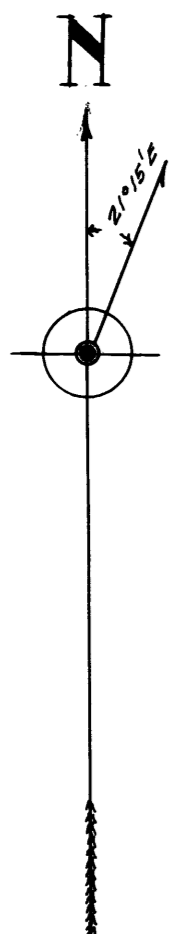


COUNTY SURVEYORS FILE DATA  
DO NOT REMOVE FROM OFFICE



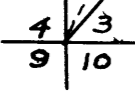
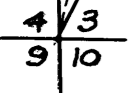
C.S. 38/29



22.22 ACRES

MAP  
OF  
TRACTS OF LAND  
IN  
SECTION-3 T.P. 28S-RG. 6W WM.  
SCALE-1"=200'

FILED  
RECEIVED  
JUL 5 1951  
COUNTY SURVEYOR  
DOUGLAS COUNTY, ORE.



FOR LYLE MARSTERS

P