

Note  
Traced from photostat  
obtained from County Surveyor's  
office.

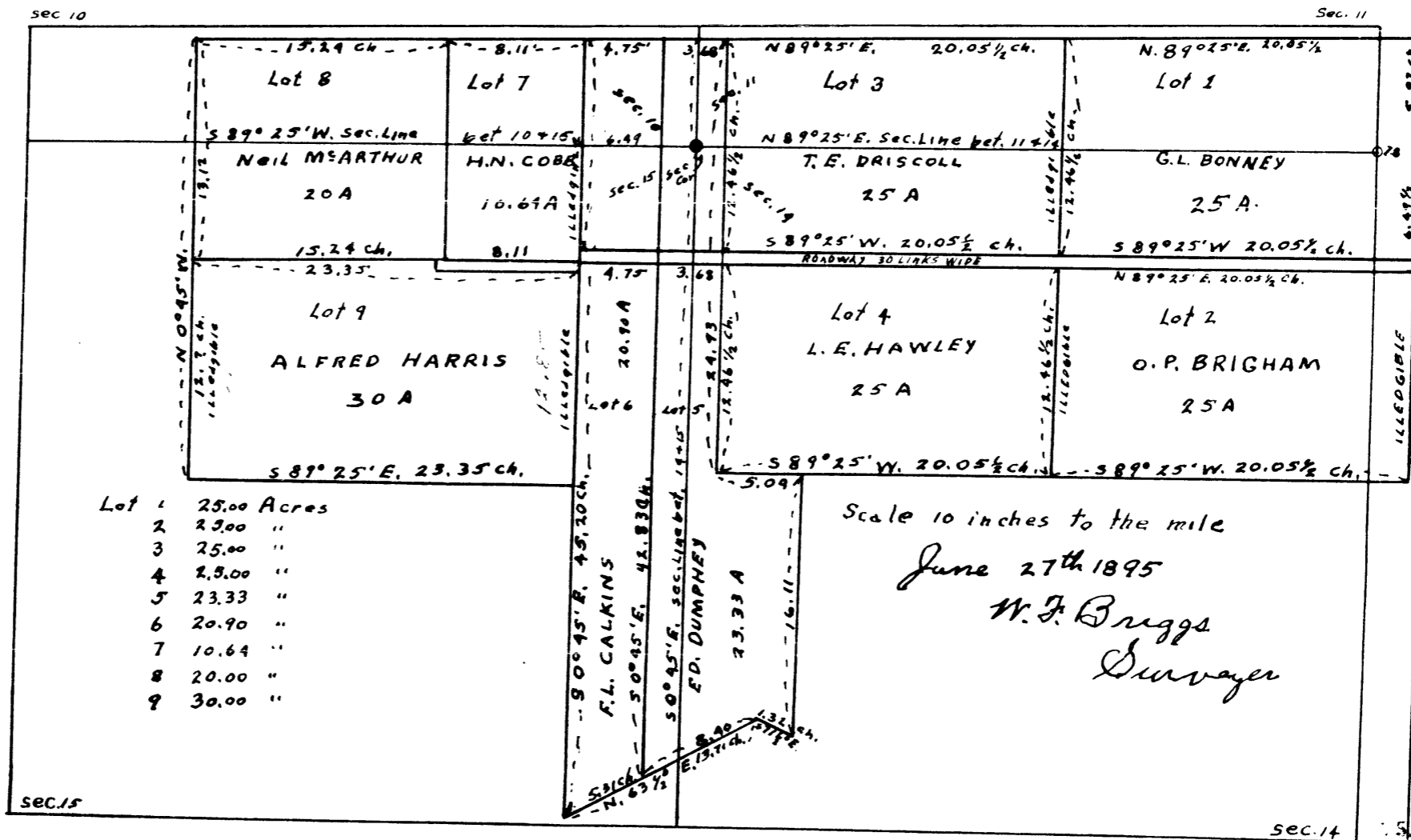
Feb. 1960  
Scale 10" = 1 mile  
1" = 528 Ft.  
Traced By W.E.C.

# Plat of Umpqua Fruit Ranch

Township 27 South Range 6 West W.M. Oregon

Deed Rec. Vol. 33 Page 252

Survey File 38/128



County of Umpqua City of E.C.C. 1/31/74