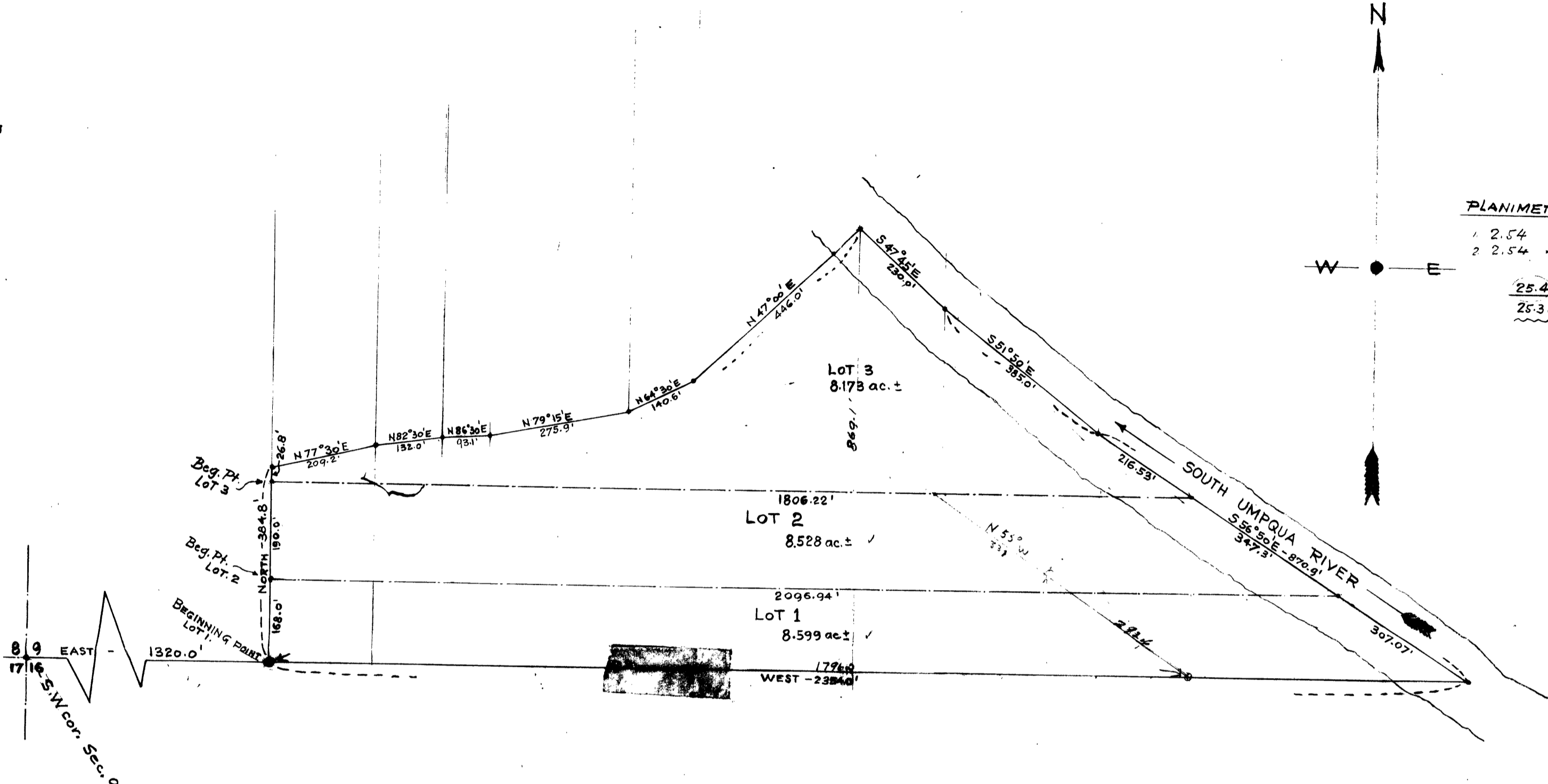


PLANIMETER READING

- 1 2.54
- 2 2.54 x 10.0 constant

25.4 ac. total ±
25.3 ac.



Traverse Notes

SCALE: 1" = 200 ft.

	cos.	N	S	Am	E	W
North	384.8	384.80				
N 77° 30' E	209.2	2164	45.27	9763	204.24	✓
N 82° 30' E	132.0	1305	17.23	9914	130.86	✓
N 86° 30' E	93.1	0610	5.68	9981	92.92	✓
N 79° 15' E	275.9	1865	51.45	9824	271.04	✓
N 64° 30' E	140.6	4305	60.53	9026	126.91	✓
N 47° 00' E	446.0	6820	304.17	7314	326.20	✓
S 47° 45' E	230.0	6724	154.65	7402	170.25	✓
S 51° 50' E	385.0	6180	237.93	7862	302.69	✓
S 56° 50' E	870.9	5471	476.47	8371	729.03	✓
West	2354.0					2354.00
		869.13	869.05		2354.14	

R. E. MUIR and Marion B. MUIR

Located in Sec. 9, T. 28 S., R. 6 W., W.M., DOUGLAS COUNTY, ORE.

File 1.5301

April - 24, 1946

**COUNTY SURVEYORS FILE DATA
DO NOT REMOVE FROM OFFICE**