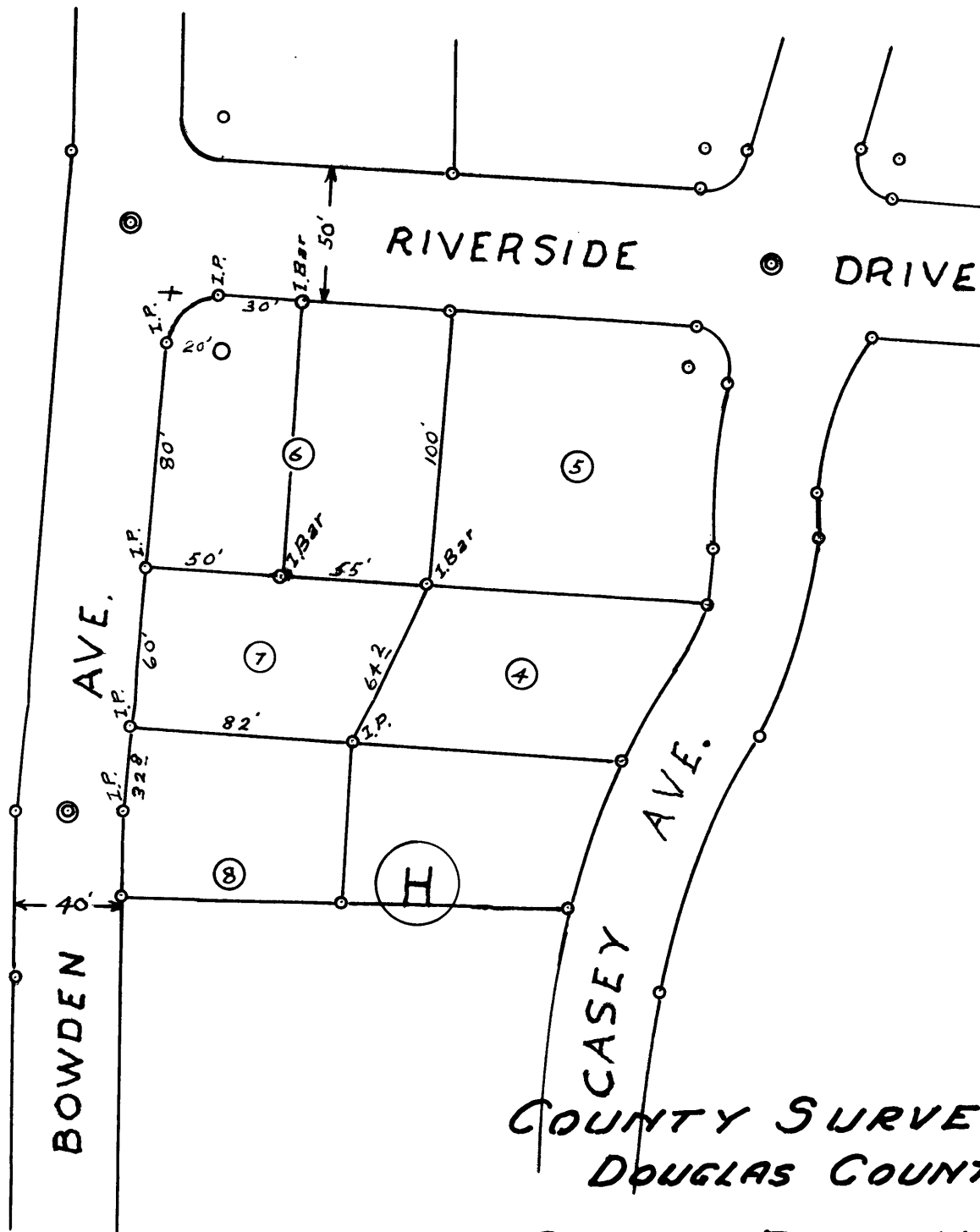


REGISTERED  
OREGON  
LAND SURVEYOR

*N.E. Richardson*

JULY 7, 1944  
N. E. RICHARDSON  
35



COUNTY SURVEYOR'S OFFICE  
DOUGLAS COUNTY OREGON.

PART OF BLOCK H LAURELWOOD ADDN.  
ROSEBURG OREGON.

COUNTY SURVEYORS FILE DATA  
DO NOT REMOVE FROM OFFICE

BEN. B. IRVING COUNTY SURVEYOR.  
Surveyed MARCH 4 1946 by  
N.E. RICHARDSON Deputy County Surveyor.

Scale 1"=60'