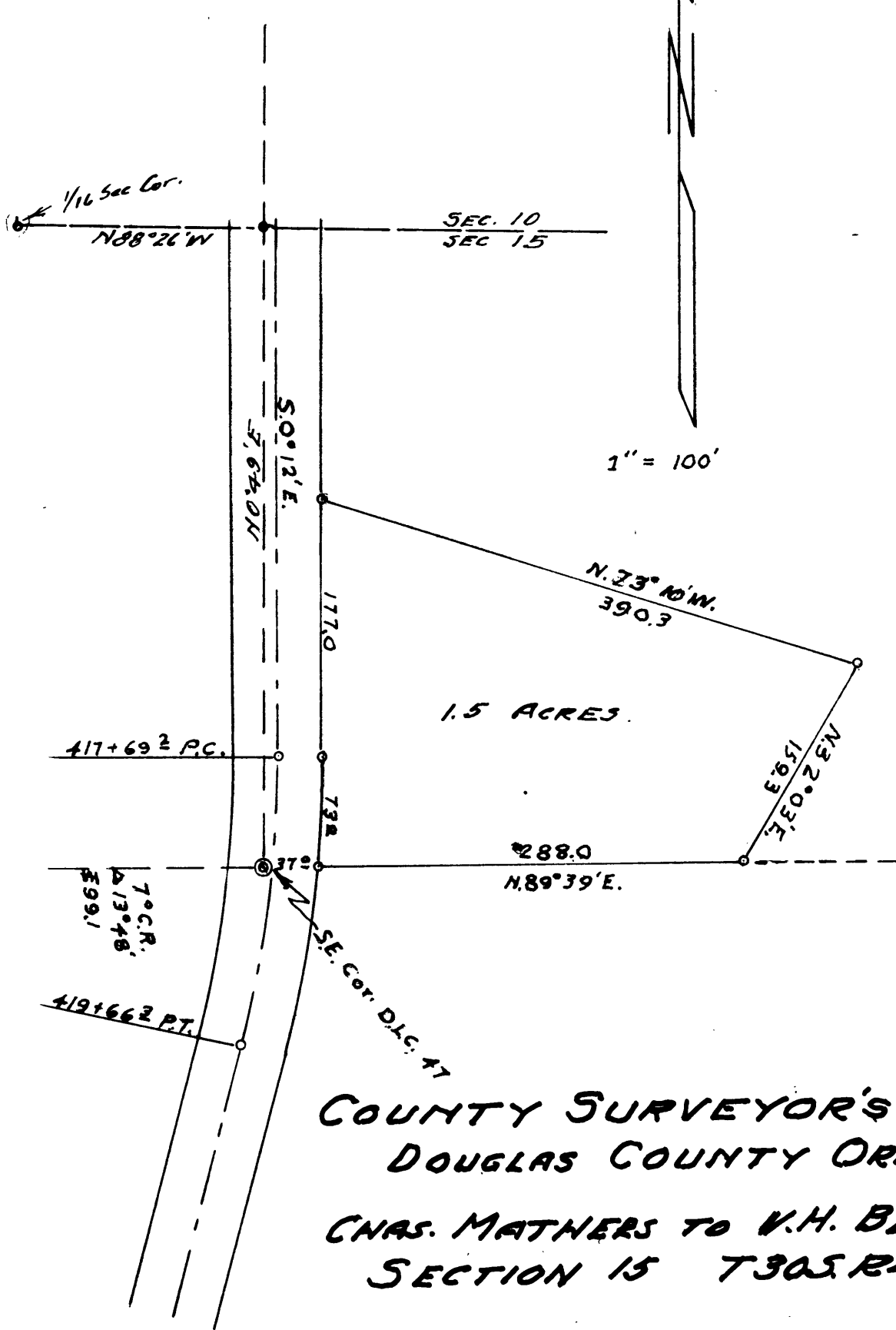


COUNTY SURVEYORS FILE DATA  
DO NOT REMOVE FROM OFFICE



COUNTY SURVEYOR'S OFFICE  
DOUGLAS COUNTY OREGON  
CHAS. MATHERS TO V.H. BENNETT  
SECTION 15 T30S R4W W.M.

BEN. B. IRVING COUNTY SURVEYOR  
SURVEYED Jan. 28 1946 by  
N. E. RICHARDSON Deputy Co. Surveyor.

CS. 38/74-2