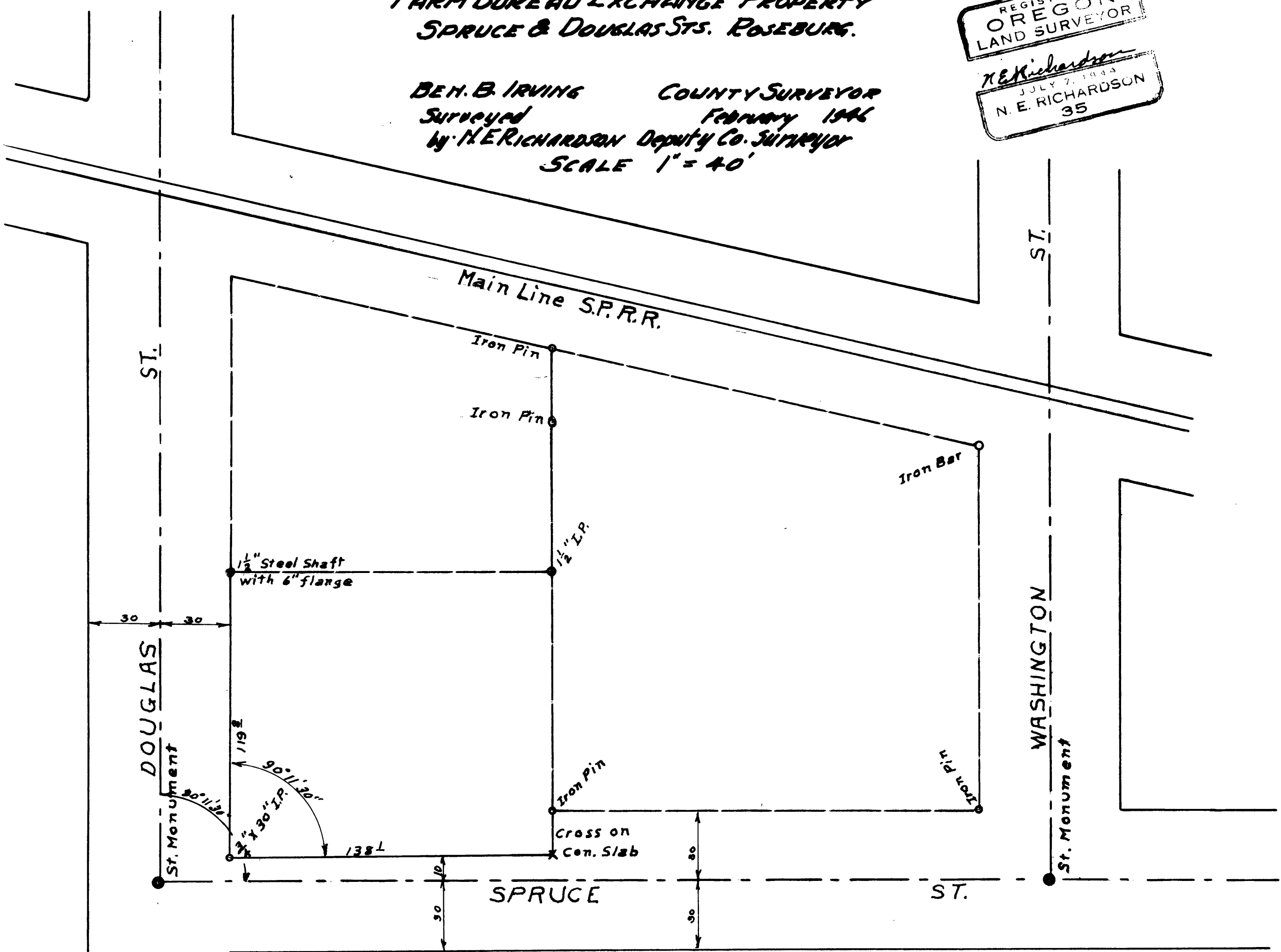


COUNTY SURVEYOR'S OFFICE
DOUGLAS COUNTY OREGON.

FARM BUREAU EXCHANGE PROPERTY
SPRUCE & DOUGLAS STS. ROSEBURG.

DEH. B. IRVING COUNTY SURVEYOR
Surveyed February 1946
by N. E. RICHARDSON Deputy Co. Surveyor
SCALE 1" = 40'

REGISTERED
OREGON
LAND SURVEYOR
N. E. Richardson
JULY 7, 1944
N. E. RICHARDSON
35



COUNTY SURVEYORS FILE DATA
DO NOT REMOVE FROM OFFICE