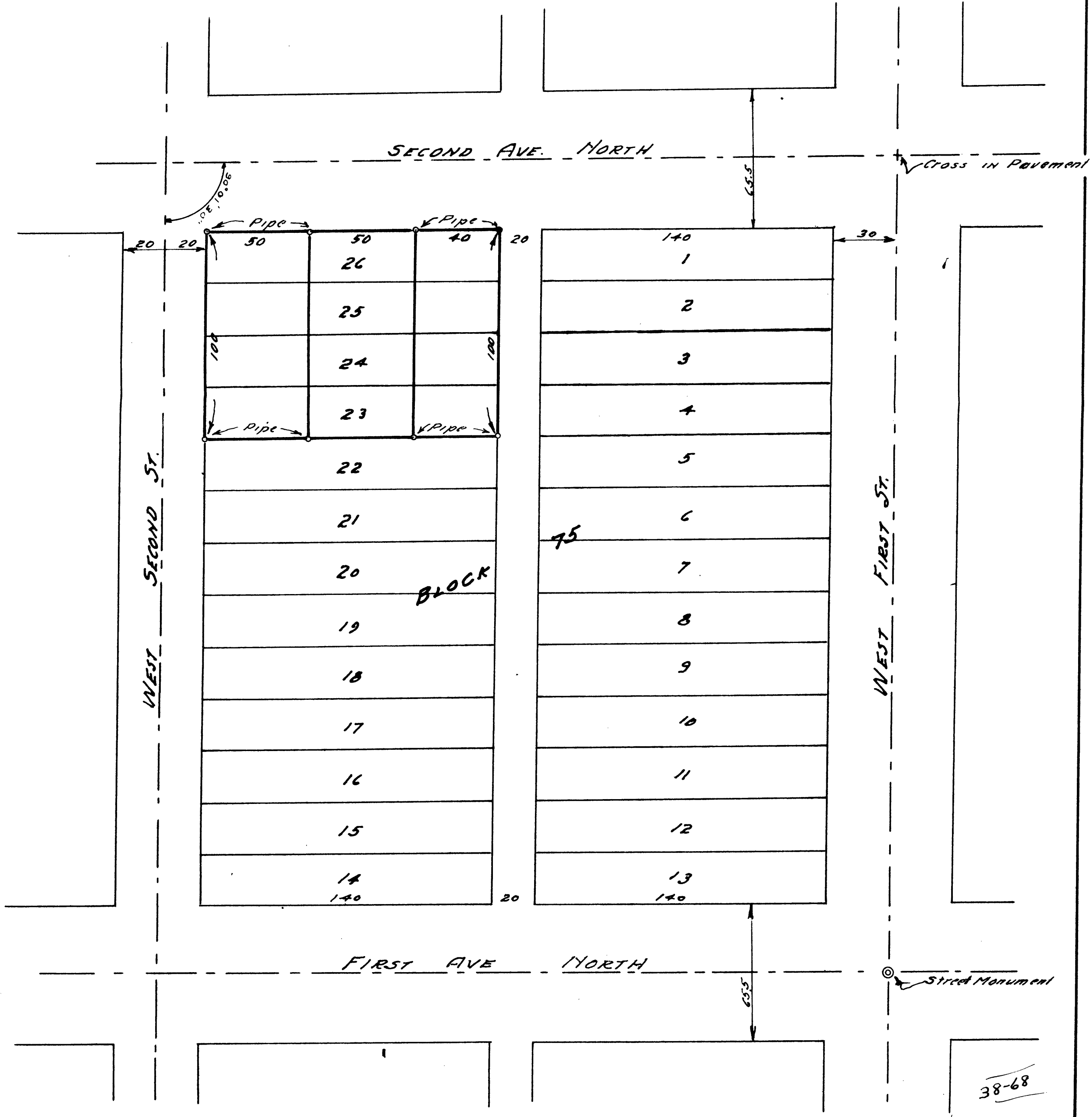
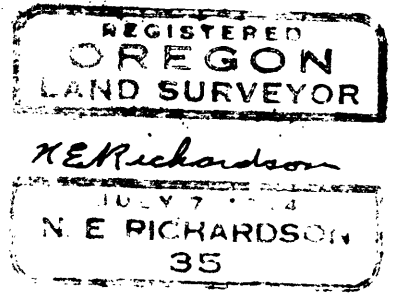


FOR ORIGINAL
SEE 118-7

COUNTY SURVEYOR'S OFFICE
DOUGLAS COUNTY OREGON

LOTS 23-24-25-26 BLOCK 75
SUBDIVISION A MINNEYS IMPROVED PLAT
ROSEBURG, OREGON.

BEN. B. IRVING COUNTY SURVEYOR
Surveyed March 5, 1945 by
N.E. RICHARDSON Deputy County Surveyor
SCALE 1" = 40'



38-68