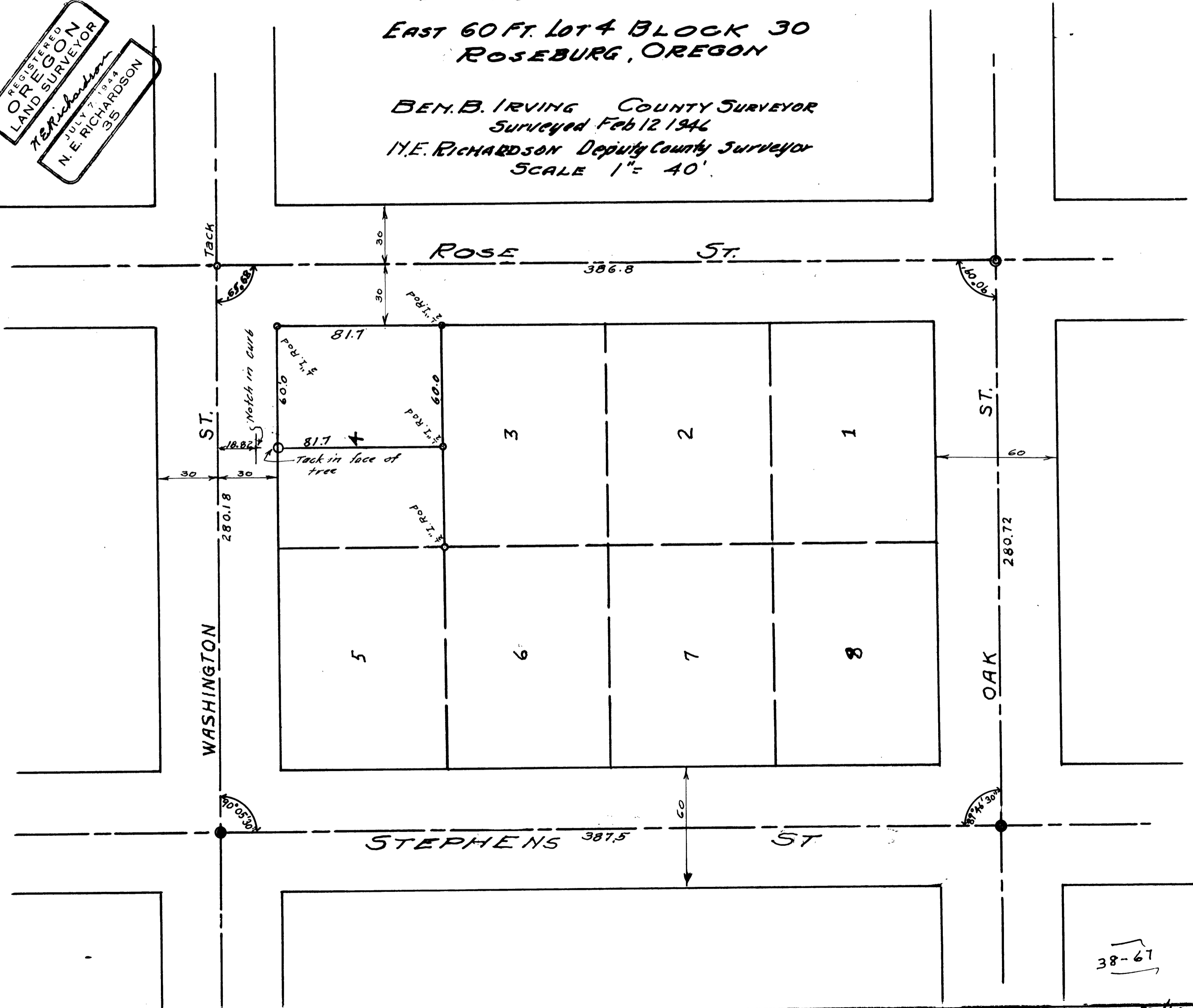
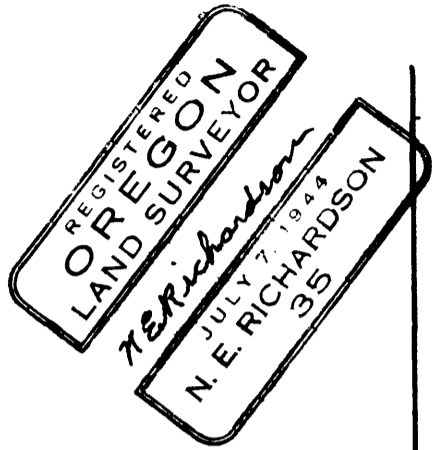


COUNTY SURVEYORS FILE DATA
DO NOT REMOVE FROM OFFICE

COUNTY SURVEYOR'S OFFICE
DOUGLAS COUNTY OREGON

EAST 60 FT. LOT 4 BLOCK 30
ROSEBURG, OREGON

BEN. B. IRVING COUNTY SURVEYOR
Surveyed Feb 12 1946
N.E. RICHARDSON Deputy County Surveyor
SCALE 1" = 40'



38-67